

CANTERBURY FESTIVAL

KENT'S INTERNATIONAL ARTS FESTIVAL

20 OCT - 3 NOV 2018



canterburyfestival.co.uk

Partner and Principal Sponsor



WELCOME

from Rosie Turner
Festival Director

Per ardua ad astra (through struggle to the stars) has been our watchword in preparing this year's star-studded Festival.

Massive thanks to our sponsors and donors – led by Canterbury Christ Church University – who have stayed loyal, increased their commitment, or joined us for the first time, proving that Canterbury needs, loves and deserves a fantastic Festival. Now you can support us by booking early, telling your friends, organising a work's night out... we need to sell more tickets than ever before and there's lots to tempt you.

From Knights and Dames to performing Socks – please look through the *entire* programme as some of our unique events defy simple classification. However, all our shows are united by being top quality, terrific fun, and right here in Canterbury. It's *your* Festival so please make the most of it.

I'll see you there!



PARTNER AND PRINCIPAL SPONSOR



Canterbury Christ Church University welcomes the opportunity to work with Canterbury Festival in 2018, for the ninth consecutive year. We are delighted to be associated with such a prestigious and popular event in the city, as both Principal Sponsor and Partner.

Canterbury Festival plays both a vital role in the city's excellent cultural programme and the UK festival calendar. It brings together the people of Canterbury, visitors, and international artists in an annual celebration of arts and culture, which contributes to a prosperous and more vibrant city. This year's Festival promises to be as ambitious and inspirational as ever, with a rich and varied programme.

The University is passionate about, and contributes significantly to, the region's creative economy. We are proud to work closely with a range of local and national cultural organisations, such as the Canterbury Festival, to collectively offer an artistically vibrant, academically inspiring and socially engaging arts and culture programme to the local community. In the autumn of 2018, we will open our new Arts Building dedicated to creative arts. Throughout the Festival, we offer a range of campus events and look forward to welcoming you.

Rama Thirunamachandran
Vice-Chancellor and Principal,
Canterbury Christ Church
University



FUNDERS



Supported by
**ARTS COUNCIL
ENGLAND**



SPONSORS



Venue Sponsor



Technical Sponsor



The official
newspaper of
2018 Canterbury
Festival



TRUSTS AND SUPPORTERS

The John Swire 1989 Charitable Trust
Peter and Beryl Stevens
Coombs (Canterbury) Ltd
Simpsons English Wine Estate
HR Pratt Boorman Family Foundation
Canterbury Festival Foundation

HEADLINE SPONSORS



CORPORATE MEMBERS

Abbott Construction
Airhedz.co.uk
Bang & Olufsen of Canterbury
BO Concept
Canterbury Christ Church University
Coombs (Canterbury) Ltd
Crowthers of Canterbury

Darwin Escapes
Furley Page
Holiday Inn Express Canterbury
Independent Music Productions
Jackson-Stops & Staff
Kent Recruitment Bureau
Lenleys

McCabe Ford Williams
PG Lemon LLP
Sennet Insurance
Tim Stubbings Photography
Whitehead Monckton
YMS Group

Contents

Festival Highlights	01
Music	02
Performance	20
Family Friendly	28
Made in Kent	31
Talks	32
Science	36
Visual Arts	38
Walks	42
Umbrella	46
Events Diary	51
Venue Details and Access	53
Big Day Out	54
Big Eat Out	55
Big Sleepover	56
Acknowledgements	57
Map & Venues	58
Booking Information	59
Booking Form	60



Canterbury Festival is proud to be a member of the British Arts Festivals Association.
artsfestivals.co.uk

Music



Friday 26 October 7.30pm

Sir Bryn Terfel

Full details on p.7

Performance



Tuesday 23 October 7.30pm

Släpstick

Full details on p.20

Talks



Friday 26 October 5.45pm

John Suchet

Full details on p.33

Circus

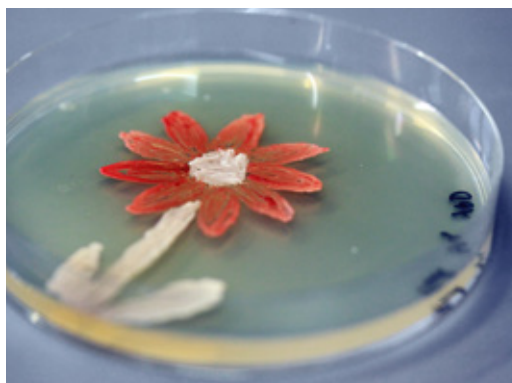


Thurs 1 - Sat 3 Nov 7pm, 7pm, 6pm

Barely Methodical Troupe

Full details on p.25

Science



Saturday 27 October 2pm

Agar Art

Full details on p.37

Family Friendly



Saturday 27 October 2pm

Children are Stinky

Full details on p.30



Image: 'Dunstan's miracle at Calne' With kind permission of the Chapter of Canterbury Cathedral

Saturday 20 October 1pm

Ave Dunstane

Canterbury Gregorian Music Society

Helen Natrass	Director	Adrian Bawtree	Organ
Ian Williams	Principal Cantor	Mark Bateson &	
Christopher Smith	Assistant Cantor	Philippa Jevons	Readers

The Canterbury Gregorian Music Society's concerts are among the Festival's most popular events. This chant from the 13th-century Worcester Antiphonal in honour of St Dunstan has been newly transcribed from the original and is unlikely to have been heard in Canterbury since the Reformation. St Dunstan (909-988) was famously gifted in the arts and music, became Archbishop of Canterbury and ended his life teaching in the school of Theodore and Hadrian in Canterbury. Here, music and readings tell his story from contemporaneous sources. The organ offers alternating verses to the psalm settings and punctuates the concert with some solos.

St. Dunstan's Church, Canterbury

Tickets £9.50



Saturday 20 October 7.30pm

European Union Chamber Orchestra

Hans-Peter Hofmann Director
Michael Collins Clarinet

Vivaldi	Concerto for Four Violins
Mozart	Clarinet Concerto
Barber	Adagio for Strings
Tchaikovsky	Serenade for Strings

'As near to perfection as it's possible to get' *Cambridge Evening News*

The European Union Chamber Orchestra consistently gives fresh, dynamic performances which benefit from the physical freedom of their playing standing up. For the Festival's Opening Concert they are joined by one of Britain's most distinguished clarinetists, Michael Collins, in a programme centred on Mozart's masterpiece – the autumnal, evocative Clarinet Concerto.

A sprightly opening with Vivaldi's Concerto for Four Violins, and the graceful romance of Tchaikovsky's Serenade for Strings complete an evening of 'virtually unalloyed delight' *International Record Review*.

Cathedral Nave

Tickets £26.25, £21.25, £19.25, £16.25

All ticket prices include a Marlowe
per-ticket booking fee of £1.25

Partner & Principal Sponsor



Sunday 21 October
3.15pm

Festival Evensong

Every year the Festival works closely with the Cathedral throughout the two week period. The Cathedral offers this special Evensong as part of the the Festival's city-wide celebrations.



Saturday 20 October 8.30pm

The Christians

On the back of a hugely successful tour last year and a new album *Sings & Strings* (out now) The Christians are back on the road and opening the Spiegeltent with a show-stopping gig. They took the British pop charts by storm in the late 1980s and early 1990s when they had seven hit singles from their multi-platinum selling debut album, *The Christians*.

Ideal World, *Born Again* and *Hooverville* were shortly followed by number one selling album *Colour*. Their version of *Harvest for the World* raised millions for Unicef. BBC Radio 2 DJ Chris Evans described The Christians' set on air in December as 'The best gig I've ever been to.' See if he's right.

Spiegeltent
Tickets £26.25

Sponsored by



Sunday 21 October 11am

Festival Chamber Orchestra

Albinoni	Oboe Concerto in D Minor.
Mozart	Eine Kleine Nachtmusik (Allegro)
Rutter	Dashing Away
Purcell	Rondeau

One of the great musical assets of the area, the Festival Chamber Orchestra earns consistently glowing reviews for its innovative programming and quality playing. Principal Oboist Ian Crowther draws from his vast experience and starry address book of top professional musicians, to create concerts to surprise and delight. A sparkling way to spend a Sunday morning... coffee anyone?

Spiegeltent
Tickets £12.25



Sunday 21 October 7.30pm

The Feeling

Twelve years after the release of their celebrated million-selling album *Twelve Stops and Home*, The Feeling are touring for the first time in over two years.

Twelve Stops and Home was originally released in 2006 and its fiercely infectious, life-affirming brand of pop, pitched somewhere between Queen, the Scissor Sisters, ELO and Supertramp, helped earn the band the Ivor Novello Award for Songwriters of the Year.

Expect to hear the big-hearted songs that became hit singles: *Sewn*, *Fill My Little World*, *Never Be Lonely*, *Rose* and *Love It When You Call*.

'Within my lifetime, people will refer to the first album by The Feeling as a masterpiece' *Caitlin Moran*

The Marlowe Theatre

Tickets £31.25, £25.25



Sunday 21 October 8pm

The Sammy Rimington International Band

Of all the 'honorary' New Orleans citizens who come from England, multi-instrumentalist Sammy Rimington is surely among the most lyrically musical. Expect to hear his graceful and highly creative brand of New Orleans trad jazz, honed after 50 years playing with Ken Colyer's Jazzmen in the 1960s and many of the jazz legends in Britain, Europe and America. Sit back and enjoy the master at work.

'Sammy Rimington's playing demonstrates the clarinet's matchless range of funky virtuosity, which makes jazz's past as real as its future' *The New York Times*

Spiegeltent

Tickets £19.25



Image © Tim Stubbings



Monday 22 October 7.30pm

Bursary Competition Final

Book early for the Festival's annual classical music competition, now in its eighth year. The competition final has launched some of Kent's finest young musicians, supporting them in their performance development with a significant bursary. It is fiercely competitive and each year the standards seem higher than ever.

The talent, technical brilliance and poise of the young players is tested as the judges have the privilege of deciding who wins the prize and the role of Festival Ambassador for the year.

St Gregory's Centre for Music

Tickets £15.25, students £8.25

Supported by



All ticket prices include a Marlowe per-ticket booking fee of £1.25

Tuesday 23 October 8.30pm

Tom Robinson

Marking 40 years since his debut album *Power In The Darkness*, expect Tom Robinson and his band to be at their incendiary best.

Known today as a broadcaster - hosting three shows a week on BBC 6 Music - Tom first made a name with his punk era hits *2-4-6-8 Motorway* and *Up Against The Wall*. A staunch advocate for Rock Against Racism and LGBT rights, his anthem *Glad To Be Gay* became a Top 20 hit (despite a ban by Radio 1). He's co-written songs with Elton John, Peter Gabriel and released 12 solo albums. With support from Lee Forsyth-Griffiths, hear his classic songs performed by a veteran artist at the top of his game.

Spiegeltent

Tickets £26.25

Sponsored by

LILFORD | GALLERY

Wednesday 24 October 7.30pm

Elégie

Rachmaninoff - A Heart in Exile

Lucy Parham

Piano

Henry Goodman

Narrator

Pianist Lucy Parham returns to the Festival with a new programme chronicling the life of composer and pianist Sergei Rachmaninoff.

The composer became an exile in 1917, and his longing for his homeland imbues his music. The narrative, scripted from letters and diaries, follows Rachmaninoff from his youth in Russia, through his self-imposed exile in 1917 and finally to California USA, where he died in 1943.

The programme includes many of his best-loved works for solo piano, including a selection of *Preludes*, *Etudes-Tableaux*, *Moments Musicaux* and the haunting *Elégie*, as well as works by Scriabin and Tchaikovsky.

Shirley Hall, The King's School

Tickets £21.25, students £13.25



Thursday 25 October 7.30pm

The Shires

The UK's most successful country music act The Shires are guaranteed to be among the hottest tickets of the Festival. The British country duo – singer-songwriters Ben Earle and Crissie Rhodes – got together in 2013 and released their debut album *Brave* in 2015, becoming the first UK country act to chart in the Top 10 of the UK Albums Chart. The group's second album, *My Universe*, became the fastest-selling UK country album in history when it was released in October 2016.

After playing a handful of shows together, The Shires were signed in the UK by Decca Records; they also secured a contract with American record label Universal Music Group Nashville, thus becoming the first-ever English country act to be signed to a major Nashville label. They were also the first UK country act to have a top ten album and the first to receive an award from the American Country Music Association. Expect an evening of ballads, up-tempo beats and a mix of pop elements running through their own brand of country.

Marlowe Theatre

Tickets £46.25, £35.25, £31.25

Sponsored by



Canterbury
Connected

BUSINESS IMPROVEMENT DISTRICT



Image © Warren Orchard

Friday 26 October 7.30pm

Sir Bryn Terfel

One of the greatest musicians of his generation, Sir Bryn Terfel's charismatic presence draws thousands to hear him sing and he is in huge demand by the world's leading opera houses. He is equally compelling in recital, communicating with audiences in the most direct and intimate way. We are delighted to present this special solo recital which is sure to be one of the standout performances of the Festival's musical history.

Accompanied on the piano by Annabel Thwaite, the programme mixes works by Schumann and Schubert with Sir Bryn's personal selection of folk and traditional songs from the four corners of the United Kingdom. A giant in reputation and voice, Sir Bryn's ability to mine drama and character even from smaller works is a rare treat for Canterbury and not to be missed.

There are a limited number of VIP tickets where the price includes a post-concert reception with Sir Bryn Terfel.

Marlowe Theatre

Tickets £101.25 (VIP), £71.25, £56.25, £46.25, £31.25

Sponsored by



Headline Sponsor

Wine generously donated by

**Simpsons English
Wine Estate**



Image © Andy Staples

Saturday 27 October 7.30pm

Rachel Podger (Violin) and VOCES8

A Guardian Angel

'Queen of the Baroque violin' (*Sunday Times*) Rachel Podger's serene and beguiling virtuosity is the angelic guiding voice amidst choral masterpieces sung by star vocal ensemble VOCES8. Designed to explore the acoustics of the Cathedral, the music alternates between the artists with VOCES8 calling to Rachel's central 'Angel' from around the space.

The programme includes beautiful solo Bach and Biber from Rachel, *The Three Kings* (a commission by Jonathan Dove), works by MacMillan, Tomkins and Gibbons and culminates in a final prayer – a new work by Owain Park – *Antiphon for the Angels*.

'The slickest of the lot... fans of a cappella ought to hear this' *CD Review BBC Radio 3*

Cathedral Nave

Tickets £26.25, £21.25, £19.25, £16.25

Sponsored by



**The John Swire
1989 Charitable
Trust**

Come and Sing with VOCES8

A workshop of fun music-making for singers of all abilities; come along and enjoy learning to sing in harmony.

Duration 60 mins

Shirley Hall, The King's School, 3.30pm

Tickets £5



Thursday 25 October 9.30pm

Mampama

Kent and London-based Mampama formed in 2015 through a love of two of the great West African popular music styles: 'palm wine' music from Sierra Leone, based around a distinctive two-finger guitar picking style, and 'highlife', the great Ghanaian fusion of traditional rhythms and jazz. For this gig the core four-piece band will be richly expanded with percussion, a brass section and some veteran guest players.

Infectious grooves, great musicianship and even a little of the history behind the songs... expect to dance!

Spiegeltent
Tickets £16.25

Sponsored by

Barretts



Friday 26 October 9.30pm

Mamas Gun

Brit soul band Mamas Gun have sparked millions of streams worldwide while their first three albums, *Routes to Riches* (2009), *The Life and Soul* (2011), and *Cheap Hotel* (2014), spawned Top 10 hits on four continents.

This summer saw the release of *Golden Days* (2018), billed as their defining masterpiece, which chronicles the band's decade-long journey to date. With shades of Stevie Wonder, Hall & Oates and a dash of Prince, get up and boogie to the Guns' smooth, funky sound.

'A blend of funk and deep soul that really gets you moving' *Earmilk*

Spiegeltent
Tickets £16.25
(see package deals p.17)



Saturday 27 October 9.30pm

Club Click

Club Click – Brighton's legendary disco, soul and funk night brings Studio 54 to the Canterbury Spiegeltent. Booty queens and hip hustlers, don your funky threads, gorgeous gowns and let your freak flag fly at our dazzling evening of sumptuous glamour, glittering divas, hot stepping fellas and dirty disco dancing.

Club Click presents Cuttin' Luce, Local Honey and Desert Ivan Discs, with special guest The Dance Floor Activist. Enter the Soul Train Boogiedown with prizes for Best Dressed and Best Dancers.

Spiegeltent
Tickets £13.25
(see package deals p.17)



We are proud to be a Headline Sponsor of the
Canterbury Festival



Development solutions in and around
Canterbury **since 1984.**



Saturday 27 October 7.30pm

Sophie Ellis-Bextor

The Brit Award nominated singer, songwriter, model and *Strictly* star, rose to fame as a vocalist on universal number 1 *Groovejet (If this Ain't Love)* – thought to be the first song ever to be played on an iPod – before embarking on a solo career.

Sophie Ellis-Bextor's ice-cool, cut-glass vocals lent a sophisticated edge to her work. Hits from the early noughties

onwards include *Young Blood*, *Take Me Home* and *Murder on the Dancefloor* – Europe's most-played song of 2002. This spring Sophie released orchestrated versions of all her hits and past single releases – we're loving the transformation from glitter-ball queen to deluxe songster.

Accompanied by a full band and string section, see Ellis-Bextor perform your favourite hits with added oomph.

The Marlowe Theatre

Tickets £46.25, £38.25, £31.25

Sponsored by

Paul Roberts

CENTREPOINT

Headline Sponsor

All ticket prices include a Marlowe per-ticket booking fee of £1.25



Sunday 28 October 7.30pm

Journey through Conflict: From Then until Now

Nicholas McCarthy Piano

Commemorating the Centenary of the end of WW1, Major General Andy Salmon (rtd) CMG OBE, leads us through a unique event, charting the experiences of servicemen & women in conflict from WW1 through to WW2, the Troubles and to recent campaigns, including Iraq and Afghanistan. This artistic performance features renowned one-handed concert pianist Nicholas McCarthy, whose performance of Left-Hand Alone repertoire arranged for injured service personnel following WW1, is fused with the artwork, voices, poetry and stories of our veterans' personal journey through conflict, injury and rehabilitation. Told with unflinching honesty, grit and humour, their courage and bravery is both uplifting and inspiring.

Shirley Hall, The King's School
Tickets £21.25, students £13.25

All ticket prices include a Marlowe per-ticket booking fee of £1.25

Sunday 28 October 8pm

The Good Gnus

Enjoy some novel zoology with Flanders and Swann's tales of warthogs and gnus, muse on horticulture with a sad story of the honeysuckle and the bindweed, or ponder transport on a slow train or a London bus. Add to this clever and droll songs by Noël Coward, Skellern and Stilgoe and the wonderfully sharp Tom Lehrer and you have a perfect evening's entertainment.

Spiegeltent
Tickets £17.25

Sponsored by

Coombs
THE CONSTRUCTIVE ANSWER

Tuesday 30 October 8pm

Embraceable Ella

In this celebration of her vocal heroine, Joanna Eden and the Chris Ingham Trio explore Ella Fitzgerald's repertoire, from the throw-away *A Tisket A Tasket* to timeless classics by Gershwin, Porter, Ellington and many more.

Joanna grew up with Ella on the record player thanks to her jazz bass-playing father. She describes Ella's voice as 'a warm, familiar hug from my childhood... it's like Ella was one of the family'.

Joanna Eden's ability to combine jazz vocal dexterity with heartfelt emotion and great storytelling gives her the skills to pay a fitting tribute to the legendary artist.

'The UK's answer to Diana Krall and Norah Jones'
Time Out

Spiegeltent
Tickets £18.25

Sponsored by

TARVOS
WEALTH



Sunday 28 October 11am

Fourtouna

Brought together by their love for the music of their homelands and a fascination with world music, two instrumentalists combine the gypsy musical traditions of Europe and world music, including Greek Rebetiko, Argentinian tango and Jazz.

Another great start to a Sunday morning with lively original compositions and traditional music from all corners of the Earth.

Spiegeltent

Tickets £12.25



Monday 29 October 7.30pm

Melvyn Tan (Piano)

Schubert	Sonata in G major D894 Op78
Beethoven	Sonata No.31 in A♭ major Op110
Beethoven	Sonata No.32 in C minor Op111

Exploration, insight and imagination are vital ingredients in Melvyn Tan's blend of artistic attributes. He established his international reputation in the 1980s with pioneering performances on the fortepiano and he applies lessons learned from pianos of the past to conjure subtle new colours and details of articulation from the modern concert instrument.

Singapore-born, he marked his 60th birthday in 2016 with a UK tour with the Bruckner Orchester Linz, a Wigmore birthday broadcast on BBC Radio 3, tours to Singapore, Hong Kong and Australia and the release of a CD of Beethoven, Czerny and Liszt – *Master and Pupil*. This evening's programme – comprising Beethoven's farewell to the piano sonata – raises daunting technical and interpretive challenges that Tan is fully equipped to embrace.

Shirley Hall, The King's School

Tickets £21.25



Image © Marco Borggreve

Tuesday 30 October 7.30pm

The King's Singers: Gold

In 1968 six choral scholars from Cambridge founded a singing group and accidentally started a phenomenon. Two counter tenors, a tenor, two baritones and a bass – the line-up remains while the faces have been refreshed. Fifty years on, it's hard to think of a group whose music-making has aged so well – with joy and eclecticism defining their material, and vocal sheen and glorious harmonies setting new benchmarks in a cappella singing. This evening's programme, *Gold*, spans music from the Renaissance to the Beatles proving that first-class musicianship never goes out of fashion.

'The Golden Anniversary (50th!) of the a cappella group, the King's Singers, was marked by a concert at Carnegie Hall this weekend, and it would have been momentous if it had simply marked that milestone; it was, however much more than a milestone, and it re-affirmed this ensemble's continued stature among the preeminent ensembles of the world.' *NY Concert Review Inc, USA April 2018*

'The superlative vocal sextet' *The Times*

Shirley Hall, The King's School

Tickets £26.25

Sponsored by



Image © Paul Micheal Hughes

Wednesday 31 October 8.30pm

Jamie Smith's MABON (Wales)

Singular music that's toe-tappingly good – Jamie Smith's MABON is a blend of world music and Celtic roots that combines traditional instruments with a modern rhythm section. The band performs outstanding original compositions – both instrumental and vocal – mostly written and composed by this five piece band of dazzling musicians.

Expect the driving rhythms of jigs, groove-fuelled reels, sing-along epics, haunting Welsh-language love-songs – all are given the same passionate treatment.

'A fearsome reputation as a live band... stratospheric' *Financial Times*

'If music could fuel engines, MABON could solve the energy crisis' *Songlines*

Spiegeltent

Tickets £16.25

Thursday 1 November 7.30pm

Close to You

Shirley Hall, The King's School
Tickets £21.25 (£16.25)

Sponsored by



Venue Sponsor

Inspired by Frank Sinatra's legendary collaboration with the Hollywood String Quartet, *Close to You* features a unique group of handpicked musicians chosen for their sound and empathy for this extraordinary music.

Celebrated vocalist Matt Ford – one of the greatest Big Band singers in the UK – has appeared regularly with the John Wilson Orchestra, the Halle, Philharmonia and the BBC Big Band. In this special concert Matt joins the internationally-acclaimed Tippett Quartet, trombonist and arranger Callum Au and a piano quintet led by project

director Matt Skelton to perform some of the best-known popular songs of the 20th Century. Savour a finely-balanced evening of lush ballad settings and elegant swinging arrangements in celebration of the art of song.

'Having been lucky enough to know Sinatra, Nelson Riddle and Eleanor Slatkin (the original cellist of the Hollywood String Quartet), I am certain they would have been as thrilled as I am with these loving and fresh restorations of their work. Bravo!'

Michael Feinstein



Friday 2 November 7.30pm

Trio HLK & Evelyn Glennie

'One of the most exciting young ensembles to have emerged in the last year' *BBC Jazz*

Legendary Scottish percussionist Dame Evelyn Glennie has been profoundly deaf since the age of 12 and taught herself to hear with parts of her body other than her ears. She describes her recent collaboration with Trio HLK as 'a venture out of my comfort zone' and it may be that this concert is unlike anything you've heard before.

With Rich Harrold on piano, Ant Law on guitar and Richard Kass on drums, Trio HLK recorded its first album last year with Dame Evelyn on vibraphone and marimba, and Steve Lehman on sax.

Their music subtly develops from jazz standards into rhythmically intricate compositions and complex frameworks for improvisations, leading the listener into unknown territory by a familiar thread. At times challenging, at others mesmeric, described as 'elegant, dizzying, serene' (*London Jazz Review*) – this will be the concert that everyone will be talking about. Book early.

Colyer-Fergusson Hall
Tickets £21.25 (£16.25)

Sponsored by





Saturday 3 November 7.30pm

Hymn of Praise

Canterbury Choral Society and London Mozart Players

Rebecca Lea	Soprano
Madeleine Shaw	Mezzo soprano
Peter Auty	Tenor
Richard Cooke	Conductor

Saturday's concert in the Cathedral closes the Festival with a romantic flourish. Brahms' choral writing was centred on his *German Requiem*, but there are shorter works of similar quality, two of which – *The Alto Rhapsody* for alto solo, men's choir and orchestra, and the *Song of Destiny*, will be performed by the choir and orchestra in the first half of the concert.

Mendelssohn's Symphony No. 2, *Lobgesang*, better known as *Hymn of Praise*, follows. A favourite of the choral repertoire ever since it was written in 1840, it has a similar structure to Beethoven's 9th with three orchestral movements preceding the grand, extended choral finale. *Hymn of Praise* ends with a burst of uplifting energy and fiery choruses, offset by enchantingly lyrical orchestral writing and solos arias.

Cathedral Nave
 Tickets £31.25, £26.25, £19.25, £13.25

All ticket prices include a Marlowe per-ticket booking fee of £1.25

Sponsored by



Festival Friends



Saturday 3 November 8.30pm

YolanDa Brown

Award winning YolanDa Brown is the premier female saxophonist in the UK. Her music is a delicious fusion of Reggae, Jazz and Soul. YolanDa has toured with The Temptations, Diana Krall, Billy Ocean and as part of Jools Holland's Rhythm & Blues Orchestra.

A broadcaster, YolanDa is a presenter on BBC Radio 4 *Loose Ends* with Clive Anderson and for BBC 4 at the Proms.

A real renaissance woman, set to reach new heights.

Spiegeltent
 Tickets £21.25

Sponsored by



Followed by Closing Party!

Say goodbye to the 2018 Festival and dance to some seriously funky tunes by DJ Mikey Martinez.

Spiegeltent, 10.45pm
 Tickets £10

Daytime Concerts in the Spiegeltent



Image © Peter Cook

Schools Concert Series

Come and support the musicians of the future as they make their debut on the Spiegeltent stage. All school concerts are FREE.

Sponsored by



Tuesday 30 October 1pm

Kent College

Ensemble and solo items performed by Kent College's musicians, including the Lower School Choir, 'Cantabile'.

Wednesday 31 October 1pm

Simon Langton

Current sixth-form students perform a range of music including popular songs, hits from the musicals, jazz and classical music.

Thursday 1 November 1pm

Canterbury Academy

Students of all ages will perform a range of classical, popular and musical theatre songs and pieces, led by their elite sixth form programmes.

Friday 2 November 1pm

Canterbury College

Music and Performing Arts students from Canterbury College will be playing, singing, dancing and acting a selection of popular repertoire and extracts.

Saturday 3 November 10.30am

Play Music Primary Showcase!

Are you ready to Rock! Talented children from primary schools across Kent come together to perform Classic rock hits as well as a few more recent pop favourites. Expect guitar solos, powerful vocals and crashing cymbals. Featuring children from Herne Bay Junior School, Phoenix Community Primary School, Bridge and Patricbourne C of E Primary among others.



Image © Peter Cook

Salon Perdu is back!

With the help of Canterbury City Council, we have found a new site for the *Salon Perdu* in the Coach Park at St John's. See our map on p.58 for the new location and the nearest car parks.

Please note: there is no parking on the Spiegeltent site.

The Ballroom team will be on hand to serve you at both bars and there will be food stalls, including That's Amore Pizza. Why not enjoy a bite to eat and a drink on the Spiegeltent forecourt pre or post show?

Or make a night of it with our Spiegeltent packages – see two shows for a special discounted rate:

Friday 26 October

Le Gateau Chocolat (p.22) & **Mamas Gun** (p.08) - £31.25

Saturday 27 October

Etienne and Friends (p.23) & **Club Click** (p.08) - £26.25

Thursday 1 & Friday 2 November

Lady Luck Cabaret (p.26) & **Shift** (p.25) - £33.25

See you there!



Free entry, 1.10pm, St Gregory's Centre for Music, Canterbury, unless otherwise stated.

Lunchtime concerts

brought to you by
Canterbury Christ Church
University

Partner & Principal Sponsor



Monday 22 October

Automatronic: New Music for Organ and Electronics

An immersive concert of music for organ and electronics, performed by members of the collective Automatronic (Huw Morgan, Michael Bonaventure, Lauren Redhead and Alistair Zaldua). Please note this will take place in University Chapel, Anselm Building.

Tuesday 23 October

The Lunaire Quartet

Stelios Chatziiosifidis (violin)
Julian Latham (viola)
Mackenzie Richards (violin)
Steve Collisson (cello)

M. Ravel, String Quartet in F major
D. Shostakovich String Quartet No.3 in F major, Op.73

The superb string quartet plays music by two iconic 20th century composers. Ravel's dreamlike atmosphere contrasts with Shostakovich's much darker tone, coloured by the cataclysmic events of World War Two and the rise of Stalin.

Children aged five and over are welcome to attend the performances, when accompanied by a responsible adult.

Wednesday 24 October

David Knotts (piano)
Sam Corkin (saxophone)
C. Debussy, *Rhapsodie*
E. Schulhoff, *Hot-Sonate*
J. Carmichael, *Latin American Dances*
Get your dancing shoes on! From Debussy's sultry and languorous *Rhapsodie* – inspired by Spanish and Arabic dances – to Schulhoff's dazzling Jazz-inspired *Hot Sonata*, this superb duo returns with a delightful programme guaranteed to get your toes tapping.

Thursday 25 October

Kentish Piano Trio

Helen Crayford (piano)
Kathy Shave (violin)
Julia Vohralik (cello)
with guest performer Stelios Chatziiosifidis (viola)
G. Mahler, Piano Quartet in A minor
G. Fauré, Piano Quartet no 1 in C minor, Op.15

An intriguing programme, juxtaposing two romantic masterpieces. Mahler's youthful work, his only piano quartet, bears the hallmarks of the great future symphonist. The Fauré is also an early piece, but just as passionate and exciting as his later works.

Friday 26 October

CONTACT (Dir. Matt Wright)

As our Creative Music Technology, Commercial Music and Music Production students begin a new era of study in an impressive new building on the Canterbury campus, we present new music, sound and visuals by staff and students in this first concert by the newly-formed ensemble that unites classical, contemporary and electronic musical traditions.

Please note this will take place in Anselm Studio 1.

Monday 29 October

Canterbury Festival Maxwell Davies Memorial Prize

Martin Outram (viola) | Heledd Wright (flute)
Sam Corkin (sax) | David Knotts (piano)
A showcase of student competitions, performed by professional instrumentalists, that will culminate in the awarding of the Canterbury Festival Composers' Competition prize, named in honour of the University's long creative association with Sir Peter Maxwell Davies, who died in 2016.

Tuesday 30 October

Trio 'Manor Manouche'

Nevil Willis & Thomas Abrahams (guitars)
Jarrod Coombes (double bass)
Spend a laid-back lunch hour in the electrifying company of the acoustic trio that plays gypsy swing in the style of the great Django Reinhardt. Not to be missed!

Wednesday 31 October

University String Orchestra

(Dir. Martin Outram)

Top Voices (Dir. Chris Price)

A selection-box of truffles from two of the University's finest ensembles. All-female choir Top Voices will time-travel from Hildegard of Bingen to Billy Joel, while the String Orchestra is set to perform a Baroque masterpiece. The concert will culminate with all forces combined in a choral work.

Thursday 1 November

Christ Church University Big Band

(Dir. Steve Waterman)

The University's accomplished Big Band raises the roof with classic jazz repertoire from Oliver Nelson, Benny Golson, Henry Mancini, Dizzy Gillespie and many more.

Friday 2 November

Dance@Canterbury: RE-MIX

Students studying Dance at Canterbury Christ Church University perform a selection of their choreography, including sequences that combine digital media and film. Please note this will take place in Anselm Studio 1.

Brewers

DECORATOR CENTRES

Brewers Decorator Centres bringing colour to Canterbury for over 50 years

We're proud to support
the Canterbury Festival 2018

All the paint and wallpaper brands under one roof

OVER 160 STORES NATIONWIDE

Visit our Canterbury store at:
Wincheap Industrial Estate,
Maynard Road, Canterbury CT1 3RJ
01227 863800

Other stores locally at:
Ashford, Folkestone, Margate, Sittingbourne
www.brewers.co.uk



20% OFF

When you present this
programme in any
participating store*



Voucher valid from 1st July – 31st December 2018 at *Brewers Canterbury, Ashford, Folkestone, Margate, Sittingbourne. The value of this voucher includes VAT. It cannot be exchanged for cash (cash equivalent value £0.001) and no refund will be given. Vouchers cannot be used in conjunction with account facilities or with any other offer/discount. The offer is strictly one per household. Multiple copies and/or photocopies will not be accepted. **Brewers staff:** Sign as redeemed and process as per company systems 2.6. Product code: ZX520HOME



Sunday 21 October 3pm

Goldfield Productions presents

Hansel & Gretel

We are delighted to present *Hansel & Gretel* – a 60-minute work for five musicians, a narrator and two puppeteers. Chamber music, shadow-play and animation combine in a grown-up version of an old tale. Against a dark, witty and twisted fairy-tale landscape, contemporary themes of greed and home-coming are explored during a helter-skelter journey and feasts of sugar.

The words of poet Simon Armitage's extended lyrical poem entwine with chamber music by composer Matthew Kaner, one of the most original voices of his generation. With shadowplay and puppetry by Clive Hicks-Jenkins, *Hansel & Gretel* presents an evocative collection of art-forms, drawing audiences into a mysterious yet curiously familiar landscape.

[Suitable 12 +]

Colyer-Fergusson Hall
Tickets £15.50, students £7

In partnership with the
University of Kent
Music Department

University of
Kent

Sponsored by
**The John Swire 1989
Charitable Trust**



Tuesday 23 October 7.30pm

Wereldband presents

Släpstick

Flying violins! Speed-skating ballet dancers! Släpstick tips a nostalgic wink to comedians such as Charlie Chaplin, the Marx Brothers and Spike Jones through a spectacular collection of musical comedy turns. Rooted in music hall tradition but with a modern twist, this Dutch five-piece band are multi-talented musicians and riotous knock-about clowns. Släpstick won *Spirit of the Fringe Award* at last year's Edinburgh Fringe and it's impossible to imagine anyone leaving the theatre without a smile on their face.

Suitable for kids, big kids and those in need of cheering up... *Släpstick* promises laughs, gasps or your money back.

'Music hall style at a ridiculously high level' ***** *NRC*

Marlowe Theatre
Tickets £23.25, children £13.25

All ticket prices include a Marlowe per-ticket booking fee of £1.25



Saturday 20 October 7.30pm

Brother Wolf presents

Magic Circle

In a room in Calme Manor, blooded by an appalling ritual, a protective chalk circle has been drawn. Inside sits Professor Harry Cutley, seemingly intent on undoing a spell cast by a former pupil. Outside stands Inspector Nicholas Gammell, Nicker of the Yard, a rational detective with an unsolved case on his books and a suspect in his sights. Tonight, both men will seek answers to mysteries vast and colossal...

This sinister two-handed mystery drama is guaranteed to have you on the edge of your seats.

'Some of the best acting I've seen on stage... truly epic'
UK Theatre Network

[Suitable 12+]

St Mary's Hall Studio Theatre

Tickets £16.25

Sunday 21 October 2.30pm

Festival Ceilidh

The ultimate fun event for all ages, let your hair down at the Festival Ceilidh, which this year features Reel Jam – a collective of Kent musicians led by caller Sue Hudson.

You will be guided through a range of barn dances – so definitely no experience required – set to the foot-stomping fiddles of Graham Knibbs and Krista Bubble, with Sue Hudson on concertina, the driving rhythms of guitarist Jim Bryden and bass-player Mike Peters.

Songs between dances feature powerful voices and excellent harmonies and give you a chance to get your breath back. Bring your comfy shoes – you won't want to sit down!

Spiegelent

Tickets £11.25 (Group of 4 £36.25)

Sponsored by



Wednesday 24 October 7.30pm

The Slightly Fat Show

Thrill suppliers Slightly Fat Features return to the Festival stuffed to the seams with the best of their staggering stunts, lots of laughs and orchestrated mayhem to dazzle and delight.

Direct from *Sunday Night at the London Palladium*, *Just for Laughs*, The Edinburgh Fringe and the West End, they have riotous comedy, live music, circus tricks, incredible illusions and plenty of surprises in store.

A night of variety suitable for the whole family, it is best described as 'Cirque du Soleil meets Monty Python'.

Variety is back and it's Slightly Fat.

'Inspired silliness... a perfect pick me up'
**** *The Times*

Spiegelent

Tickets £19.25, children £11.25

Sponsored by





Image © Linda Nylin

Wednesday 24 Oct 8pm

Nick Coleman in conversation

How a great singer can change your life

Join Nick Coleman, one of Britain's foremost music critics (*Time Out*, *Independent*), as he examines how the human voice affects our emotions. This evening, in conversation with writer and journalist Fiona Sturges, he explores what singing means and how it works. Why is the singing of others so essential to human life? Why do we love it so?

Along the way he asks why Jagger and Lennon sing like that (and not like this), who Joni Mitchell thinks she is, and what did Aretha Franklin do to deserve the title 'Queen of Soul'? Prepare to be entertained with plenty of examples of some of the finest pop, rock and soul voices.

Cathedral Lodge
Tickets £11.50



Thursday 25 October 7pm

Scottish Falsetto Sock
Puppet Theatre

Superheroes

Sock! Pow! Wham! The award-winning Socks are back with their 10th new show of songs, sketches, socks and violence.

In *Superheroes*, the Scottish Falsetto Socks tackle all the comic book greats from Superman to Spider-Man, The Avengers to The Fantastic Four. This time they're real live *Superheroes*! You think you've seen heroes in tights before? This pair will run and run.

'Had every single audience member... laughing until they cried'
***** *Edinburgh Evening News*

[Suitable 12+]

Spiegeltent
Tickets £13.25

Sponsored by

Barretts



Thursday 25 October 8pm

Adam Kay: This is Going to Hurt

Ninety-seven-hour weeks, life and death decisions, a constant tsunami of bodily fluids – and the hospital parking meter earns more than you. Welcome to the life of a junior doctor. Scribbled in secret after endless days, sleepless nights and missed weekends, Adam Kay's diaries provide a no-holds-barred account of his time on the NHS front line.

Hilarious, horrifying and heartbreaking, this is everything you wanted to know – and more than a few things you didn't – about life on and off the hospital ward.

'Painfully funny.' *Stephen Fry*

Cathedral Lodge
Tickets £11.50

Science
Event



Image © Eli Schmidt

Friday 26 October 7pm

Le Gateau Chocolat

Raw Cacao

The opera-occasional, black-bearded, drag-diva Le Gateau Chocolat returns to the Spiegeltent with his newest treat, *Raw Cacao*.

A specially curated cycle of songs sees the six-inch heeled, six-and-a-half foot tall, wig-clad wonder at his best. Le Gateau Chocolat swings from disco to opera, musicals to pop, barely pausing for breath as he lets rip in his bewitching baritone.

This once petit pain-au-choc turned international cabaret superstar promises to drag audiences kicking and clapping through the songs that have shaped him.

Spiegeltent
Tickets £17.25
(see package deals p.17)

Sponsored by

Artful
Logistics.com
MOVING FINE ART



Friday 26 October 7.30pm

Dyad Productions presents

The Time Machine

If civilisation falls today, what will become of us? In producer Rebecca Vaughan and writer/director Elton Townend Jones' new and radical interpretation of the HG Wells classic, a Victorian time-traveller crosses the ages from 1900 to our own far future – from the fall of man to the end of the world – discovering the fate of our endeavours and uncovering our darkest fears. Can we change the future? Or has the end already begun? A philosophical journey, a nightmare adventure, a cautionary tale – this is the story of us all.

'Terrific... grips the imagination... ideas spit off the narrative like sparks from a welder's torch'
Quentin Letts, *Daily Mail*

'Brilliant... captivates and amazes'
British Theatre Guide

St Mary's Hall Studio Theatre

Tickets £16.25



Saturday 27 October 7pm

Etienne and Friends

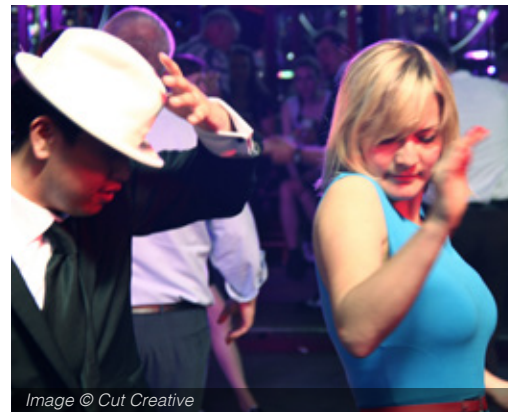
He has tricked everyone from The Queen and Prince Charles to David Cameron, Johnny Depp and Sir Bruce Forsyth – so be prepared to be amazed by the Festival's favourite magician and super-charming Frenchman, Etienne Pradier, who can find a card faster than you can say Harry Houdini. Etienne will perform his classic magic show with his great friend and colleague Nicolas Clement plus a special mystery guest.

Charismatic, creative and immensely entertaining, Etienne and Friends are not only very funny, but are also among the slickest magicians around.

Spiegeltent

Tickets £15.25

(see package deals p.17)



Sunday 28 October 2.30pm

The Ragroof Players

South American Way

Channel the spirit of Carmen Miranda and Don Ameche dancing away the afternoon to vintage Latin classics. Join the legendary Ragroof Players in rumba, mambo, samba and more. Featuring a DJ for discerning dancers, fabulous dance displays, and their trademark Instant Dance Classes, everyone gets the chance to trip the light fantastic. All welcome, experienced dancers and absolute beginners alike. No dance partner needed!

Spiegeltent

Tickets £16.25

Sponsored by

THE media
COACH

All ticket prices include a Marlowe per-ticket booking fee of £1.25



Monday 29 October 7.30pm

Flying Bridge Theatre Company presents
A Regular Little Houdini

A dockworker's son, smitten by escapologist Harry Houdini, dreams of a life of magic. His parents struggle with their son's eccentricity, but he doggedly trains himself to emulate his hero. His relentless ambition finally brings him face-to-face with the world's greatest showman – and one of the most terrifying events in British industrial history.

Directed by Josh Richards and an Edinburgh sell-out, this multi-award-winning modern fairy-tale set in Edwardian South Wales is an enchanting story that blends childhood imagination with the cynicism of adulthood in a tale of hope, determination and magic.

'A cracker!' *Western Mail*

'Spellbinding' *San Diego Union Tribune*

St Mary's Hall Studio Theatre
 Tickets £16.25

Monday 29 October 8pm

Robin Ince

A comedian's take on what makes us human

As a connoisseur of comedy and co-presenter with Professor Brian Cox of the BBC Radio 4 show *The Infinite Monkey Cage*, Robin Ince has spent decades mining our eccentricities. Here he asks some of the big questions in life: Why do we make the choices we do in life, where does anxiety come from, are we more than our brains... promising an hilarious and often profound insight into the mind.

'One of the UK's most accomplished, versatile comedians' *The Guardian*

Cathedral Lodge
 Tickets £11.50

Science
 Event

Wednesday 31 October 7.30pm

**Michael Pennington:
 Sweet William**

Actor Michael Pennington guides his audience through Shakespeare's life and plays with a mix of his own opinions and performances of many well-known and less familiar speeches. The show has been applauded worldwide for its warmth, humour and deep knowledge of its subject. Michael Pennington has played many of the great classical roles, most recently King Lear in New York and on tour in the UK. Other theatre work includes the title roles in *Hamlet*, *Timon of Athens*, *Coriolanus*, *Macbeth*, *Richard II*, and *Henry V*.

'The incomparable Michael Pennington has done Sweet William proud' *Daily Mail*

'In his brilliant one-man show Michael Pennington combines his performance skills with textual scholarship to give us as well-rounded a portrait of Shakespeare as you could hope for' *The Guardian*

St Mary's Hall Studio Theatre
 Tickets £16.25

Thursday 1 - Saturday 3 November 7pm, 7pm, 6pm

Barely Methodical Troupe

Shift

Enter a shifting, gravity-defying space where acrobats push against the edges of reality, stretching, challenging and testing the limits of collective physical endeavour.

Watch them fly, tumble and spin in moments of breath-taking acrobatics and performance. When you leave you will ask yourself if what you've seen was possible...

The UK's ground-breaking circus company Barely Methodical Troupe combine their trademark mix of exceptional physical prowess and punchy humour, with a brand new show that features artists from Spain, Switzerland and Sweden.

'Daring, beautiful, breathtaking'
**** *whatsonstage*

.....
Spielgeltent

Tickets £18.25, students £13.75

(see package deals p.17)

Sponsored by



Bode
CANTERBURY

Commissioned by Norfolk & Norwich Festival;
co-produced by Norfolk & Norwich Festival and DREAM

Image © Chris Nash





Wednesday 31 October 7.30pm

Off The Kerb Productions presents

Simon Evans: Genius

Ever since he was a boy, all Simon Evans really wanted was to be recognised by the world as a man of genius. He has, until now, remained thwarted. The world seems increasingly indifferent to true genius of any kind, let alone his.

In turn, Evans seems blissfully indifferent to conformity – political or otherwise. Speaking in enhanced BBC Received Pronunciation and inhabiting the persona of a man slightly out of touch, he magnificently skewers politicians, couch potatoes, in fact everything that is wrong with society.

A formidably funny show of fantastic intellect.

'Super-sharp wit' *Time Out*.

'A masterclass in socio-political comedy... The show is called Genius. It comes very close' ***** *The Scotsman*

'Reliably funny and refreshingly intelligent' **** *The Times*

Shirley Hall, The King's School

Tickets £17.25

Sponsored by



HazleMcCormackYoung LLP/
Chartered Architects/



Thursday 1 – Friday 2 November 9.30pm

Lady Luck Cabaret

For two nights only Las Vegas showgirl, Hollywood diva and Betty Ford alumna Peggy Sued will be transforming the Spiegel tent into the Lady Luck Casino, Bar & Grill, ably assisted by celebrity pianist to the stars, Gliberace.

After last year's sell out sensation, Abigail Collins returns with trusty sidekick Neil Kelso and a brand new line up of music, circus, magic and comedy. Colombian aerial artist Felipe Reyes will leave you breathless, while international burlesque sensation Ruby Deshabillé is sure to have a similar effect for quite different reasons. They'll be joined by a special top flight mystery guest from Peggy's Lucky Dip plus audience prizes if the roulette ball lands on YOU.

But don't worry this show is no crapshoot, everyone's a winner in this all-thriller-no-filler extravaganza. So bring your best poker face, get ready to roll the dice and ask yourself, do you feel lucky? Well do ya?!

And remember, what happens in the Spiegel tent, stays in the Spiegel tent...

Spiegel tent

Tickets £17.25

(see package deals p.17)

Sponsored by



The
London
Women's
Clinic
Kent

All ticket prices include a Marlowe per-ticket booking fee of £1.25



Friday 2 November 7.30pm

HiLow Productions partnered by Beacon Arts Centre, Greenock present

Shackleton's Carpenter

Harry McNish, a brilliant carpenter and shipwright, was the only man ever to rebel against Sir Ernest Shackleton when the *Endurance* was destroyed in Antarctica. Nevertheless, McNish skilfully modified the small boat, the *James Caird*, that allowed Shackleton and five men (including McNish) to make a voyage of hundreds of miles to fetch help for the rest of the crew – playing a vital role in ensuring all 28 were saved.

Now alone and destitute, he challenges Shackleton one last time. In his fevered mind he relives the *Endurance* expedition, pitting himself against Shackleton and plagued by the ghosts of his past.

St Mary's Hall Studio Theatre

Tickets £16.25



Saturday 3 November 7.30pm

Off The Kerb Productions presents

Seann Walsh: After This One, I'm Going Home

Edinburgh Comedy Award nominee and self-dubbed 'Lie-in King', Seann Walsh is 'unquestionably the best observational comic of his generation' (*The Guardian*).

Returning from his run in America, where he made his USA television debut appearance on *Conan*, Seann Walsh is back on tour in the UK.

This disheveled, fiery, animated, fiercely idle millennial manchild is one of the best comedians to have come out of the UK.

'A cracking good show' *The Telegraph*

Shirley Hall, The King's School

Tickets £17.25

Sponsored by



Family Friendly Events

All events taking place at the Spiegel tent are very relaxed with a well-lit auditorium, flexible seating, buggy park area, and plenty of space for smaller siblings to crawl and toddle.

Ticketed shows last 1 hour, unless otherwise specified. Under 1s go free.

Family programme sponsored by



12pm-1pm

Festival Parade

Bursting with colour and sound, the Opening Day Parade will be taking to the city centre. Join in, follow or watch the uplifting parade along the High Street and into Whitefriars led by the Dutch band, Helmonds Muziek Corps.



11am

Canterbury Throwdown

Experienced potters are on hand to help you make a pot. Come along and have a go and take your wonderful unfired creations home. See canterburyfestival.co.uk for details.

1pm-4pm

Airhedz

Airhedz will be performing a selection of eye watering aerial skills from their rig in Whitefriars as well as running taster sessions.

Whitefriars

2pm-4pm

Anifest

Join staff and students from Canterbury Christ Church University to create a background and characters which will feature in a short stop motion animation. A selection of films made during the workshop will be shown during Canterbury Anifest, which is back in Spring 2019.



Hospitality Tent, The Spiegel tent

11am-4pm

Canterbury College

Head over to Canterbury College's on-site Gallery and enjoy a selection of students' work from across the visual arts courses.

1pm-5pm

Track Record Stage

Live music from Track Record applicants past and present and other local acts. An eclectic mix guaranteed to entertain.

High Street

Canterbury Through My Eyes

Community Photo Exhibition

Take an inspiring photo that shows what Canterbury means to you, post your photo on Instagram and hashtag #canterburyfestcomp by Monday 17 September. Winner's images will be displayed along The King's Mile (thekingsmile.org.uk) during the Festival and receive a prize. See canterburyfestival.co.uk for more details.

Sponsored by



Arts Award: Discovery Hub

Arts Award is a national qualification offering children and young people the chance to experience the arts, develop as an artist or arts leader.

Children and young people aged 5+ attending the Family Friendly shows can take part in free post-show workshops with performers and our Arts Award advisor.

Please book your free workshop space at the same time as booking events that show this Arts Award logo.





Image © James Bellorini



Saturday 20 October 2pm

Baby Loves Disco

We just can't stop the party – the original family dance event is back! Baby Loves Disco is one of the Festival's hottest tickets, so book early to avoid disappointment.

All family members are welcome, with guaranteed fun for babies, toddlers, young children, parents and grandparents alike. There will be face-painting and dressing up for the tinies, with prizes for the best outfits and a licenced bar for the grown-ups. Boogie on down for two hours of Festival fun.

[Suitable for all ages]

Spiegeltent
Tickets £8

All ticket prices include a Marlowe per-ticket booking fee of £1.25

Tuesday 23 October 2pm

Ensonglopedia of Animals

An animal song for each letter of the alphabet! Get to grips with fascinating facts about extraordinary echinoderms, distressed damselflies, crazy corals, batty birds and amazing arachnids. Expect the unexpected. And expect it to rhyme.

This is the brand-new show from John Hinton, creator of the 'Sciencrilogy' of musical comedies about Darwin, Einstein and Curie. You'll even get a free pencil!

A free songwriting workshop follows the performance, suited to children 7+, though younger siblings are welcome. Booking required.

[Suitable for ages 5 to 105]

Spiegeltent
Tickets £8



Science
Event

Wednesday 24 Oct 2pm

Actlab presents

Sound Hunt

We are about to begin a very, very big adventure!

Join Bob on a quest to create music, discover and collect sounds during this magical, interactive and sensory journey.

ActLab return to the Festival for a fourth year with an intimate experience for children and young people with learning difficulties* and their families.

An immersive show incorporating sensory pathways to connect with participants.

*Profound and Multiple Learning Disabilities and Autistic Spectrum Disorder

Spiegeltent
Tickets £8

Thursday 25 October 2pm

Slightly Fat Features Children's Show

The weird and wonderful Slightly Fat Features take their silliness very seriously. While their *One Night Only* show for grown-ups and families (p.21) is stuffed to the seams with staggering stunts and circus tricks – kids, you can expect incredible illusions and side-splitting comedy taken to new heights. This specially commissioned show is made just for you.

'A pure blast from start to finish'
**** *Chortle*

[Suitable for 8+]

Spiegeltent
Tickets £8



Friday 26 October 2pm

Squashbox Theatre presents

Greek Myths

Funny, surprising, informative (and a little bit mischievous), enjoy the Greek myths retold with traditional puppetry and innovative (and did we say funny?) storytelling. Actor and puppeteer Craig Johnson's performance celebrates nature, science and the astoundingly beautiful world around us.

'Craig Johnson is a consummate actor of rare skills. Totally at ease with his audience – adult and child alike – he combines an innate understanding and delight in storytelling with fantastic comic and musical skill.'

Mike Shepherd, *Kneehigh Theatre*

[Suitable for 5+]



Spiegel tent

Tickets £8



Saturday 27 October 2pm

Children are Stinky

Fresh from Edinburgh Fringe with five stars and The Children's Choice award, *Children are Stinky* is an exciting new comedy by *Circus Trick Tease*. A 90s soundtrack, incredible circus skills and outstanding comedy will have you laughing until your sides hurt.

Expect dare devil stunts, incredible acrobatics, lightning fast hula hoops, and loads of laughs and mischievous fun to leave adults and children with their jaws on the floor, hooting for more.

[Suitable for 4+]

Free post-show workshop,
booking required.



Spiegel tent

Tickets £8



Saturday 3 November 2pm

Monsters that Might Be

What might the future creatures of Earth look like? Zoologist, author and presenter Jules Howard takes audiences on a whirlwind tour of the creatures that might one day walk the Earth, simply by applying Charles Darwin's theory of evolution by natural selection.

Monsters that Might Be includes a host of newly imagined creatures. At the end of the show, you can pitch your own uniquely evolved animals, including snakes with eyelashes, tuskless elephants or bees that scream!

[Suitable for 7+]



St Mary's Hall Studio Theatre

Tickets £8

Science
Event

See also:

Släpstick

Full details, p.20

Performance
Event

See also:

Agar Art

Full details, p.37

Science
Event



Image: Sidonie Carey-Green



Made in Kent

The Festival's framework to support local performers at the start of their careers



Supported using public funding by
**ARTS COUNCIL
ENGLAND**



Thursday 4 Oct

Made in Kent: Poetry

Aspiring poets, young and old, gather to read their work and receive certificates and prizes.

Anthologies will be on sale and a selection of poems will be displayed around Whitefriars during the Festival.

Gulbenkian Theatre
Tickets Free

5.30pm Schools' Poetry
7.30pm Poet of the Year

Sponsored by
**University of
Kent**

Sunday 28 Oct 3pm

Track Record Showcase

Track Record searches out the best upcoming bands and solo musicians aged 12-18 in Kent.

The lucky winners receive: rehearsal space, studio time to record a demo CD, a live slot on radio and mentoring from an industry expert. Visit canterburyfestival.co.uk to apply in 2019.

The Ballroom, Orange St,
CT1 2JA
Tickets £6.25

Sponsored by



Supported by
Your Music School,
Beautiful Town Music
AcademyFM (107.8)

Mon 29 Oct 8pm

Made in Kent: Comedy

This summer the Festival has been on the hunt for Kent's best comedic talent through its annual comedy competition.

The shortlisted finalists will now be judged as they perform in front of a live Festival audience. Compered by Spiegeltent host Matt Barnard, this evening will have you in stitches.

Lanfranc Theatre,
Canterbury College
Tickets £6.25

Tuesday 30 Oct 7.30pm

Made in Kent: Dance

In partnership with Kent Dance Network, the Festival is hosting a showcase of contemporary dance, created by Kent-based dancers and choreographers.

Sidonie Carey-Green presents (i)rational

A powerful and often amusing journey through a series of superstitions.

Motion Alpha Dance Company presents The Game

Fast-paced dance theatre: build, connect, break apart and re-build.

Luke Birch presents Moth/Flame

Explore the poetics of the body through devised poetry and dynamic contemporary dance.

St Mary's Hall Studio Theatre
Tickets £6.25

Thurs 1 Nov 7.30pm

Made in Kent: Theatre

Everest Theatre Group presents

TRAVELER

According to Chaos Theory, a butterfly flaps in the Amazonian Jungle, and a storm ravages half of Europe. Tommy Andrews' death was the butterfly, what came next was more than just a storm. A group of reckless teenagers find a way to travel back in time, unfolding secrets that should have stayed in the shadows, fighting against Fate. Changing destiny is a tall order.

St Mary's Hall Studio Theatre
Tickets £6.25

Sponsored by

Paul Roberts

Headline Sponsor

Talks

Talks last for
approximately 1 hour.

Festival Talks take place in Canterbury Cathedral Lodge, within the Cathedral Precincts.
The Cathedral Lodge bar will be open 30 minutes prior to the Talk.

Books will be on sale at the venue.

Talks Series
sponsored by

The
Canterbury
Auction
Galleries
Headline Sponsor



Monday 22 October 5.45pm

Luke Harding

How Russia helped Trump win the
White House

Award-winning journalist Luke Harding reveals the true nature of Donald Trump's decades-long relationship with Russia, drawing on sources from the intelligence community. He shows how Russia is reshaping the world order to its advantage with an astonishing story of offshore money, sketchy real-estate deals, mobsters, money laundering, hacking and Kremlin espionage. Spotlighting powerful Russians close to Vladimir Putin, Harding's new book *Collusion* gets to the heart of the biggest political scandal of the modern era – something that should trouble us all.

Cathedral Lodge

Tickets £10.50

Tuesday 23 October 5.45pm

Patricia Davies: 95 years as a modern woman

In conversation with Simon Robinson

As a 95-year-old, the remarkable Pat Davies has lived through some of the greatest upheavals in history. Here, in conversation with Simon Robinson, she talks about women's lives in the 20th century from the vote onwards, including her experiences as a woman in wartime, serving as Special Duties (Linguist) in the WRNS for Bletchley Park. Pat will discuss her post-war university life and experience as a television producer from the late 1950s into the 1960s. One of the most talked-about guests last year, Pat returns in what promises to be another enthralling interview.

Cathedral Lodge

Tickets £10.50

Wednesday 24 October 5.45pm

Mark Austin

And Thank You for Watching

For over 30 years Mark Austin has covered the world's biggest stories as a foreign correspondent and anchorman for ITN and Sky News. He has witnessed first-hand some of the most epic events of our times, including the Iraq war and the historic transition in South Africa from apartheid to democracy. Here he lifts the lid on the world of television and reveals the extraordinary behind-the-scenes tales of a newsman's life on the road: the problems encountered, disasters, moments of high drama and raw emotion and, quite often, the hilarious happenings the viewer never imagines and only seldom sees.

Cathedral Lodge

Tickets £10.50



Thursday 25 October 5.45pm

Hilary Kay

My Favourite Things

Hilary Kay is a consultant, lecturer, broadcaster and writer on antiques and collectables. In this presentation she draws on her personal experience over 40 years in the rarefied world of international antiques; as an expert on *Antiques Roadshow* and as a former auctioneer and senior director of Sotheby's.

Asked to imagine her perfect *Roadshow* find, Hilary dreams of discovering one of The Beatles' satin military uniforms worn on the album cover photograph for *Sgt Pepper's Lonely Hearts Club Band*. This is your opportunity to find out more about Hilary's *Desert Island* antiques.

Cathedral Lodge
Tickets £10.50

Friday 26 October 5.45pm

John Suchet

Tchaikovsky Revealed

Highly regarded Classic FM radio presenter, author and newsreader John Suchet explores the troubled genius of the great Romantic Russian composer Tchaikovsky. Perhaps surprisingly, the man behind such joyous music as *Swan Lake*, *The Nutcracker*, the *1812 Overture* and many more of the best-loved classical pieces ever written was a deeply troubled individual unsure of his own talent and tortured by his sexuality. Suchet uses his storytelling talents to bring this musical giant to life.

Cathedral Lodge
Tickets £10.50

Monday 29 October 5.45pm

Anthony Warner

In conversation with Xanthe Clay

It is when people lie about food that the anger bubbles over. Whether it is the latest celebrity diet guru, fitness blogger or self-appointed nutrition expert, Anthony Warner – aka the Angry Chef – asks: 'What does this really mean?'

Using insight from psychiatrists, behavioural economists, food scientists and dieticians, Warner unravels why sensible, intelligent people are so easily taken in by the latest fads, giving us the tools to spot pseudoscience for ourselves. Interviewed by *Telegraph* food columnist Xanthe Clay, this promises to be an explosive event.

Cathedral Lodge
Tickets £10.50

All ticket prices include a Marlowe
per-ticket booking fee of £1.25

Science
Event



Tuesday 30 Oct 5.45pm

David Starkey

Henry VIII: The First Brexiteer?

Historian and presenter David Starkey, best known for his Channel 4 series, *The Six Wives of Henry VIII* and *Monarchy*, presents his witty insight into Britain's most notorious king.

Starkey argues that the Reformation could be defined as the first Brexit. He draws on his unique knowledge of Henry's reign to examine his tumultuous personal life, which pitted religion against politics as brutally as in our own age of Isis, through to the Grand Tourists who bought European culture with British money – all offering so very many parallels with the Brexit situation we find ourselves in today.

Cathedral Lodge

Tickets £10.50



Wednesday 31 Oct 5.45pm

Pierre-Emmanuel Taittinger

In 2015, Champagne Taittinger acquired a slice of farmland in Chilham, Kent, and announced the launch of Domaine Evremond. Now Pierre-Emmanuel Taittinger, President of Champagne Taittinger, has made English Sparkling Wine history by planting his first vines in the new Domaine Evremond vineyard – the first Grande Marque Champagne House to plant vines in the UK.

He discusses the history of his family's Champagne house, their affection for Kent, and why the combination of chalk soil, climate and topography here is ideal for producing quality sparkling wine.

Cathedral Lodge

Tickets £10.50



Thursday 1 Nov 5.45pm

John Tusa

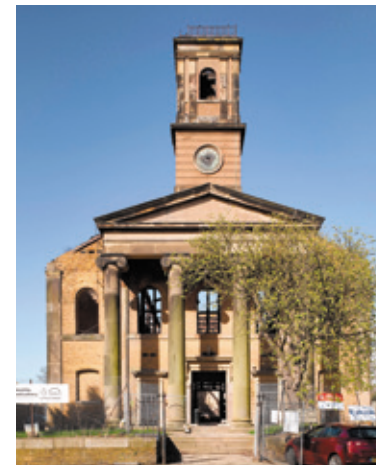
Making a Noise
Getting it Right, Getting it Wrong
In Life, the Arts and Broadcasting

John Tusa, veteran journalist, broadcaster and former Managing Director of BBC World Service and the Barbican Centre, is an influential player and observer of British cultural politics. In almost sixty years of professional life he has fought for and sometimes against major British arts and political institutions. He has stood up for the independence of the BBC, public funding of the arts and for the integrity of universities. He has made enemies in the process.

John relates the challenges and successes of this career with frankness and wit in equal measure.

Cathedral Lodge

Tickets £10.50



Friday 2 November 5.45pm

William Palin

The Fall and Rise of an
Architectural Giant:
Dockyard Church, Sheerness

Dockyard Church at Sheerness is among the most moving architectural sights in Kent. Built in 1828 to serve the Royal Naval Dockyard, it has stood derelict since a fire in 2001. Now this great monument is set to rise from the ashes.

In this talk William Palin (architectural writer, historian and conservation director) will discuss his role in this unique project, as well as his work at the Painted Hall in Greenwich, one of the largest painting conservation projects in Europe.

Cathedral Lodge

Tickets £10.50



Thursday 1 November 8pm

The Kent College Lecture

Ptolemy Dean

A Canterbury Tale: the story of the city's post-war planning

In partnership with the Festival's Headline Sponsor, Kent College, we are delighted to present award-winning architect Ptolemy Dean, who grew up in Brabourne and is an alumnus of the school. As works continue on Kent College's new Great Hall due for completion in 2019, Ptolemy's subject is particularly apt, touching on the challenges and joys of contemporary architecture in an historic context. Ptolemy was responsible for the Triforum Galleries Project at Westminster Abbey where he is Surveyor of the Fabric. Other projects include work at Easton Neston, which won regional and national RIBA awards in 2012. Ptolemy has appeared as the resident 'ruin detective' on BBC2's programme, *Restoration*.

Cathedral Lodge

Tickets £10.50

Sponsored by



Monday 22 October 8pm

Alice Roberts

Tamed: the extraordinary story of how dogs became our allies

For hundreds of thousands of years our ancestors depended on wild plants and animals for survival.

Then a revolution occurred – our ancestors' interaction with other species changed. They began to tame them. The human population boomed; civilisation began.

Anthropologist, writer and broadcaster Alice Roberts has presented the BBC series *Origins of Us*, *Coast* and *The Celts*. Here she uncovers the deep history of familiar species – with a focus on dogs – and how becoming part of our world changed them, and they in turn became essential to the survival and success of our own species.

Enlightening, wide-ranging and endlessly fascinating, Roberts' talk encompasses thousands of years of history and archaeology alongside cutting-edge genetics and anthropology.

Shirley Hall, The King's School

Tickets £16.50, students £12.50

Saturday 27 October 7.30pm

Doug Allan

Freeze Frame: a wildlife cameraman's adventures on ice

Doug Allan is best-known for his work in cold, remote places on BBC wildlife and expedition series such as *Blue Planet*, *Planet Earth*, and *Frozen Planet*. He's also the author of *Freeze Frame*, a collection of his images and reflections from the Poles.

Here he describes highlights from his 35-year career filming wildlife: diving under the ice with Weddell seals, making friends with whales, and NOT being eaten by polar bears. With a wealth of stories and pictures from behind the scenes, the cameraman examines the animals that live in the wildest places on earth.

'For me, wildlife cameramen don't come much more special than Doug. There's just no one else who knows these frozen worlds as he does.'

Sir David Attenborough

Shirley Hall, The King's School

Tickets £16.50, students £12.50

Science
Event

Science

Working closely with the professors and students of the School of Biosciences under the guidance of Dr. Dan Lloyd, this year's programme provides inspiring events for all ages.

Most are listed within their sections (Music, Performance and Family Friendly, highlighted by a green flag), but here you will find the additional events that simply refuse to be labelled.

Science Events
sponsored by
**University of
Kent**



Tuesday 23 October 8pm

The Denial of Death

How to overcome our fear of dying

Why do we fear death, where does this fear come from and what exactly are our concerns? This event starts with a fascinating 30 minute presentation on the topic of death anxiety (inspired by psychologist Sheldon Solomon's work on our fear of death), after which the discussion will be opened up to the floor.

The panel is chaired by Wendy Hills, Pilgrims Hospices Director of Nursing and Care Services, and will include, among others, Andrew Thorns, Pilgrims Hospices Medical Director and Martyn Yates, Spiritual Care Lead Pilgrims Hospice Canterbury.

Cathedral Lodge
Tickets £6.25

Supported by Pilgrims Hospices

Thursday 25 October 8pm

Adam Kay

This is Going to Hurt

Ninety-seven-hour weeks, life and death decisions, a constant tsunami of bodily fluids – and the hospital parking meter earns more than you. Welcome to the life of a junior doctor. Scribbled in secret after endless days, sleepless nights and missed weekends, Adam Kay's diaries provide a no-holds-barred account of his time on the NHS front line. Hilarious, horrifying and heartbreaking, this is everything you wanted to know – and more than a few things you didn't – about life on and off the hospital ward.

'Painfully funny. The pain and the funniness somehow add up to something entirely good, entirely noble and entirely loveable' *Stephen Fry*

Cathedral Lodge
Tickets £11.50

Monday 29 October 8pm

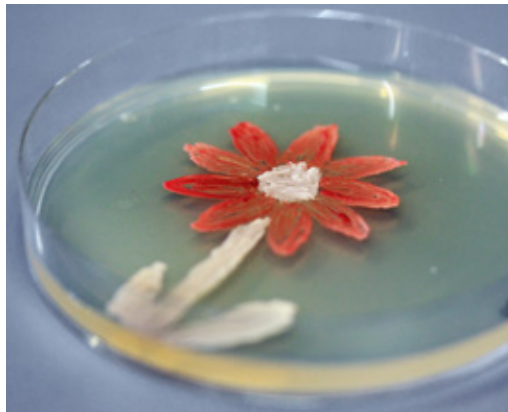
Robin Ince

A comedian's take on what makes us human

As a connoisseur of comedy and co-presenter with Professor Brian Cox of the BBC Radio 4 show *The Infinite Monkey Cage*, Robin Ince has spent decades mining our eccentricities. Here he asks some of the big questions in life: Why do we make the choices we do in life, where does anxiety come from, are we more than our brains... promising an hilarious and often profound insight into the mind.

'One of the UK's most accomplished, versatile comedians' *The Guardian*

Cathedral Lodge
Tickets £11.50



Tuesday 23 October 2pm

Ensonglopedia of Animals

Twenty-six animal songs, one for each letter of the alphabet: get to grips with fascinating facts about extraordinary echinoderms, distressed damselflies, crazy corals, batty birds and amazing arachnids. Expect the unexpected. And expect it to rhyme. This is the brand-new show from John Hinton, multi-award-winning creator of the 'Sciencetrilogy' of musical comedies about Charles Darwin, Albert Einstein and Marie Curie. And you'll even get a free pencil!

'John Hinton is an absolute joy... This guy could get anyone interested in science' *Adelaide Theatre Guide*

A free songwriting workshop with the company follows after the performance, suited to children aged 7+, though younger siblings are welcome. Booking required

[Suitable for ages 5 to 105]



Spiegeltent
Tickets £8

Family
Event

Saturday 27 October 2pm

Agar Art

Join scientists at the University of Kent for an art project with a difference. Colourful microbes and laboratory equipment replace paint and brushes as you create your own masterpiece on a Petri dish. After two days of microbial growth your artwork will be photographed and sent in a personalised email.

[Suitable for 11+]

Children under 16 should be accompanied by an adult.

Stacey Building,
University of Kent Canterbury Campus
Tickets £8

Family
Event

See also:

Anthony Warner

In conversation with Xanthe Clay.
Full details, p.33

Saturday 3 November 2pm

Monsters that Might Be

What might the future creatures of Earth look like? And what creatures might humankind accidentally create through its current actions? Zoologist, author and science presenter Jules Howard takes audiences on a whirlwind tour of the creatures that might one day walk the Earth, simply by applying Charles Darwin's theory of evolution by natural selection.

Monsters that Might Be includes a host of newly imagined creatures including rabbits that travel the treetops in monkey-like troops. At the end of the show, you can pitch your own uniquely evolved animals, including snakes with eyelashes, tuskless elephants or bees that scream.

[Suitable for 7+]



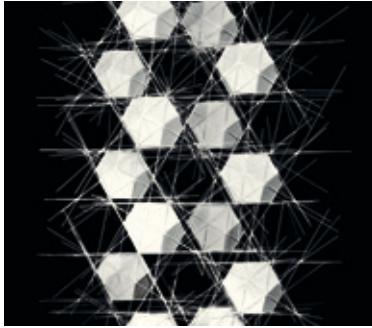
St Mary's Hall Studio Theatre
Tickets £8

Family
Event

All ticket prices include a Marlowe per-ticket booking fee of £1.25

Visual Arts

All exhibitions are free and open throughout the Festival, unless otherwise stated. Responsibility lies with the organisers of each exhibition and more information can be found on canterburyfestival.co.uk



Cover by Gerard Caris

Projecting Pentagonism: The Aesthetic of Gerard Caris

Projecting Pentagonism is the first UK exhibition of Dutch abstract artist Gerard Caris (b. 1925). Renowned for his experimentations with pentagons, a philosophy he refers to as 'Pentagonism', the show will include works spanning over 50 years ranging from Caris' earliest works made while studying in California with Richard Diebenkorn and David Hockney, through to drawings and unique relief sculptures, demonstrating a studio practice that continues to be innovative. This exhibition is supported by the Mondriaan Fund, the University of Kent and Canterbury Christ Church University. Exhibition runs until December 1

Sidney Cooper Gallery
22-23 St Peters St,
Canterbury, CT1 2BQ
Tue-Fri 10.30am-5pm,
Sat 11.30am-5pm
canterbury.ac.uk/sidney-cooper



The Canterbury War Horse

To commemorate the centenary of the end of the First World War, students and staff from Canterbury School of Visual Arts at Canterbury College (CSVA), in partnership with The Canterbury Journey, will create a large-scale wooden horse for Canterbury Cathedral Precincts. The Canterbury War Horse's head is bowed in respect, facing oncoming visitors to the Cathedral. It aims to encapsulate symbols of resilience, struggle, peace and solemnity.

The horse is sculpted from repurposed materials supplied by Jacksons Fencing, the poppies at the horse's feet are made from discarded plastic bottles.

Cathedral Precincts
See canterbury-cathedral.org for opening times
Usual Precinct charges apply.



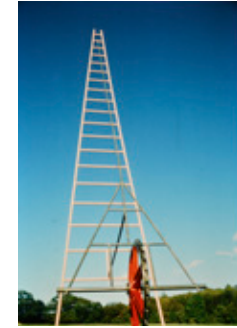
Under an Equal Sky - yesterday.
© Alex Ramsey

Under an Equal Sky

A series of installations by international artists Philip Baldwin and Monica Guggisberg reflecting on themes of war and remembrance, migration and refugees.

Commemorating the 100th anniversary of the end of the First World War, *Under an Equal Sky* will take the viewer on a journey that begins with 100 glass amphorae suspended in the shape of a ship in the Cathedral's Nave and ends with a glass wall of multi-coloured vessels.

Canterbury Cathedral &
Chapter House CT1 2EH
Until 11 Nov 2018
See canterbury-cathedral.org
for opening times
Usual Precinct charges apply.



Ladder by Maryrose Sinn

From the Kitchen Table

drew gallery projects archive 1984-90

Phyllida Barlow, Catherine Elwes,
Bonita Ely, Hamish Fulton,
Rob Kessler, David Mach,
Katharine Meynell, Maryrose Sinn

In 1984 for the first Canterbury Festival, curator Sandra Drew began a series of ground-breaking exhibitions. Supporting artists in the early stages of their careers, these site-responsive projects put Canterbury on the map as a place with a pioneering visual art scene.

This exhibition, curated by Judith Carlton, includes work from the 1980s exhibitions, archival material and reconstructions of original work.

6 Oct-2 Nov
Herbert Read Gallery UCA,
New Dover Road, Canterbury CT1 3AN
Open Mon-Fri 10am-6pm



Remember Me?!



L-13 Jimmy Cauty



109 Shaftesbury Avenue by Greg Stobbs

Remember Me?!

Exploring the act of Remembrance, Canterbury Cathedral's Artist in Residence, Dawn Cole, will be exhibiting her work in the Cathedral's Chapter House and running a series of free artist's talks and creative workshops during the Festival. Dawn has interpreted the Cathedral's archival material held within its historic collections to create an installation to commemorate the Centenary of the Armistice.

20 Oct-11 Nov, 10am-4pm Mon-Sat
(exhibition closed 3 Nov & 6-8 Nov).
Chapter House, Canterbury Cathedral,
CT1 2EH

canterbury-cathedral.org
Exhibition is free
Usual Precincts charges apply.

Light Emerging

Kathryn Rennie

An exhibition of paintings by Kathryn Rennie, exploring beyond the body to developing states of consciousness, transforming the human form into a matrix of light.

Conquest House Gallery,
17 Palace Street, Canterbury, CT1 2DZ
Tue-Sat, 8.30am-6pm
artincanterbury.co.uk

Canterbury Portrait Sketches

Kathryn Rennie

Be part of Kathryn's body of work by sitting for a portrait sketch.

To book a time slot, call 01227 472953
Conquest House Gallery,
17 Palace Street, Canterbury, CT1 2DZ
Tue-Sat, 8.30am-6pm
artincanterbury.co.uk

Crows Camp Studio

Autumn Exhibition

Paintings, sculpture, ceramics, silk wearable art, glass, mixed media, Raku, gifts and cards by well-known local artists.

Crows Camp Studio
Crows Camp Road, Bishopsbourne
CT4 5JH
20-21, 27-28 Oct, 3 Nov 11am-5pm
crowscamp.co.uk

Canterbury Photographic Society Annual Exhibition

Display of photographs by members.
A wide selection of members' prints and projected images will be on view.
Refreshments will be available.

St.Peter's Methodist Church Hall,
Canterbury, CT1 2BE
27 Oct, 10am-4pm
canterburyphotographicsociety.com

DISCLOSURE

Contemporary and traditional photographs revealing not only what is seen, but that which the viewer brings to the image.

Somerset Maugham Gallery,
The Horsebridge Arts Centre,
11 Horsebridge Road, Whitstable,
CT5 1AF
Thu 18-Tue 30 Oct, 10am-5pm

Beyond the Barricade

Unconfined to the gallery space, Beyond the Barricade explores how art becomes an expression of social and political action.

Studio 3 Gallery, School of Arts,
Jarman Building, University of Kent,
Canterbury, CT2 7UG
Fri 28 Sep-Fri 30 Nov,
Mon-Fri 11am-5pm
blogs.kent.ac.uk/studio3gallery

Stelling Minnis Art Group

An exhibition of members' paintings, sculptures and crafts, inspired by Rose Wylie.

Tea, lunch, coffee and cake available.
Stelling Minnis Village Hall,
Bossingham Road, Canterbury, CT4 6AG
Sat 20-Sun 21 Oct, 10am-5pm

Painting the Pilgrims Way Via Francigena

Paintings in oils of people and landscapes encountered on Via Francigena from Canterbury Cathedral to Dover Harbour.
St. John the Baptist Church, Church Road,
Barham, Canterbury, CT4 6PB
Sat 20 Oct-Sat 3 Nov, 10am-4pm

The Butterfly Machine

Greg Stobbs

Audience becomes artist in this unprecedented collaboration for the Festival. With work bridging the fields of illustration, fine art, installation and street art, artist Greg Stobbs teams up with Richard Navarro and Cal Hewitt, musicians and inventors of The Butterfly Machine. This system uses movement to conjure sound from artworks. Developed at Simon Langton Grammar School for Boys and the Beaney House of Art and Knowledge for the RNIB's 'Sensing Culture' programme, this is the first installation in a private gallery of a pioneering system opening the visual arts to new audiences.
Launch event, Sunday 28 Oct, 6pm
The Lilford Gallery
3 Palace Street, Canterbury, CT1 2DZ
Mon-Sat 9.30am-5pm,
Sun 11am-4pm
lilfordgallery.com

Canterbury Throwdown Potters Show

A range of work from delicate sculpture to dramatic, large scale vessels from more than 20 ceramicists make up this exhibition showcasing the varied processes used by the talented Throwdown Potters.

76 Castle Street
Canterbury, CT1 2QD
Mon-Sat 9.30am-5pm
lilfordframing.com

The Silhouette Cathedral CT^Lab

An interactive light installation and scaled skeletal form of the famed Canterbury Cathedral, designed by CT^Lab. The design creates a light tunnel that allows the user to move through it with the framework lights reacting to the movement.
Solly's Orchard, CT1 2AP

East Kent Artists' Open Houses

East Kent is home to an abundance of creative talent. Throughout the Festival local artists will be opening their houses and studios to the general public, free of charge. This is a great chance to see unique artworks and meet the artists within their creative environment.

For up to date information and full trail listings, please visit

www.ekoh.org.uk | Facebook: [East-Kent-Artists-Open-Houses](https://www.facebook.com/East-Kent-Artists-Open-Houses) | Twitter: [@ArtistsOpenHous](https://twitter.com/ArtistsOpenHous)



Clare Youngs



Mark Howland

Canterbury Trail

Maps and leaflets available from Canterbury Visitor Information Centre at The Beaney House of Art and Knowledge and the Canterbury Festival Office on Orange Street. Enquiries: Lindsay Soord Lindsay.west.soord@live.co.uk

Faversham Trail

Maps and leaflets available from the Fleur de Lis Tourist Information Centre on Preston Street and Creek Creative. Enquiries: Anne MacLaren 01795 535515 anne@creek-creative.org

Whitstable Trail

Maps and leaflets available from the Horsebridge Arts and Community Centre, The Library, Keams Yard Gallery and Whitstable Trust. Enquiries: Sue Cavanagh openhousewhitart@outlook.com

Herne Bay Trail

Maps and leaflets available from Beach Creative on Beach Street, Herne Bay Museum and Bay Art Gallery both on William Street, Mackaris at The Bandstand on Central Parade and Herne Bay Library on the High Street. Enquiries: Mandy Troughton 07890 065046 mctrout@hotmail.com

Margate and Cliftonville Trail

Maps and leaflets available from Margate Visitor Information Centre, The Droit House, Stone Pier, Margate and all participating venues. Enquiries: Lucy Seijo lucyseijo@hotmail.com

Ramsgate and Broadstairs Trail

Maps and leaflets available from Ramsgate Information Centre in Ramsgate Harbour, Nice Things, Harbour Street and York Street gallery, AiR, 18 Harbour Street in Ramsgate, Broadstairs Information Kiosk in Viking Bay, New Kent Art Gallery on Albion Street, and all participating venues. Enquiries: Sarah Stokes sarahstokes37@gmail.com

Deal Trail

Maps and leaflets available from The Astor Theatre, Stanhope Road, Deal Library, off Queen Street and The Landmark Cafe, bottom of Trinity Road. Enquiries: Kate Baker katebakermosaicmuse@icloud.com

Opening:

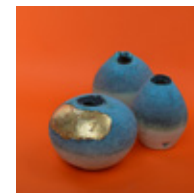
11am-5pm, Sat 20-Sun 21 October

11am-5pm, Sat 27-Sun 28 October

11am-5pm, Sat 3-Sun 4 November



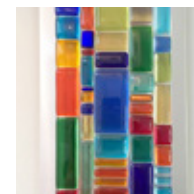
Lucy Rutter



Viv Yankah



Christine Jeffries



Tony Carol

Responsibility
lies with the
individual
house
organisers.



CREATING EXCELLENCE IN THE ARTS



Kent College - proud to sponsor Canterbury Festival

- Exceptional academic results at IB, A Level and GCSE
- Music, Art and Drama Scholarships available for Year 7, 9 and 12
- Regular regional and international performance opportunities
- 600 seat state-of-the-art auditorium for the performing arts opening in 2019
- 6 choirs, numerous instrumental groups, including orchestras and chamber ensembles
- Students continue performance studies beyond school at leading conservatoires and drama schools

Come and visit us
01227 763 231



Kent College
Canterbury
KENTCOLLEGE.COM

Saturday 20 October**Area of Outstanding Natural Beauty**

One rail stop from Canterbury East, walk to the Mount in Perry Wood with stunning views over the North Downs.

Meet: 10am, Selling Railway Station, ME13 9PW

(grid ref. TR 052 572)

Leader: Andrew Brooks

Duration: 3 hours (6 miles, circular)
Canterbury Ramblers

**The Geology of Herne Bay**

A look at the geology of the cliffs between Herne Bay and Reculver.

Meet: 10am, Car Park at eastern end of Reculver Drive, Coastal Park, Bishopstone, CT6 6QF;

OS reference: TR 205 686

Leader: Geoff Downer

Duration: Up to 2 hours

(>1 mile, circular)

Friends of Canterbury
Archaeological Trust

**Canterbury's 'Gruesome' Tales**

Gruesome stories and other interesting aspects of medieval Canterbury.

Meet: 2.30pm, Westgate Towers, St Peter's Street, CT1 2BX

Leader: Lenny Clark

Duration: 1 hour 45 minutes
(1.5 miles, linear)

Canterbury Tourist Guides Ltd

**Sunday 21 October****Birdwatching Walk**

A slow walk to identify bird species using the seashore and coastal area.

Meet: 8.30am, The Old Sportsman, Faversham Road, Seasalter, CT5 4BP

Leader: Glynn Crocker

Duration: 2.5 hours

(1-2 miles, linear)

Canterbury RSPB

The Materials and History of Buildings

We will be looking at how buildings have been built and altered over time.

Meet: 11am, Wincheap front of the Maidens Head Car Park

Leader: Nick Blake

Duration: 2 hours (2 miles, circular)

Possible hazards: Narrow

pavements.

Campaign to Protect Rural England

**Victorian City: Splendour and Squalor**

Pigs in the streets, sewage in the Stour, elegant shops and grandiose banks: find out about life in Victorian Canterbury.

Meet: 2pm, Gas Street entrance to Canterbury Castle, CT1 2PR

Leader: Doreen Rosman

Duration: Up to 2 hours

(>1 mile, linear)

Friends of Canterbury

Archaeological Trust

Monday 22 October**Frontline Folkestone**

On the frontline of trade and of war, threatened by invasions, explore how over the centuries Folkestone reacted and survived.

Meet: 10am, The Station House, Folkestone Harbour, CT20 1QH

Leader: Liz Minter

Duration: Up to 2 hours

(1.5 miles, linear)

Friends of Canterbury

Archaeological Trust

**Canterbury's Medieval Hospitals**

Some ancient almshouses still fulfil the functions envisaged by their medieval founders: an opportunity to visit and learn about them.

Meet: 2pm, St John's Hospital, Northgate, CT1 1BG

Leader: Sheila Sweetinburgh

Duration: Up to 2 hours

(1 mile, linear)

Friends of Canterbury

Archaeological Trust

**Tuesday 23 October****Tales of Medieval Travellers**

Throughout its history Canterbury has attracted visitors, traders and pilgrims. Learn who came and why, where they lodged, what they did.

Meet: 10am, The West Gate, Canterbury (North Lane car park side), CT2 7EB

Leader: Meriel Connor

Duration: Up to 2 hours

(1 mile, linear)

Friends of Canterbury

Archaeological Trust

Guided Tour of Chilham Castle Gardens and House

A guided tour of the ancient castle gardens and the Jacobean mansion with Castle Archivist, Michael Peters.

Meet: 11am, Chilham Castle Gate, Chilham Square, Chilham, CT4 8DB

Leader: Michael Peters

Duration: 2 hours

(0.5 miles, circular)

Chilham Tourism and Retail Group

**Christ Church Priory's Water Supply**

A walk within the Cathedral Precincts tracing the historical distribution of water to the monastic buildings.

Meet: 2pm, The Buttermarket, CT1 2HW

Leader: Geoff Downer

Duration: Up to 2 hours (Within the Cathedral Precincts, circular)

Friends of Canterbury

Archaeological Trust

Wednesday 24 October**St Martin's and Beyond**

Visit St Martin's before walking to Fordwich and back through historical, varied landscape with a pause at the pub.

Meet: 9.45am, St Martin's Church, CT1 1PW

(grid ref. TR 158 577)

Leader: Rob Veltman

Duration: 3 hours (5 miles, circular)

Canterbury Ramblers



Gateway to Canterbury past and present



Tickets for all Walks are £9.25

(this includes a Marlowe per-ticket booking fee of £1.25)

Numbers are limited so please book early

Tickets are available from the Festival box office at the Marlowe Theatre

All durations are approximate



Dogs on leads welcome



Some stiles on route



**May be muddy
Suitable footwear &
clothing required**



Some steps on route



Some hills on route



Uneven ground



Canterbury's Medieval Friaries

Canterbury was home to three orders of friars, but little now remains. We will explore where they lived.

Meet: 10am, Outside the Marlowe Theatre, The Friars, CT1 2AS

Leader: Sheila Sweetinburgh

Duration: Up to 2 hours

(>1 mile, linear)

Friends of Canterbury

Archaeological Trust



The Village of Bridge

Roman soldiers, Canterbury pilgrims, race-course visitors, stage-coach travellers – the ancient Watling Street brought them all through Bridge.

Meet: 2pm, Bridge Parish Church, CT4 5AR

Leader: Pauline Pritchard

Duration: Up to 2 hours (>1 mile, linear)

Friends of Canterbury

Archaeological Trust

St. Mildred's – Gardens, Saints and Industry

Pleasure gardens, industry, civil war and saints – the alternative history of Canterbury.

Meet: 2.30pm, outside Canterbury East Station, CT1 2RB

Leader: Jenny Watson-Bore

Duration: 1 hour 45 minutes (1.5 miles, linear)

Canterbury Tourist Guides Ltd



Thursday 25 October

Faversham: The King's Port

Beer, bricks, gunpowder, an abbey, and a famed medieval drama: take a saunter around this historic town.

Meet: 10am, outside Faversham Library, Newton Road, ME13 8DY

Leader: Lis Hamlin

Duration: Up to 2 hours (1 mile, linear)

Friends of Canterbury Archaeological Trust

Herne – My Patch

Undulating countryside walk via Herne Windmill and Curtis Wood. May be muddy. Please bring own refreshments.

Meet: 10.30am, Junction Margate Rd/Hunters Forestall Rd Broomfield CT6 7BN

(grid ref. TR 192 668)

Leader: Irene Harding

Duration: 2.5 hours (4.5 miles, circular)

Canterbury Ramblers



A Walk in and about St Augustine's College

A tour of the buildings of the former St Augustine's College, now part of the King's School.

Meet: 2pm, Lady Wootton's Green (off Broad Street), CT1 1NG

Leader: Peter Henderson

Duration: Up to 2 hours (in and around college site, linear)

Friends of Canterbury Archaeological Trust



Friday 26 October

The Director's Walk

The Director of the Archaeological Trust can evoke the ancient city of Canterbury in a way that no-one else can.

Meet: 10am, The Buttermarket, CT1 2HW

Leader: Paul Bennett

Duration: Up to 2 hours (>1 mile, circular)

Friends of Canterbury Archaeological Trust

From Hollywood to Fascism (via Billy Bunter)

Mostly flat easy coastal walk with lovely scenery. Discover some unexpected history of Kingsgate.

Meet: 10am, Botany Bay Hotel, Kingsgate Avenue, Broadstairs, CT10 3LT

(grid ref. TR 394 708)

Leader: Penny Stevens

Duration: 2 hours 30 minutes (5 miles, circular)

Canterbury Ramblers



Saturday 27 October

Country Paths a Stone's Throw from the City

Discover some of the myriad of footpaths easily accessible from the City, passing through farmland, woodland and a nature reserve.

Meet: 10am, UKC Giles' Lane car park, CT2 7NB (grid ref. TR 140 601)

Leader: Cliff Huggett

Duration: 3 hours (5.5 miles, circular)

Canterbury Ramblers



Historic Charing and its Church

Explore Charing with members of its historical society. Learn of attempts to save Archbishop's Palace and (optionally) climb church tower.

Meet: 2pm, Charing Parish Church, TN27 0LP

Leaders: Kerstin Müller, Kevin Moon, Valerie Yeeles

Duration: Up to 2 hours (1 mile, circular)

Friends of Canterbury Archaeological Trust



Sunday 28 October

An Armchair Tour of Hidden Canterbury

A virtual excursion, enabling those of limited mobility (and others) to see images of places they can't reach. Wheelchair accessible.

Meet: 2pm, Friends Meeting House, 6, The Friars, CT1 2AS

Leader: David Birmingham

Duration: 1.25 hours

(within the building)

Friends of Canterbury

Archaeological Trust

Monday 29 October

Exploring King's School

Find out about the history and buildings of the King's School on a walk around the Cathedral Precincts.

Meet: 10am, The Mint Yard Gate, The Borough, CT1 2EZ

Leader: Peter Henderson

Duration: Up to 2 hours

(within King's School grounds, circular)

Friends of Canterbury

Archaeological Trust

Tuesday 30 October

'Strangers' in Canterbury

Walloons, Flemings and Huguenots sought sanctuary in Tudor and Stuart Canterbury. Find out about them, their descendants, and their new home.

Meet: 10am, Entrance to St Augustine's Abbey, Longport, CT1 1PF

Leader: Doreen Rosman

Duration: Up to 2 hours (>1 mile, linear)

Friends of Canterbury

Archaeological Trust

The River Bridges, Waterways and Mills of Canterbury

Did you know there are at least 36 river bridges in Canterbury? Try to visit them all and the sites of ancient mills.

Meet: 10am, Dane John Gardens, Canterbury CT1 1YW

(grid ref. TR 148 574)

Leader: Cliff Huggett

Duration: 3 hours (5 miles, linear)

Canterbury Ramblers

Tickets for all walks are £9.25 (this includes a Marlowe per-ticket booking fee of £1.25)

Canterbury Rings Walk: The Fordwich Dragon

Discover the amazing prehistory of this ancient landscape including Paleolithic hunters, Bronze Age barrows, Iron Age tracks and a dragon!

Meet: 11am, Fordwich Town Hall, CT2 0BD

Leader: David Reekie

Duration: 2 hours (2 miles, circular)

The Canterbury Rings

**Wednesday 31 October****Introductory Tour of the Dover Western Heights**

Explore some of the most interesting parts of Dover's Western fortifications, including short low passage ways, with an experienced archaeologist. Moderately strenuous.

Meet: 10am, Public car park adjacent to St Martin's Battery off South Military Road, Dover. (grid ref. TR 313 407)

Leader: Keith Parfitt

Duration: Up to 2 hours (1 mile, circular)

Friends of Canterbury Archaeological Trust

**A Literary Tour of the King's School**

An opportunity to see the Maugham Library and Hugh Walpole's outstanding collection of English literary manuscripts.

Meet: 2pm, The Mint Yard Gate, The Borough, CT1 2EZ

Leader: Peter Henderson

Duration: Up to 2 hours

(within King's School grounds, circular)

Friends of Canterbury Archaeological Trust

**Thursday 1 November****Made in Canterbury**

A walk tracing industries that used to flourish in Canterbury, from tile-making and brewing to weaving and an iron foundry.

Meet: 10am, Canterbury West Station

Leader: Peter Berg

Duration: Up to 2 hours (about a mile, linear)

Friends of Canterbury Archaeological Trust

Little Stour, Big Skies

Enjoy wide vistas from the banks of the Little Stour, rich in bird-life. Return via open-air locomotive museums and historical Preston Court.

Meet: 10am, The Garden Centre, The Street, Preston. CT3 1ED (grid ref. TR 251 612)

Leader: Rob Veltman

Duration: 2 hours 30 minutes (5 miles, circular)

Canterbury Ramblers

**Blitzed Bits**

A tour focusing on Canterbury's areas affected by the Second World War and the resulting changes of building and landscape.

Meet: 10am, The Beaney House of Art & Knowledge, 18 High Street, CT1 2BD

Leader: Bob Collins

Duration: 1 hour 30 minutes (1.5 miles, linear)

Blue Badge Tourist Guide

**Friday 2 November****The Roof Lines of Canterbury**

Canterbury's medieval Cathedral rises above a jumble of chimney stacks, roof ridges and gables: come and see what's above your head.

Meet: 10am, The Buttermarket, CT1 2HW

Leader: Hubert Pragnell

Duration: Up to 2 hours (>1 mile, circular)

Friends of Canterbury Archaeological Trust

Saturday 3 November**The Story of Canterbury**

From the Romans to the 18th century remodelling of the city. See and hear how life changed over the centuries.

Meet: 10am, Lady Wootton's Green

(off Broad Street), CT1 1NG

Leader: Doreen Rosmon

Duration: Up to 2 hours (>1 mile, linear)

Friends of Canterbury Archaeological Trust

Goodnestone and Chillenden Walk

Through woods and fields around Goodnestone and Chillenden. Includes the Serpentine Path, walked by Jane Austen on her visits there.

Meet: 10am, by St. Bartholemew's Church, The Street, Goodnestone CT3 1PL (grid ref. TR 255 546)

Leader: Jenny Keaveney

Duration: 3 hours (6 miles, circular)

Canterbury Ramblers

**Guided Tour of Chilham Village and St Mary's Church**

Guided tour around the main village roads and Medieval square and the interior of the church.

Meet: 11am, Taylor's Hill car park, Chilham, CT4 8BD

Leader: Andy MacLean

Duration: 1 hour 45 minutes (1.5 miles, linear)

Chilham Tourism and Retail Group



Tickets for all walks are £9.25 (this includes a Marlowe per-ticket booking fee of £1.25)





St Edmund's School
Canterbury

Pre-Prep | Junior | Senior | Sixth Form

A photograph of two students in 1940s-style clothing (suits, hats, suspenders) performing a dance move. The female student is in a high kick, and the male student is supporting her. The background is a warm, orange-toned wall.

Be all
you can be

St Ed's is a school where every pupil is connected by a love of learning, the pursuit of possibility and the challenge of being the very best they can be.

01227 475601 | www.stedmunds.org.uk

Open Day
Saturday 6 October

Saturday 20 October**Silk Painting Taster workshop**

Learn different techniques for silk painting and produce a unique scarf or sun catcher with intense colours. Everything provided.

11am-1pm, Crows Camp Studio,

Bishopsbourne, Kent CT4 5JH

Tickets: £30 (4 max per class)

Book: 07764 279103

crowscamp.co.uk

Mono Printing with Colin McGowan

Learn mono printing and produce a unique individual print. Bring your ideas, photos and an overall. Everything else provided.

11am-1pm, Crows Camp Studio,

Bishopsbourne, Kent CT4 5JH

Tickets: £30 (4 max per class)

Book: 07714 074741

cpm.ceramic@gmail.com

locusarts.co.uk

Never Such Innocence

The acclaimed narrative recital of words and music from the First World War with Christopher Kent and Gamal Khamis.

7.30pm, Sarah Thorne Theatre,

Broadstairs, CT10 2BN

Tickets: £12 adv. £14 on the door

Book: 01843 863701

sarahthornetheatre.co.uk

Ventoux

Join 2Magpies as they re-stage the race between Lance Armstrong and Marco Pantani using breath-taking video accompaniment and a pair of road bikes.

7.30pm, Theatre Royal Margate, CT9 1PW

Tickets: £12, concs £10, bkg fees apply

Book: 01843 292795

theatreroyal margate.com

Sunday 21 October**Local history of Charlton Estate, Bishopsbourne: From Caesar to Pink Floyd**

The land, people and events. The Royalist escape tunnel; George IV's drunken parties with Jane Austen's circle; the Canadian conman.

3.30pm, Charlton Place, Bishopsbourne, CT4 5JA

Tickets: £12, conc. available

Book: 01227 831355

charlton-park.org

Tabby McTat

Tabby McTat is the heart-warming tale of friendship and loyalty from the team behind Stick Man. Suitable for children and families of all ages.

2pm & 4.30pm, Theatre Royal Margate,

CT9 1PW

Tickets: £12.50, conc. available, bkg fees apply

Book: 01843 292795

theatreroyal margate.com

Canterbury Music Club Recital

A song recital by 2017 Wigmore Competition winner Julien Van Maellert (baritone) with internationally acclaimed pianist Simon Lepper.

3pm, St Gregory's Centre for Music,

Canterbury, CT1 1ND

Tickets: £15

Book: wegottickets.com/CanterburyMusicClub

The Wit and Songs of Noël Coward with Peter Gill

Pianist and entertainer, Peter Gill presents a tribute to the wit and song-writing skill of Noël Coward, who said of himself 'I am an enormously talented man and there is no point in denying it'.

6pm, Sarah Thorne Theatre,

Broadstairs, CT10 2BN

Tickets: £13 adv. £15 on the door.

Book: 01843 863701

sarahthornetheatre.co.uk

Tuesday 23 - Saturday 27 October**See How They Run!**

By Philip King.

Described as arguably the funniest farce ever written.

7.45pm, Playhouse Theatre Whitstable

Tickets: £10

Book: 01227 272042

playhousewhitstable.co.uk

Tuesdays 23rd and 30th Oct**Yoga with Cass Xuxin**

Wellbeing & Fitness

5:30pm-6:30pm Pilates & Restorative Yoga

7:00pm-8:30pm Aṣṭanga Vinyasa

Viewing Gallery, Canterbury College Sport

& Fitness Centre, New Dover Road

Tickets: £6 - £12

Book: 07780 543848

Namaste@YogaWithCass.co.uk



The Umbrella showcases a wide range of additional events happening during the Festival.

Responsibility for events in the Umbrella lies with the organisers of each event.

Information correct at time of printing. Please see canterburyfestival.co.uk for up-to-date information.

Wednesday 24 October**Bhakti Prabhava Swami**
The Ultimate Inner Fulfilment

A travelling monk and senior Vedic scholar will be giving a lecture on the path to inner satisfaction and happiness.
7pm, Conquest House Gallery, Canterbury, CT1 2DZ
Tickets: Free
Book: 01227 472953
artincanterbury.co.uk

Family History Library
Open Day

Tour our genealogical and heraldic library and learn about our courses and qualifications. Experts available offering genealogical and heraldic advice.
10am-4pm, IHGS - The School of Family History, 79-82 Northgate, CT1 1BA
Tickets: Free
ihgs.ac.uk

In Conversation With...

An intimate evening in conversation with Philip Baldwin and Monica Guggisberg, creators of *Under an Equal Sky* which is currently exhibiting in Canterbury Cathedral (see p.38).
7.30pm. Eastern Crypt, Canterbury Cathedral, CT1 2EH
Tickets £10 from
canterburyticketshop.com

Friday 26 - Sunday 28 October**Hilderstone Players**
Dangerous Corner by J. B. Priestley
presented by arrangement with Samuel French

During a dinner party an ill-considered remark sparks off a relentless series of revelations and other more dangerous secrets. A classic Priestley play.
7.30pm (Fri, Sat), 2.30pm (Sun), Sarah Thorne Theatre, Broadstairs, CT10 2BN
Tickets: £11 adv. £13 on the door.
Book: 01843 863701
sarahthornetheatre.co.uk

Saturday 27 October**Expand your creative writing with**
SaveAs Writers

One-day creative writing workshop consisting of five separate seminars covering all aspects of the art.
9.30am, St Mary Bredin Church, 59 Nunnery Fields CT1 3JN
Tickets: £9 per workshop, £40 for all 5.
Book: saveas@hotmail.co.uk
saveaswriters.co.uk

Mono Printing with Colin McGowan

Learn mono printing and produce a unique individual print. Bring your ideas, photos and an overall. Everything else provided.
11am-1pm, Crows Camp Studio, Bishopsbourne, Kent CT4 5JH
Tickets: £30 (4 max per class)
Book: 07714 074741
cpm.ceramic@gmail.com
locusarts.co.uk

Ayurvedic Workshop with Syama Kumari

Discover a powerful mind-body health system, holistic, natural – and delicious! – approach to good health. With a free lunch.
1pm, Conquest House Gallery, Canterbury, CT1 2DZ
Tickets: Free
Book: 01227 472953
artincanterbury.co.uk

Poetry Reading

Ruth O'Callaghan and Nancy Charley will be reading from their new collections. Plus open mic.
6.45pm, St Mary Bredin Church, CT1 3JN
Tickets: £4 on the door
saveaswriters.co.uk

The Fujita Piano Trio

Piano Trios composed by Mendelssohn, Haydn & Clara Schuman and Three Miniatures Book 1 by Frank Bridge
7.30pm (Doors 6.45pm)
Tickets: £16 (£8 students)
Book: 01227 277227
gillsmyth@talktalk.net

Sunday 28 October**Kirtan Yoga: Meditation For The 21st Century**

Experience the bliss of an interactive, musical meditation workshop with a veggie feast to satisfy the stomach and the soul.
2pm, Conquest House Gallery, Canterbury, CT1 2DZ
Tickets: Free
Book: 01227 472953

Monday 29 October**Singing Workshop with**
Cantiacorum Community Choir

Enjoy singing ancient a cappella music with members of Cantiacorum Community Choir – for beginners as well as experienced singers!
7.30pm, St Peter's Anglican Church, CT1 2AT
Tickets: Donation on the door.

Thursday 1 November**An Introduction to Exploring Art Philosophically -**
Mina Cullimore

From Plato to de Beauvoir, we will be considering the purpose and nature of art and the artist in society.
7pm-9pm, Conquest House Gallery, Canterbury, CT1 2DZ
Tickets: £10
Book: 01227 472953
artincanterbury.co.uk

Marcus Brigstocke - Devil May Care

The multi-award winning comedian is back. 'Rare is the stand-up show that makes you laugh, think and then fight back the tears. This is it' *The Daily Telegraph*
7.30pm, Theatre Royal Margate, CT9 1PW
Tickets: £16, bkg fees apply
Book: 01843 292795
theatreroyalmargate.com

Friday 2 November**Shivers - Stories from the**
Book of Darkness & Light

A trio of delightfully thrilling ghost stories, set to the haunting sounds of the violin.
7.30pm, Theatre Royal Margate, CT9 1PW
Tickets: £14, concs £12, bkg fees apply
Book: 01843 292795
theatreroyalmargate.com

Saturday 3 November

Expand your Creative Writing with SaveAs Writers

One-day creative writing workshops consisting of five separate seminars covering all aspects of the art.
9.30am, St Mary Bredin Church, CT1 3JN
Tickets: £9 (£40 if you attend all 5)
Book: saveas@hotmail.co.uk
saveaswriters.co.uk

Drama Workshop with the Bhaktivedanta Players

They have been enchanting audiences across the globe with modern renditions of the epics of ancient India. Interactive drama workshop.
11am-12.30pm, 17 Palace Street, Canterbury, CT1 2DZ
Tickets: Free
Book: 01227 472953
artincanterbury.co.uk

Silk Painting Taster Workshop

Learn different techniques for silk painting and produce a unique scarf or sun catcher with intense colours. Everything provided.
11am-1pm, Crows Camp Studio, Bishopsbourne, Kent CT4 5JH
Tickets: £30 (4 max per class)
Book: 07764 279103
crowscamp.co.uk

Cantiacorum Singing Workshop

Enjoy singing ancient a cappella music with members of Cantiacorum Community Choir – for beginners as well as experienced singers
3-4.30pm, Conquest House Gallery, CT1 2DZ
Tickets: £5
Book: 01227 472953
artincanterbury.co.uk

Saveas Writers' International Writing Competition 2018 Awards Evening

'Nightmare: Gothic Dreams' - awards evening and readings of both poetry and prose.
6.45pm, St Mary Bredin Church, CT1 3JN
Tickets: £4 on the door
saveaswriters.co.uk

'The Devil's Bride'

Based on the chilling story by Victorian Gothic Horror author Sheridan le Fanu

An aspiring 17th century painter seeks an apprenticeship with a famous artist who he finds out has made a pact with the Devil. The Devil returns to claim his wicked prize!
7.30pm, Sarah Thorne Theatre, Broadstairs, CT10 2BN
Tickets: £15 adv, £17 on the door
Book: 01843 863701
sarahthornetheatre.co.uk

This Turbulent Priest

A gripping play that transports you back in time to witness the events that lead to Thomas Becket's brutal murder.
7.30pm, The Church of St. Peter the Apostle, Canterbury, CT1 2AT
Tickets: £9, concs. available
Book: 01227 472953
artincanterbury.co.uk

Hannah and Hanna in Dreamland

A story about friendship, migration and karaoke.
Written and directed by John Retallack.
7.30pm, Theatre Royal Margate, CT9 1PW
Tickets: £12.50, concs available, bkg fees apply
Book 01843 292795
theatreroyalmargate.com



Whatever you do... Make Music!

The University of Kent has a thriving programme of music-making for all students, together with staff and the local community – including a chorus, chamber choir, concert and big bands, symphony orchestra, jazz groups and music theatre. There is a whole range of concerts, both on the University campuses and also in the spectacular surroundings of Canterbury Cathedral. Workshops are held with internationally-acclaimed visiting musicians.



Colyer-Fergusson Music Building, Canterbury

The award-winning Colyer-Fergusson Building was opened in December 2012. With its state-of-the-art facilities and flexible acoustics and seating, it is the venue for many of the University's major concerts and events and student music societies' rehearsals and activities.



Music Scholarships Patron: Dame Anne Evans

Music Scholarships, usually between £1,000-£2,000 a year, are awarded to talented singers and instrumentalists studying for any degree at the University.

For further information

Susan Wanless
Director of University Music
E: S.J.Wanless@kent.ac.uk
T: 01227 823305
www.kent.ac.uk/music



Competition submissions now open!
Deadline: Monday 21st January 2019



Twin Islands, Shortlist 2017

CANTERBURY
anifest
will be back in Spring 2019

Go to our website for more details: www.canterburyanifest.com

CanterburyAnifest
 #CburyAnifest

Petman, Shortlist 2017



Anifest is brought to you by



Canterbury
Christ Church
University



Proud Supporters of the Canterbury Festival

www.junior-kings.co.uk

www.kings-school.co.uk

WEEK 1	Saturday 20 October	Sunday 21 October	Monday 22 October	Tuesday 23 October	Wednesday 24 October	Thursday 25 October	Friday 26 October	Saturday 27 October
The Marlowe Theatre		7.30pm - p.4 The Feeling		7.30pm - p.20 Släpstick		7.30pm - p.6 The Shires	7.30pm - p.7 Sir Bryn Terfel	7.30pm - p.10 Sophie Ellis-Bextor
Canterbury Cathedral	7.30pm - p.2 European Union Chamber Orchestra (Nave)	3.15pm - p.2 Festival Evensong						7.30pm - p.7 Rachel Podger with VOCES8 (Nave)
Festival Spiegeltent, Canterbury Coach Park	2pm - p.29 Baby Loves Disco 8.30pm - p.3 The Christians	11am - p.3 Festival Chamber Orchestra 2.30pm - p.21 Ceilidh 8pm - p.4 The Sammy Rimington International Band		2pm - p.29 Ensonglopedia of Animals 8.30pm - p.5 Tom Robinson with support from Lee Forsyth-Griffiths	2pm - p.29 Sound Hunt 7.30pm - p.21 Slightly Fat	2pm - p.29 Slightly Fat Features Children's Show 7pm - p.22 Scottish Falsetto Sock Puppet Theatre 9.30pm - p.8 Mampama	2pm - p.30 Greek Myths 7pm - p.22 Le Gateau Chocolat 9.30pm - p.8 Mamas Gun	2pm - p.30 Children are Stinky 7pm - p.23 Etienne & Friends 9.30pm - p.8 Club Click
Shirley Hall, The King's School			8pm - p.35 Alice Roberts		7.30pm - p.5 Elégie (A Heart in Exile)			7.30pm - p.35 Doug Allan
St Mary's Hall Studio Theatre	7.30 - p.21 Magic Circle						7.30pm - p.23 The Time Machine	
St Gregory's Centre for Music			7.30pm - p.5 The Bursary Competition	1.10pm - p.18 The Lunaire Quartet	1.10pm - p.18 David Knotts and Sam Corkin	1.10pm - p.18 Kentish Piano Trio		
Cathedral Lodge			5.45pm - p.32 Luke Harding	5.45pm - p.32 Pat Davies & Simon Robinson 8pm - p.36 The Denial of Death	5.45pm - p.32 Mark Austin 8pm - p.22 Nick Coleman	5.45pm - p.33 Hilary Kay 8pm - p.22 Adam Kay	5.45pm - p.33 John Suchet	
Other venues	City Centre from 11am onwards - p.28 Opening Day Celebration St Dunstan's 1pm - p.2 Canterbury Gregorian Music Society	Colyer-Fergusson 3pm - p.20 Hansel & Gretel	Anselm Studio 1 1.10pm - p.18 Automatronic: New Music for Organ and Electronics				Anselm Chapel 1.10pm - p.18 Contact	Stacey Lab (University of Kent) 2pm - p.37 Agar Art
Walks	10am - p.42 Area of Outstanding Natural Beauty 10am - p.42 The Geology of Herne Bay 2.30pm - p.42 Canterbury's Gruesome Tales	8.30am - p.42 Birdwatching Walk 11am - p.42 The Materials and History of Buildings 2pm - p.42 Victorian City: Splendour and Squalor	10am - p.42 Frontline Folkestone 2pm - p.42 Canterbury's Medieval Hospitals	10am - p.42 Tales of Medieval Travellers 11am - p.42 Guided Tour of Chilham Castle Gardens and House 2pm - p.42 Christ Church Priory's Water Supply	9.45am - p.42 St Martin's and Beyond 10am - p.43 Canterbury's Medieval Friaries 2pm - p.43 The Village of Bridge 2.30pm - p.43 St Mildred's - Gardens Saints and Industry	10am - p.43 Faversham: The King's Port 10.30am - p.43 Herne - My Patch 2pm - p.43 A Walk in and about St Augustine's College	10am - p.43 The Director's Walk 10am - p.43 From Hollywood to Fascism	10am - p.43 Country Paths a Stone's Throw from the City 2pm - p.43 Historic Charing and its Church
	Key Music	Performance	Family Friendly	Talks	Science	Walks		

WEEK 2	Sunday 28 October	Monday 29 October	Tuesday 30 October	Wednesday 31 October	Thursday 1 November	Friday 2 November	Saturday 3 November
Canterbury Cathedral							7.30pm - p.16 Canterbury Choral Society: Hymn of Praise (Nave)
Festival Spiegeltent, Canterbury Coach Park	11am - p.12 Fourtouna 2.30pm - p. 23 South American Way 8pm - p.11 Good Gnus		1pm - p.17 Kent College School Concert 8pm - p.11 Embraceable Ella	1pm - p.17 Simon Langton School Concert 8.30pm - p.13 Jamie Smith's MABON (Wales)	1pm - p.17 Canterbury Academy School Concert 7pm - p.25 Shift, Barely Methodical Troupe 9.30pm - p.26 Lady Luck Cabaret	1pm - p.17 Canterbury College School Concert 7pm - p.25 Shift, Barely Methodical Troupe 9.30pm - p.26 Lady Luck Cabaret	10.30am - p.17 Primary School Showcase 6pm - p.25 Shift, Barely Methodical Troupe 8.30pm - p.16 YolanDa Brown Closing Party! (p.16)
Shirley Hall, The King's School	7.30pm - p.11 Journey Through Conflict: From Then Until Now	7.30pm - p.12 Melvyn Tan	7.30pm - p.13 The King's Singers	7.30pm - p.26 Simon Evans	7.30pm - p.14 Close to You		7.30pm - p.27 Seann Walsh
St Mary's Hall Studio Theatre		7.30pm - p.24 A Regular Little Houdini	7.30pm - p.31 Made In Kent: Dance	7.30pm - p.24 Michael Pennington: Sweet William	7.30pm - p.31 Made In Kent: Theatre	7.30pm - p.27 Shackleton's Carpenter	2pm - p.37 Monsters That Might Be
St Gregory's Centre for Music		1.10pm - p.18 Canterbury Festival Maxwell Davies Memorial Prize	1.10pm - p.18 Trio 'Manor Manouche'	1.10pm - p.18 University String Orchestra and Top Voices	1.10pm - p.18 Christ Church University Big Band		
Cathedral Lodge		5.45pm - p.33 Anthony Warner in conversation with Xanthe Clay 8pm - p. 24 Robin Ince	5.45pm - p.34 David Starkey	5.45pm - p.34 Pierre-Emmanuel Taittinger	5.45pm - p.34 John Tusa 8pm - p.35 Ptolemy Dean	5.45pm - p.34 William Palin	
Other venues	The Ballroom 3pm - p.31 Track Record	Lanfranc Theatre, Canterbury College 8pm - p.31 Made in Kent: Comedy Final				1.10pm - p.18 Anselm Studio 1 Dance @ Canterbury: Re-mix Colyer-Fergusson Hall 7.30pm - p.14 Trio HLK + Evelyn Glennie	
Walks	2pm - p.43 An Armchair Tour of Canterbury	10am - p.43 Exploring King's School	10am - p.43 Strangers in Canterbury 10am - p.43 The River Bridges, Waterways, and Mills of Canterbury 11am - p.44 Canterbury Rings Walk: The Fordwich Dragon	10am - p.44 Introductory Tour of the Dover Western Heights 2pm - p.44 A Literary Tour of King's School	10am - p.44 Made in Canterbury 10am - p.44 Little Stour, Big Skies 10am - p.44 Blitzed Bits	10am - p.44 The Roof Lines of Canterbury	10am - p.44 The Story of Canterbury 10am - p.44 Goodnestone and Chillenden Walk 11am - p.44 Guided Tour of Chilham Village and St Mary's Church
	Key	Music	Performance	Family Friendly	Talks	Science	Walks

Access

A full access guide can be downloaded from the Festival website that includes venue photos, seating descriptions and details of steps. A paper copy can be requested from the Festival Office by contacting Liz on 01227 452853 or info@canterburyfestival.co.uk

Please note, due to building work, the Cathedral venues are unable to provide blue badge parking. Closest drop off will be The Buttermarket and closest blue badge parking will be on Orange Street.

Please note that there is no parking on the Spiegeltent site.

The Ballroom
15 Orange Street
CT1 2JA
Not suitable for
wheelchair users.
Bar on site.

Canterbury Cathedral
The Precincts
CT1 2EH



Canterbury Cathedral Lodge
The Precincts
CT1 2EH
Bar on site.



Cathedral Chapter House
The Precincts
CT1 2EH
Access via the Great Cloister.



Colyer-Fergusson Hall
University of Kent
CT1 7NB
Free parking after 5pm
weekdays and all weekend.
Bar and restaurant on site.



St Dunstan's Church
St Dunstons St
CT2 8LS
Free car park.



St Gregory's Centre for Music
North Holmes Road
CT1 1QU
Free car park.



Lanfranc Theatre
Canterbury College
New Dover Road
CT1 3AJ
Free car park.
Bar on site.



Marlowe Theatre
The Friars
CT1 2AS
Bar and restaurant on site.



St Mary's Hall Studio Theatre
The Borough
CT1 2EZ
No late admittance after
show has started.



Shirley Hall, The King's School
Through Mint Yard,
The Borough
CT1 2EZ
Limited parking for Blue Badge
holders only.
Communal wheelchair
available for use. Bar on site.



Stacey Building, University of Kent
CT2 1NJ
Free parking after 5pm weekdays
and all weekend



Spiegeltent
Canterbury Coach Park
Kingsmead Road
CT1 1BW
No parking on site.
Bar and food stalls on site.
Food may be consumed in
Hospitality Tent.



Big Day Out

Whether you're visiting during the Festival, or any other time of the year there is so much to do in and around Canterbury. Spend an afternoon sampling wines at a local vineyard or view the City from the River Stour on a boat tour. Feel the thrill of being locked in a medieval tower or travel back in time to Chaucerian Canterbury. Here are a few highlights that could complement your cultural itinerary this October.

For more information visit canterburyfestival.co.uk



Canterbury Historic River Tours

Based on the King's Bridge
opposite Eastbridge Hospital
Canterbury
Tel: 07790 534744
canterburyrivertours.co.uk
info@canterburyrivertours.co.uk

Discover Canterbury's fascinating history while enjoying views of the city's finest architecture and hidden areas of natural beauty. National Tourism Award Finalists 2016 and European Tourism Winners 2017.



Canterbury Tales

St. Margaret's Street
Canterbury
CT1 2TG
Tel: 01227 696001
canterburytales.org.uk
info@canterburytales.org.uk

Enjoy a charming journey through Chaucer's famous Canterbury Tales. For full details of additional events and special offers, visit the venue's website.



Betteshanger Park

Sandwich Road
Deal
CT14 0BF
Tel: 01304 619227
betteshanger-park.co.uk
info@betteshangerparks.co.uk

Betteshanger Park guarantees an energising and enjoyable day out. The Park offers miles of traffic-free cycling plus a programme of lively outdoor events and activities, including a season of open air cinema.



Canterbury Tourist Guides

Christ Church Gate
The Precincts, Canterbury
CT1 2EE
Tel: 01227 459779
canterburyguidedtours.com
guides@canterburytouristguides.co.uk

The heart of Canterbury can be explored only on foot, so why not join our 90-minute daily tour to discover more about its historic, cultural and artistic heritage. Tours depart daily from The Buttermarket.



Chartham Vineyard

Burnt House Farm
Station Road, Chartham
CT4 7EA
Tel: 01223 813709
charthamvineyard.co.uk
info@charthamvineyard.co.uk

Open Saturdays 10.30-5.30. Wine shop, free tastings, gallery, demonstration vineyard, bookable vineyard tours. Unique visitor experience in historic farmyard by Chartham Station, just off A28, 3 miles SW of Canterbury.



Escape In The Towers

The Pound & Westgate Towers
Canterbury
CT1 2BZ
Tel: 01227 458629
escapeinthewtowers.co.uk
escape@onepoundlane.co.uk

Packed full of fun and adrenaline you and your cohorts have just 60 minutes to escape Dr Wellington's Crime & Punishment Lab by solving clues and puzzles. Based in Canterbury's former city gaol!



Godinton House & Gardens

Godinton Lane
Ashford
TN23 3BP
Tel: 01233 643854
godintonhouse.co.uk
info@godintonhouse.co.uk

Enjoy a tour of this delightful Jacobean house. Explore the 12 acres of beautiful gardens and parkland complete with tearoom serving homemade cakes. Free parking. Events throughout the year.



Howletts Wild Animal Park

Bekesbourne Lane
Bekesbourne
Nr Canterbury CT4 5EL
Tel: 01227 721286
aspinallfoundation.org/howletts
info@aspinallfoundation.org

Howletts offers a wild day out like no other! Discover some of the world's most endangered animals, including the largest herd of African elephants in the UK.



The Kent Museum of Freemasonry

St Peter's Place, Canterbury
CT1 2DA
Tel: 01227 785625
kentmuseumoffreemasonry.org.uk
masonicmuseum@btinternet.com

A rare, fascinating and educational collection of exhibits of both national and international importance. One of the finest collections of Masonic material in the UK.



Wildwood Discovery Park

Canterbury Rd,
Herne Common, Herne Bay
CT6 7LQ
Tel: 01227 712111
wildwoodtrust.org
info@wildwoodtrust.co.uk

Set in 40 acres of ancient woodland, Wildwood holds a stunning collection of over 200 British animals in natural enclosures including bears, wolves and otters.

Big Eat Out

Whether you're looking for a long lunch or a quick pre-show bite, this is the perfect opportunity to celebrate the delicious cuisine that the City's restaurants have on offer.

Please contact the restaurants directly for further information on booking conditions, opening hours and mention Canterbury Festival to enjoy one of the meal deals listed.



Image © Brooke Lark

2 course set menu for £19.50

The Parade Room

1 Pound Lane
CT1 2BZ
Tel: 01227 458629
onepoundlane.co.uk

2 course set menu for £12.95

A La Turka

15 St Dunstan's Street
CT2 8AF
Tel: 01227 639102
ala-turka.co.uk

Il Posticino

61 Dover Street
CT1 3HD
Tel: 01227 788022
ilposticino.co.uk

2 course set menu for £12

The Thomas Becket Pub

21 Best Lane
CT1 2JB
Tel: 01227 464384
thomasbecketcanterbury.co.uk

Or try...

Azouma

4 Church Street,
Saint Paul's, CT1 2 DY
Tel: 01227 760076
azouma.co.uk

Oscar & Bentley's

10 Guildhall Street
CT1 2JQ
Tel: 01227 454544
oscar-bentleys.co.uk

2 course set menu for £18

County Restaurant

30-33 High Street
CT1 2RX
Tel: 01227 766266
abodecanterbury.co.uk

Chapter Canterbury

11-12 Burgate
CT1 2HG
Tel: 01227 809198
chaptercanterbury.co.uk

Deakins

1-2 Sun St,
Canterbury, CT1 2HX
Tel: 01227 479111
deakinscanterbury.co.uk

2 course set menu for £10

Posillipo

16 The Borough
CT2 1DR
Tel: 01227 761471
posillipo.co.uk

The Pound Bar & Kitchen

1 Pound Lane
CT1 2BZ
Tel: 01227 458629
onepoundlane.co.uk

Big Sleepover

The Garden of England's idyllic views are a welcome bonus for those visiting the Canterbury Festival. The Big Sleepover lists some of the best hotels, guest houses and holiday lets – check in and enjoy some excellent Kentish hospitality.

For more information visit canterburyfestival.co.uk



ABode Canterbury
30-33 High Street
Canterbury, CT1 2RX
Tel: 01227 766266
abodecanterbury.co.uk
sales@abodecanterbury.co.uk

ABode Canterbury is a stylish boutique hotel that has been beautifully designed. With its central location, it's the perfect place to stay when visiting the city.



Eastwell Manor
Eastwell Park, Boughton Lees,
Ashford, Kent TN25 4HR
Tel: 01233 213000
champneys.com
reservations@eastwellmanor.co.uk

A magnificent country house hotel, the ideal destination for overnight accommodation, fine dining, relaxation and spa days when visiting Kent. Complimentary car parking and Wi-Fi.



Holiday Inn Express
Upper Harbledown
Canterbury, CT2 9HX
Tel: 01227 865000
hiexpresscanterbury.co.uk
reservations@hiexpressctb.co.uk

Room rates include complimentary breakfast, free car parking and Wi-Fi. Children under 18 stay FREE when sharing room with parents. Evening dinner service is available.



Canterbury Cathedral Lodge
The Precincts
Canterbury, CT1 2EH
Tel: 01227 865350
canterburycathedrallodge.org
stay@canterburycathedrallodge.org

Set in beautiful private grounds, guests benefit from stunning Cathedral views from their bedroom window, as well as free entrance to Canterbury's most famous landmark.



The Falstaff
8-10 St Dunstan's Street
Canterbury CT2 8AF
Tel: 01227 462138
thefalstaffincanterbury.com
stay@thefalstaffincanterbury.com

A few minutes' walk from the city centre, the hotel offers 45 en-suite rooms, free Wi-Fi and residents' parking. Or just pop in to try the great cocktails in one of Canterbury's leading bars.



House of Agnes
71 St Dunstan's Street
Canterbury, CT2 8BN
Tel: 01227 472185
houseofagnes.co.uk
reception@houseofagnes.co.uk

Award-winning 15th Century B&B with 16 beautiful en-suite rooms, cosy lounges, bar and large peaceful garden. Based in the city centre with free parking and Wi-Fi.

If you would prefer the comfort of hiring an entire property for your stay, why not try:



Bramley & Teal
5 The Quay, Bideford
EX39 2XX
01580 232255
bramleyandteal.co.uk/kent-cottages
info@bramleyandteal.co.uk

With over 100 properties across Kent and Sussex, Bramley & Teal offer the perfect self-catering getaway on the south coast.



Mulberry Cottages
17 New Dover Road,
Canterbury, CT1 3AS
Tel: 01227 464958
mulberrycottages.com
info@mulberrycottages.com

Have the city on your doorstep. Mulberry Cottages offer a lovely selection of self-catering holiday houses both in and around Canterbury.



Kent & Sussex Holiday Cottages
12 King Street
Sandwich, CT13 9BT
Tel: 01580 720770
kentandsussexcottages.co.uk
info@kentandsussexcottages.co.uk

Gorgeous properties in great locations, from cottages to townhouses, there is something to suit every taste and budget. Call the friendly local team to book your break.



holidaycottages.co.uk
5 The Quay, Bideford
EX39 2XX
Tel: 01237 459888
holidaycottages.co.uk/kent
info@holidaycottages.co.uk

Holidaycottages.co.uk offers a beautiful selection of properties across Kent perfect for families, large groups and couples. Dog-friendly cottages available.



The Festival is indebted to the Foundation Board and Friends Committee for their on-going dedication to fundraising.



Festival Foundation

The Canterbury Festival Foundation supports the long-term development of the Festival, and awards Bursaries to young musicians in Kent.

If you value the Arts in Kent and are thinking of making or amending your Will, please consider leaving a Legacy to the Foundation (charity no. 1097824).

JOIN THE FRIENDS AND FEEL THE BENEFITS

Did you know that the Friends of Canterbury Festival receive two weeks priority booking before the Festival tickets go on general sale? Friends can also buy discounted tickets for selected shows and receive last minutes deals, all for a modest subscription.

For £25 for a single, £35 for a couple and £40 for a family you can buy priority tickets for your favourite shows and receive the special Friends discounts and offers.

To enjoy these benefits, and much more throughout the year, you can join the Friends by contacting Tina on tina@canterburyfestival.co.uk, 01227 452853

For more information see the Friends pages on the Festival website or contact the Festival Office.

VOLUNTEERS

We are most grateful to our wonderful team of volunteers who work as stewards, programme sellers and bar staff during the Festival period. Without them, it would be impossible for us to produce the annual Festival.

If you would like to join the volunteering team, contact Tina on tina@canterburyfestival.co.uk

Patron

The Very Revd Dr Robert Willis,
Dean of Canterbury

President

Peter Williams MBE

Vice Presidents

Anonymous
Brigadier and Mrs Maurice Atherton
Professor Stephen Bann
Mrs James Bird
Mr Timothy Brett
Mr and Mrs Graham and Maggie Brown
Mr and Mrs Martin and Virginia Conybeare
Dr Kate Neales and Mr Peter Cox
Cllr and Mrs Nick and Monica Eden-Green
Mrs Jane Edred Wright
Mr and Mrs Alan and Diana Forrester
David and Cilla Freud
Mr and Mrs Charles and Diane Gaskain
Mrs Romy de Gelsey
Mr and Mrs Peter and Sally Hawkes
Mr and Mrs Peter and Brenda Hermitage
Mr Andrew Ironside
Mr and Mrs George and Christine Kennedy
Mr and Mrs Roddy and Caroline Loder-Symonds
Mr and Mrs James and Jane Loudon
Mr and Mrs David and Mimi Macfarlane
Mr and Mrs Ian and Juliet Odgers
Mr Richard Oldfield
Mr and Mrs David and Alicia Pentin
Jane Plumptre
Mr and Mrs John and Julia Plumptre
Mr and Mrs Paul and Patricia Smallwood
Dr David Starkey CBE
Mr and Mrs Michael and Sue Stanford-Tuck
Mr and Mrs Peter and Beryl Stevens
Mr Richard Sturt OBE
Mrs Fiona Sunley
Lady Swire
Mrs Camilla Swire
Lady Juliet Tadgell
Mrs Jo Taylor Williams
Mrs Loba Van der Bijl
Mr and Mrs Charles and Sally Villiers
Mr Stuart Wheeler
Sir Robert and Lady Worcester KBE
Mr and Mrs Evelyn and Scilla Wright

Platinum Supporters

Professor Keith Mander
Simon Backhouse

Trustees

<i>Chairman</i>	Prof Keith Mander
<i>Treasurer</i>	Hugh Summerfield
<i>Company Secretary</i>	Dr Kate Neales
Cdre Martin Atherton OBE	Dr Dan Lloyd
Hugo Barton	Roddy Loder-Symonds
Colin Carmichael	Anthony Pratt
Celia Glynn-Williams	Camilla Swire
Peter Harris	Tony Walder
Peter Hermitage QPM	Dr Gillian Youngs
Andrew Ironside	

Hon Solicitor

Tim Townsend, Gardner & Croft

Festival Administration

<i>Festival Director</i>	Rosie Turner
<i>Development & Spiegeltent Manager</i>	Amanda McKean
<i>Marketing Manager</i>	Liz Moon
<i>Participation Manager</i>	Charlotte Chapman
<i>Programme Co-ordinator</i>	Kylie Sanderson
<i>Administrator</i>	Tina Austen
<i>Business Manager</i>	Alison Mannerling
<i>Production</i>	Mark Stampe

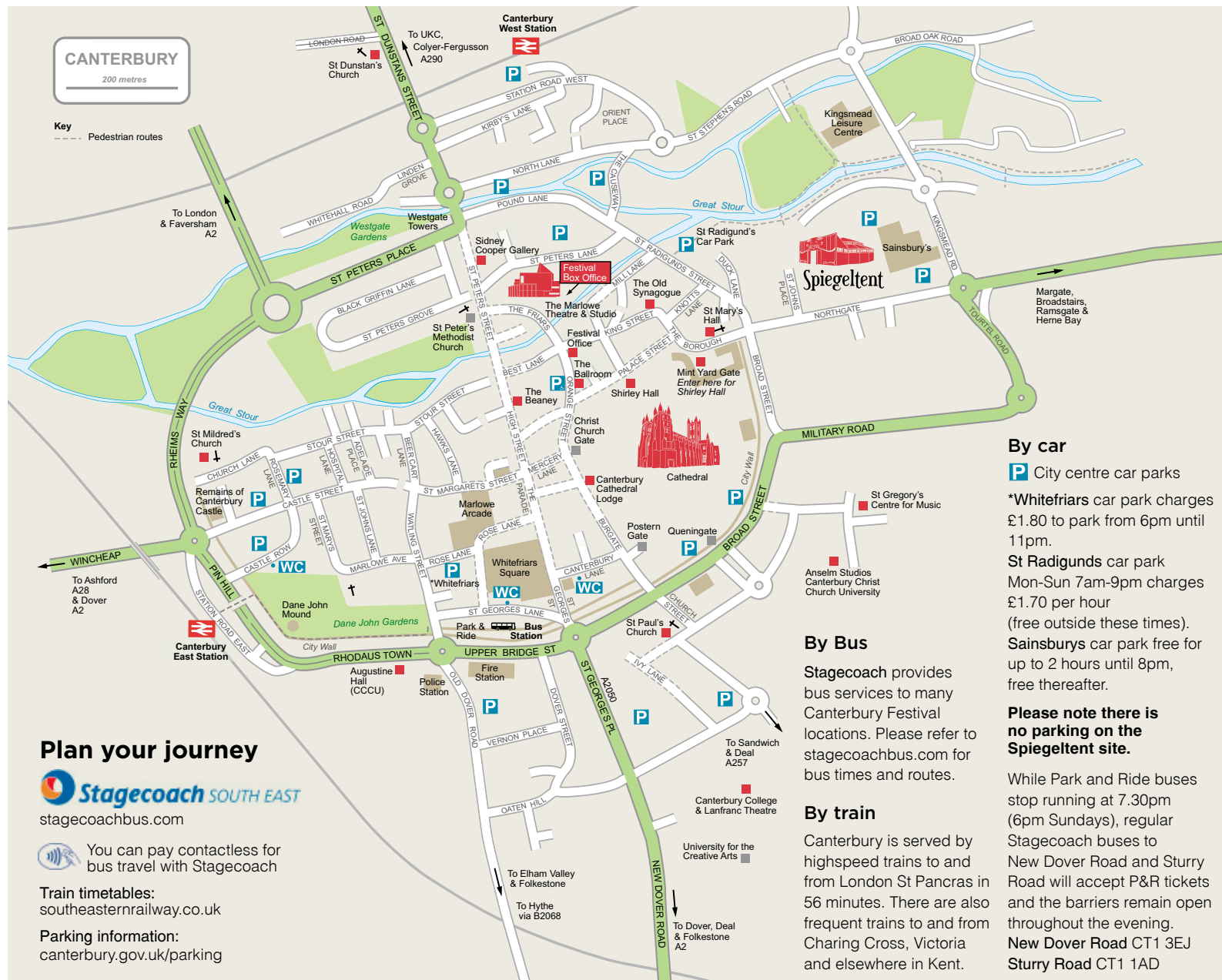
<i>Cover & Brochure Design</i>	nebulodesign.com
<i>Front cover lino print:</i>	edyandfig.co.uk

Canterbury Festival
(Trading name of Canterbury Theatre and Festival Trust)
Registered in England No. 1480595
Registered Charity No. 279714



Please consider the environment and
recycle your brochure after use.





HOW TO BOOK TICKETS

PRIORITY BOOKING FOR FRIENDS

OPENS MONDAY 16 JULY

GENERAL BOOKING

OPENS MONDAY 30 JULY

ONLINE*

canterburyfestival.co.uk

For secure online booking of all Festival events, available 24 hours a day, visit our website.

BY PHONE*

Festival Box Office 01227 787787

The Festival Box Office will accept telephone bookings Mon-Sat 9am-6pm, plus Sun 21 and 28 October 11am-5pm. Reservations are provisional until payment is received and are released after 4 working days, please quote your booking reference when paying.

IN PERSON*

The Festival Box Office, located in the Marlowe Theatre, is open Mon-Sat 9am-6pm, plus Sun 21, 28 October, 5.30-8pm

BY POST*

All events can be booked on this form, which must be returned to the Festival Box Office at least one week prior to the event. Tickets will be dispatched within one week of receipt.

Festival Box Office, The Marlowe Theatre, The Friars, Canterbury, Kent, CT1 2AS

BOOKING FEES

The Marlowe Theatre charge a booking fee of £1.25 per ticket, which is included in all ticket prices listed within the brochure. This is an unavoidable administration cost and no proceeds go to Canterbury Festival.

BOX OFFICE CONTACT DETAILS

Festival Box Office

The Marlowe Theatre
The Friars, Canterbury
Kent, CT1 2AS
Tel: 01227 787787

Open: Mon-Sat 9am-6pm
Also open Sun 21 and 28 Oct
By phone 11am-5pm
In person 5.30-8pm

canterburyfestival.co.uk

Colyer-Fergusson Hall events only

University of Kent
Canterbury
Kent, CT2 7NE
Tel: 01227 769075

Open: Mon-Sat from 10am
Sun from 5.30pm
(2pm if a matinee)

thegulbenkian.co.uk

St Gregory's Centre for Music and Augustine Hall events only

Augustine House, Rhodas Town
Canterbury, CT1 2YA
Tel: 01227 782994

Open: Mon-Thurs
10am-12.30pm, 1.30-4pm
July and August only:
10.30am-12.30pm, 2-4pm

canterbury.ac.uk/arts-and-culture

Concessions

Concessions, where applicable, are detailed in the ticket price sections of each event listing. Proof of status may be required.

Access

The Festival aims to provide excellent access for our visitors. We are, however, restricted by the design of some of the older buildings meaning that our venues have varying levels of accessibility. An access overview can be found on p.53 and a full access guide including venue description and seating images can be downloaded at canterburyfestival.co.uk. Alternatively contact Liz at the Festival Office to discuss your access needs on 01227 452853 or info@canterburyfestival.co.uk.

The Festival cannot accept responsibility for the accessibility of Exhibitions, Artists' Open Houses trails and Umbrella events.

Refunds & Exchanges

In unavoidable circumstances Canterbury Festival reserves the right to alter artists or programme content. Unfortunately, tickets cannot be exchanged or money refunded.

Your Visit to the Festival:

Visitor Information Centre:

Beaney House of Art & Knowledge,
18 High Street, Canterbury, CT1 2BD
Tel: 01227 862162
canterbury.co.uk

Venue Map: See p.58 for venue locations and transport links

Train travel with Southeastern: southeasternrailway.co.uk

Bus travel with Stagecoach: stagecoachbus.com

The Big Day Out: Between Festival events, there's plenty to keep you busy, see p.54

The Big Eat Out: Take a moment to explore the Festival's restaurant guide on p.55

The Big Sleepover: For Festival recommendations on places to stay, visit p.56

CANTERBURY FESTIVAL 2018 BOOKING FORM

Page No.	Venue	Date	Time	Event Title	Price per ticket	No of full price seats	No of conc seats	Total £

Name

Address

Postcode

Telephone*

Email

☐ Please tick here if you would like to hear from The Canterbury Festival about future events and activities.

The information you submit on this form will be used by The Marlowe to process your booking for The Canterbury Festival. Your data will be held and processed by The Marlowe for booking purposes and no others.

You can also subscribe, unsubscribe or tailor your contact preferences at any time by logging into the website and visiting canterburyfestival.co.uk/maillinglist.

Please read our Privacy Policy at canterburyfestival.co.uk for further information on how we use your data.

The Marlowe's data policy (the organisation which is processing your ticket payments) can be found at: marlowetheatre.com

Sub Total	
Add Postage (£1)	
Please consider making a donation to our year-round activities	
GRAND TOTAL	£

HOW TO PAY

☐ **Cheque** Please enclose an open signed cheque payable to Marlowe Theatre (with upper payment limit in the top left corner and all other areas blank).

☐ **Card** If you wish to pay by Mastercard/Visa/Switch/Delta please tick this box and ensure you have included a phone number in the contact section*. A member of the Box Office will call you to take payment.

Return your completed Booking Form to:

Festival Box Office, The Marlowe Theatre, The Friars, Canterbury, CT1 2AS

☐ If you would like your tickets posted to you please tick this box. If you DO NOT tick this box your tickets will be held at the Box Office for collection

☐ If your first choice is unavailable, would you like us to book the next available ticket price? Please tick this box.



The Canterbury Auction Galleries

FINE ART
AUCTIONEERS
SINCE 1911



Important Chinese bronze tripod water vessel (or Tiger Ying)
10.25 ins high, Late Western Zhou (1100 - 771 BC)

Provenance - Captain H.L. Evans - Acquired Peking, October 1860

Discovered in a family home near Canterbury - Thoroughly Researched,
Extensively Promoted across the World and Sold here in Canterbury to a
Chinese Buyer for **£410,000** (Setting a New Auction House Record)

ESTABLISHING OUR NEW AUCTION HOUSE RECORD

Your **Local Auction House** with a
International Professional Reputation
but still retaining that Discreet and
Personal Touch

Bi-Monthly Two Day Specialist Auctions of Fine Art
& Antiques, Silver & Jewellery, Coins & Medals,
Objet d'Art, Clocks & Antique Furniture

FREE Valuation Mornings every **Friday 10am to 1pm**
Home Visits for larger Collections across the County

Please contact one of our Directors
Tony Pratt ASFAV, **Cliona Kilroy** MRICS
or **David Parker** BSc (Hons)

40 Station Road West
Canterbury, Kent
CT2 8AN

01227 763337

thecanterburyauctiongalleries.com

THE CANTERBURY AUCTION GALLERIES PROUD TO BE SPONSORING THE CANTERBURY FESTIVAL FOR THE PAST 15 YEARS