



# CANTERBURY FESTIVAL 2019

KENT'S INTERNATIONAL ARTS FESTIVAL

19 OCT - 2 NOV

Celebrating 10 years as  
Partner and Principal Sponsor



[canterburyfestival.co.uk](http://canterburyfestival.co.uk)

## FESTIVAL DIRECTOR

Every year I encourage you to enjoy the Festival. But – apart from those of you whom I know personally – my team and I have little idea of who you are. We would like to know you better! This year – to offer you a more personalised service, and to tailor future Festivals to your likes (and dislikes!) – we will be operating our own Box Office. Please register at [canterburyfestival.co.uk](http://canterburyfestival.co.uk) as soon as you read this, so that booking your tickets on-line will be smooth and straightforward. I promise we will not bombard you with hard-selling emails or masses of leaflets through the post. We will simply become more aware of the shows you attend and be able to contact you directly in the event of any changes to the programme. It's simple to book on-line but we crave your patience if you are telephoning us or visiting the office... we are learning on the job! Tickets for all Festival shows at The Marlowe will continue to be sold *only* at The Marlowe – and we thank the theatre for the many years of excellent service they've given us. Full details of Box Office arrangements are on Page 57.

And so, we proudly present the line-up for 2019 – our first without core funding. The new Box Office, the efforts of our donors, our sponsors – particularly Canterbury Christ Church in their 10th year – and yourselves as customers all contribute to the financial sustainability of our charity. As you may know, any surplus we make is invested in free community activities, developing the talents of young people, and enhancing Canterbury's cultural reputation. Please come – come often – and enjoy!

See you there!

**Rosie Turner**  
Festival Director



## PARTNER AND PRINCIPAL SPONSOR



Celebrating 10 years as  
Partner and Principal Sponsor



Canterbury Christ Church University is delighted to work with Canterbury Festival in 2019, particularly as we celebrate 10 years

of collaboration. As Partner and Principal Sponsor we are pleased to be associated with such a prestigious and popular event.

Canterbury Festival plays an important role in the city's excellent cultural programme and the UK festival calendar. It brings together the people of Canterbury, visitors, and international artists in an annual celebration of arts and culture, which contributes to a prosperous and vibrant city. This

year's Festival promises a rich, varied and inclusive programme for everyone to enjoy.

The University is passionate about, and contributes significantly to, the region's creative industries. We work closely with a range of local and national organisations to offer an artistically vibrant, academically inspiring and socially engaging arts and culture programme within the community, and recently opened the new Daphne Oram building for the creative arts. We offer a range of campus events throughout the Festival and we look forward to welcoming you this year.

**Professor Rama Thirunamachandran**  
Vice-Chancellor and Principal  
Canterbury Christ Church University

## PARTNER & PRINCIPAL SPONSOR

Celebrating 10 years as  
Partner and Principal Sponsor



## SPONSORS



Venue Sponsor



Technical Sponsor



CLAGUE ARCHITECTS



## TRUSTS AND SUPPORTERS

The John Swire 1989 Charitable Trust  
Peter Stevens  
Canterbury Festival Foundation  
Kent Community Foundation  
Lady Swire  
Todd's The Wine Company  
Angela Duignan  
The Hale Trust

## HEADLINE SPONSORS



## CORPORATE MEMBERS

Abbott Construction  
Airhedz.co.uk  
Bang & Olufsen of Canterbury  
BO Concept  
Burgess Hodgson  
Canterbury Christ Church University

Coombs (Canterbury) Ltd  
Crowthers of Canterbury  
Darwin Escapes  
Furley Page  
Handelsbanken  
Hearbase

Holiday Inn Express Canterbury  
Jackson-Stops & Staff  
Kent Recruitment Bureau  
Lenleys  
PG Lemon LLP  
Red Key Concepts

Sennet Insurance  
Tim Stubbings  
Photography  
Whitehead Monckton  
YMS Group

## FUNDERS



## Contents

|                           |       |
|---------------------------|-------|
| Spiegeltent Spectacular   | 1     |
| Music                     | 2-21  |
| Performance               | 23-28 |
| Talks                     | 30-33 |
| Science                   | 34-35 |
| Opening Day               | 36    |
| Family Friendly           | 37-38 |
| Visual Arts               | 39-40 |
| Artist Open Houses        | 40    |
| Foundation Events         | 41    |
| Walks                     | 43-45 |
| Umbrella                  | 46-48 |
| Made In Kent              | 49    |
| Big Eat Out & Big Day Out | 51    |
| Big Sleepover             | 52    |
| Thanks                    | 54    |
| Support Your Festival     | 55    |
| Map                       | 56    |
| How to Book               | 57    |
| Venue Access Guide        | 58    |
| Events Diary              | 59-60 |

## Genre Key



Canterbury Festival is proud to be a member of the British Arts Festivals Association.  
artsfestivals.co.uk

# Festival Box Office new for 2019!

This year we are very excited to launch our own Box Office and brand new website! Tickets for the majority of events will now be bookable directly through the Festival, so please do **sign up** and **join our mailing list** to keep up to date – just visit [canterburyfestival.co.uk](http://canterburyfestival.co.uk). You can also book tickets over the phone on **01227 457568** or in person at **Festival House, 8 Orange Street, Canterbury**. For full details including Box Office opening hours please turn to p.57.

To book tickets for Festival events taking place at The Marlowe, please contact The Marlowe Box Office on 01227 787787.



Keep up to date by liking and following @canterburyfest

# Spiegeltent Spectacular

**Friday 18 October, 7.45pm**  
Spiegeltent  
Tickets £36.50

Roll up, roll up for a sparkling evening of Spiegeltent fun - Canterbury Festival's fundraising Spiegeltent Spectacular!

Brought to you on Festival Eve to celebrate the start of Canterbury Festival 2019, the evening also serves to help raise much needed funds to enable us to bring the beautiful Salon Perdu back to Canterbury.

The evening starts with a welcome drinks reception in the hospitality tent, followed by an hour of the best cabaret, comedy and circus with a mystery finale not to be missed. With an auction of promises and dancing to the KD Jazz and Soul Orchestra, this will surely be the social event of the year.

Booths of 8 to 10 are available to reserve at the time of booking. We look forward to seeing you there!

Sponsored by

**Paul Roberts**

Headline Sponsor

Supported by

**Todd's**  
The Wine Company



# The Sixteen: Monteverdi Vespers of 1610

Saturday 19 October, 7.30pm

Cathedral Nave

Tickets £32.50, £28, £23, £18

Harry Christophers

Katy Hill, Charlotte Mobbs

Jeremy Budd, Mark Dobell

Ben Davies, Robert Davies

Conductor

Soprano

Tenor

Bass

A stunning opening to the Festival by the fabulous ensemble, The Sixteen Choir and Orchestra performing one of the most magnificent pieces in the classical repertoire, Monteverdi's *Vespers of 1610*.

Expect thrilling rhythms, grand choruses and beautiful solo movements ideally suited to the acoustics of the Cathedral Nave.

Conductor Harry Christophers says:

'The Vespers is one of the most significant collections of sacred music ever written. We will follow Monteverdi's dictum recitar cantando – speak through singing – to maximum effect, bringing this glorious work to life.'

'I was hooked,  
flipped upside down,  
dazzled'

★★★★★ (*The Arts Desk*)

Celebrating 10 years as  
Partner and Principal Sponsor



Canterbury  
Christ Church  
University

'...these musicians achieved a magical balance  
between the extroversion of performance  
and the introspection of prayer'

★★★★★ (*Financial Times*)

Box Office: 01227 457568 | [canterburyfestival.co.uk](http://canterburyfestival.co.uk)



## Los Pacaminos

### Featuring Paul Young

**Saturday 19 October, 8.30pm**  
Spiegeltent  
Tickets £22.50

Los Pacaminos features Paul Young, Drew Barfield, Mark Pinder, Steve Greetham, Jamie Moses and Melvin Duffy (UK's premier pedal steel player).

One of the UK's most popular live touring bands, Los Pacaminos play the very best in Tex Mex Border music from The Texas Tornadoes and Ry Cooder to Los Lobos and even Roy Orbison.

This is a Tequila-fuelled Tex Mex party night, as the Spiegeltent becomes the perfect cantina setting for a great night's rocking with the cactus sharp, stetson wearing, magnificent 6, Los Pacaminos!

Sponsored by



Box Office: 01227 457568 | [canterburyfestival.co.uk](http://canterburyfestival.co.uk)



## FB Pocket Orchestra

**Sunday 20 October, 7.30pm**  
Spiegeltent  
Tickets £15.50

Working backwards from the 1930s, the FB Pocket Orchestra explores repertoire that gave birth to what is now known as popular music. With elements of blues, ragtime, hot jazz and more, the FB Pocket Orchestra's cool, atmospheric and vibrant sound brings to life music from the late 19th and early 20th centuries with a confident, contemporary slant.

Sponsored by



## Rock Choir

**Sunday 20 October, 11am**  
Spiegeltent  
Tickets £11.50

Rock Choir is the UK's leading amateur contemporary choir with 30,000 members and over 300 choirs across the UK and is for anyone who loves to sing. No previous experience is necessary and there are no auditions. Rock Choir members from Canterbury will be performing a lively and diverse repertoire; from Queen to *The Greatest Showman*!

## Festival Evensong

**Sunday 20 October, 3.15pm**  
Cathedral Quire

A special Evensong service free to attend in which the Cathedral community blesses and celebrates the work of the Canterbury Festival.





“One of the must-see events  
of the musical calendar”

(BBC Music Magazine)

# I, Clara

## Clara Schumann – A Life in Music

**Sunday 20 October, 7.30pm**

Shirley Hall, The King's School

Tickets £21.50, Students £13.50

**Lucy Parham**      **Piano**  
**Juliet Stevenson**   **Narrator**

Pianist Lucy Parham's meticulously researched Composer Portraits are always a Festival highlight. This brand-new show, *I, Clara* celebrates the extraordinary life of Clara Schumann – devoted wife to Robert and a ground-breaking musician herself - in the year that marks her 200th anniversary.

One of the few famous women composers of her time, Clara was a child prodigy, performed over 1,500 concerts during her lifetime and was the mother of eight children. She composed prolifically in the Romantic style – her music exploring her inner emotional life.

The narrative of *I, Clara*, drawn from letters and diaries, is interspersed with pieces by Clara and Robert Schumann, Brahms, Mendelssohn and Chopin. In the title role, esteemed actress Juliet Stevenson thrillingly conveys Clara's rebellious nature, vivid love life and searing tragedy.

Sponsored by **The King's School**  
Canterbury

Venue Sponsor



‘Of Finghin Collins as soloist, little needs to be said that has not been said before: he is exceptionally fluent, exceptionally intelligent, exceptionally sensitive, responding to every possible nuance...’

*Piers Burton-Page, (International Record Review)*

## Finghin Collins (Piano)

**Tuesday 22 October, 7.30pm**

Shirley Hall, The King's School

Tickets £21.50, Students £13.50

**Mozart Sonata in A major K. 331 Alla Turca**

**Ros Tapestry Suite - a selection**

**Schubert Sonata in A major, D. 959**

One of Ireland's most successful musicians, pianist Finghin Collins brings an exciting programme to Canterbury.

Mozart and Schubert sonatas are accompanied by three pieces from *The Ros Tapestry Suite*, an ambitious project comprising 15 works for solo piano by different Irish composers. The result is a full-bodied, rhythmically exciting musical response to fifteen panels of tapestry embroidery, which trace the history of the Norman invasion of Ireland.



Box Office: 01227 457568 | [canterburyfestival.co.uk](http://canterburyfestival.co.uk)

‘Timeless... a heady mixture of the old-world, sultry class of Julie London and the gritty attitude of Amy Winehouse’

★★★★★ (*Jazz Journal*)

## The Jazz of Judy Garland

Tuesday 22 October, 8pm  
Spiegeltent  
Tickets £18.50

Sara Dowling and the Chris Ingham Trio explore the career and catalogue of Judy Garland - one of Hollywood's brightest yet most troubled stars - in an evening of swing, poignancy and anecdote.

Sara is among the UK's leading jazz vocalists and ideally suited to the role. She is a regular performer at Ronnie Scott's and the 606 Club and is known for her interpretations of classic ballads, and for the energy and vigour with which she tackles the up-tempo standards from the Great American Songbook.

The Chris Ingham Trio are familiar faces at The Spiegeltent and this is their fifth consecutive year backing stars from the world of British Jazz.

Sponsored by  
**TARVOS**  
WEALTH

Box Office: 01227 457568 | [canterburyfestival.co.uk](http://canterburyfestival.co.uk)



‘How soon before it will become normal to think about her as one of the best jazz singers this country has?’

(*London Jazz News*)



## Dom Martin

Wednesday 23 October, 9.30pm  
Spiegeltent  
Tickets £16.50

Dom Martin, a 28-year-old Belfast born singer-songwriter, has recently burst onto the UK scene amid high praise for his debut EP *Easy Way Out*.

A solo artist performing his own material, Martin's finger-style acoustic guitar evokes shades of John Martyn and Richard Thompson, with self-declared blues influences courtesy of Howlin' Wolf and Muddy Waters. Expect the driving rhythms and compelling swing guitar of pieces such as *The Rain Came*.

Dom plays regularly in Northern Ireland, is a BBC Radio 2 live session artist and is BBC Radio 2 and 6 Music play-listed. A rising star - we're lucky to have him here.



# Laura Mvula

Wednesday 23 October, 7.30pm

The Marlowe Theatre

Tickets £42.50, £36.50, £29.50

Tickets for this event are available from  
The Marlowe Box Office only.

Innovative British singer-songwriter, and two-time MOBO award winner, Laura Mvula, visits Canterbury this autumn for a very special Festival performance.

Mvula first sang in church and later with all female a cappella group Black Voices. Since then her career has seen her perform on Glastonbury's Pyramid Stage twice, work with legendary producer and composer Nile Rodgers, and sing as part of The Queen's Birthday Celebrations at The Royal Albert Hall.

Exploring identity, personal dilemmas and social issues, Mvula's 2013 debut *Sing to the Moon* and 2016 follow up *The Dreaming Room*, garnered a multitude of award nominations and received wide-spread critical acclaim.

Discussing her track *Phenomenal Woman*, inspired by Maya Angelou, Mvula told *The Independent*:

"I try and depend a lot on the women that I surround myself with, the women that through their own vulnerability and ridiculous strength are still moving mountains and doing extraordinary things every day."



► Listen at [canterburyfestival.co.uk](http://canterburyfestival.co.uk)

Sponsored by



Events at The Marlowe: Box Office 01227 787787 | [marlowetheatre.com](http://marlowetheatre.com)





# Juan de Marcos' Afro-Cuban All Stars

**Thursday 24 October, 7.30pm**

**The Marlowe Theatre**

**Tickets £35.50, £31.50, £23**

Tickets for this event are available from The Marlowe Box Office only.

Afro-Cuban music is impossible to resist. Bolero, chachachá, salsa, timba and more, tap into the heart of pre-revolutionary Cuban music and bring heat to a chilly Autumn.

Founded in the mid-1990s, the Afro-Cuban All Stars have become a must-see act, performing at venues and festivals across the world and showcasing the talent of Cuba's

musical melting pot. Led by architect of the Buena Vista Social Club, Juan de Marcos González, the band features mainstays of the Havana music scene, alongside a younger generation. Expect songs old and new, as the golden era of Cuban music is revived and refreshed with contemporary sounds and rhythms.

**'a blast of sun-baked  
sultriness and Strictly magic'**

★★★★★ *(The Guardian)*



Events at The Marlowe: Box Office 01227 787787 / [marlowetheatre.com](http://marlowetheatre.com)



▶ Listen at [canterburyfestival.co.uk](http://canterburyfestival.co.uk)



'An exceptional ensemble...  
a unanimous sense of musical  
breath and a meticulous  
attention to detail'

(Musical Opinion)

## Sacconi Quartet

Thursday 24 October, 7.30pm  
Great Hall, Kent College  
Tickets £25, Students £15

Ben Hancox and  
Hannah Dawson  
Robin Ashwell  
Cara Berridge

Violins  
Viola  
Cello

Robin Tritschler

Tenor

Rachmaninov  
Arvo Pärt  
Beethoven  
Dove

Quartet No1  
Romance  
Summa  
Quartet in F minor  
OP 95 Serioso  
In Damascus

The Sacconi Quartet's programme includes Jonathan Dove's *In Damascus* for tenor and string quartet. This song cycle was specially commissioned by the Sacconi Quartet and set to the words of Syrian poet Ali Safar's *A Black Cloud in a Leaden White Sky*, which recounts the stories of everyday life in a war-torn city.

The Sacconi Quartet will be joined by tenor and BBC New Generation Artist, Robin Tritschler. He has appeared with many leading orchestras including the London Philharmonic Orchestra, L'Orchestre National de Lyon, Gulbenkian Foundation Lisbon, Hong Kong Philharmonic Orchestra and the Moscow Virtuosi.

Sponsored by

**HMY** HazleMcCormackYoung LLP/  
Chartered Architects/



## Sardam

Thursday 24 October, 9.30pm  
Spiegel tent  
Tickets £16.50

Alket Marcu  
Tom Pascoe  
Yiannis Zaronis

Accordéon  
Tuba  
Guitar, Vocals and Greek Bouzouki

The music of Sardam is the result of three instrumentalists borrowing sounds from the gypsy musical traditions of Europe and selective genres from around the world, including Greek rebetiko, Argentinian tango and jazz. The trio brings together the music of their native countries (Albania, Greece and the UK) and their shared love for world music; experimenting with original compositions and traditional music from the seven corners of the Earth.



'One of the year's finest world fusion projects'

(UKVibe)



## Classico Latino with Omar Puente

**Friday 25 October, 7.30pm**  
Great Hall, Kent College  
Tickets £21.50, Students £13.50

The award-winning Classico Latino seamlessly blends the techniques and sounds of classical music with authentic Latin American rhythms and melodies.

Performing unique and groundbreaking arrangements of classic sambas, boleros, tangos and other rhythms alongside their own compositions, Classico Latino's performances bring life to the stories and emotions of the continent, in a contagiously exciting sound which expresses the original passion and joy of Latin-American music.

At Canterbury Festival, Classico Latino will be launching their fifth album, *Havana Classic*, which was recorded at the iconic EGREM studios in Havana, Cuba in the summer of 2018. With guest artist Omar Puente joining them tonight, Classico Latino channel the tropical spirit of old Cuba with a unique classical twist.



## Canterbury Gregorian Music Society: Sub Tuum Praesidium

**Saturday 26 October, 1pm**  
St Mildred's Church  
Tickets £11.25

Canterbury Gregorian Music Society presents a lunchtime concert of Gregorian Chant and renaissance polyphony for the Blessed Virgin Mary. The programme includes several well-known Marian chants and other less familiar antiphons such as the 3rd Century *Sub tuum praesidium*. A small group, led by Paul Young sings renaissance settings of the same texts, showing how chant lines were often integrated into the elaborate compositional style of the 16th Century.

The music is punctuated by readings from *Pearl*, the late 14th Century poem about a dream of Heaven, ascribed to the author of *Sir Gawain and the Green Knight*.



# Ward Thomas

Friday 25 October, 7.30pm

The Marlowe Theatre

Tickets £42.50, £36.50, £29.50

Tickets for this event are available from  
The Marlowe Box Office only.

Duo Ward Thomas are leading lights in the UK country scene, alongside the likes of The Shires. As 24 year-old females who have fought their own way to success and as sharp-eyed songwriters who have long looked outwards for inspiration, they tap in to the zeitgeist without even trying.

*Restless Minds*, the follow-up to 2016's chart-topping *Cartwheels*, finds the Hampshire sisters on scorching form.

Observational and opinionated, it documents their coming of age in an era of anxiety and the impact of social media on a generation for which 'the truth' has become a tenuous term. There are songs on the album which touch on women in the workplace and #MeToo, others explore mental health issues and their relationship as twins, growing up and growing apart.



▶ Listen at [canterburyfestival.co.uk](https://canterburyfestival.co.uk)

Sponsored by



Events at The Marlowe: Box Office 01227 787787 | [marlowetheatre.com](https://marlowetheatre.com)





We are **proud** to be a **Headline Sponsor** of the  
**Canterbury Festival**



Development solutions in and around  
Canterbury **since 1984.**

# Jack Savoretti

**Saturday 26 October, 7.30pm**

The Marlowe Theatre

Tickets £46.50, £38.50, £31.50

Tickets for this event are available from  
The Marlowe Box Office only.

We are thrilled to welcome Jack Savoretti to Canterbury Festival celebrating *Singing to Strangers*, his sixth studio album and kicking off his autumn tour. Since the release of *Between The Minds* in 2007, the English-Italian singer-songwriter has been rising to prominence with his unique blend of poetic folk and big-band ballads. Released in March, *Singing to Strangers* has received glowing reviews with hit single *Candlelight* selected as BBC Radio 2's Record of The Week, and the album achieving number one in the charts for six weeks.

Building on the success of his previous two gold discs - *Written in Scars* and *Sleep No More* - Savoretti's newest work explores the musician's heritage, giving thanks and paying homage to the French, Spanish and Italian music of the Fifties and Sixties. With songs co-written with the likes of Bob Dylan and Kylie Minogue, and strings scored by David Rossi (Goldfrapp, Coldplay), *Singing to Strangers* is a unique and beguiling rhapsody, packed full of choral harmonies, sinuous guitar and heartfelt rasp. Don't miss this amazing opportunity to experience a must-see artist live in the heart of Canterbury.



▶ Listen at [canterburyfestival.co.uk](http://canterburyfestival.co.uk)

Sponsored by

**Paul Roberts**

CANTERBURY

Headline Sponsor

Events at The Marlowe: Box Office 01227 787787 | [marlowetheatre.com](http://marlowetheatre.com)





# The Keys of Canterbury

Frisian Symphonic Wind Orchestra    Conductor Jouke Hoekstra  
with    Jess Gillam (Saxophone)

---

**Saturday 26 October, 7.30pm**

Cathedral Nave

Tickets £30, £25, £20, £15

---

In an exciting international collaboration, multi award-winning saxophonist Jess Gillam joins the Frisian Symphonic Wind Orchestra to present the world premiere of *The Keys of Canterbury* by John Harle, a work commissioned by Canterbury Festival.

*The Keys of Canterbury* is based loosely on a work by Gabrielli (1554-1612), which was the first piece of music to call for passages played either quietly or loudly. It was also spatial, requiring two quartets of brass instruments to be separated by some distance. John's new work reflects these qualities, capitalising on the cathedral setting and the specific forces of the FSWO in a triumph of tonality over dissonance. The programme also contains works by Brahms, Fauré and Shostakovich, as well as short pieces by leading Dutch composers and works from Jess's album *Rise*.

The Festival is delighted to welcome the FSWO which was established in 1983 by tonight's conductor Jouke Hoekstra. Repeat winners at the World Music Contest, they record prolifically and have toured the world. International collaboration and participation in festivals is key to their work, so they are thrilled to be premiering John Harle's composition tonight.

Soloist Jess Gillam is one of the brightest stars in music today. A simply phenomenal player and passionate ambassador for music education, chart-topping Jess was recently appointed as BBC Radio 3's youngest ever presenter. She records exclusively for Decca Classics, and is Patron for Awards for Young Musicians. Sure to be a musical highlight - book early!

Sponsored by

The  
Canterbury  
Auction  
Galleries

Headline Sponsor



# Orphan Colours

**Saturday 26 October, 9.30pm**  
Spiegeltent  
Tickets £16.50

**'All On Red is an album which pulsates with a fierce energy, the band firing on all cylinders' (Americana-uk.com)**

When UK alt-country outfit ahab went on indefinite hiatus, songwriter Steven Llewellyn decided to form his own band with the help of originator Dave Burn and former bassist Graham Knight. They were later joined by drummer Steve Brookes (Danny & the Champions of the World) and former lead guitarist with Noah and the Whale, Fred Abbott. Orphan Colours was born!

This friendly Americana super group have some impressive credentials with Llewellyn and Burn having honed their songwriting craft with ahab - championed by BBC Radio 2's 'Whispering' Bob Harris; not to mention Abbott's Noah & The Whale world tours with appearances at The Royal Albert Hall, Coachella and *Later with Jools Holland*.

Their debut album *All On Red* has received widespread acclaim, combining punchy and dynamic songwriting with driving rock, rootsy country and an edge of the 1970s Southern Californian sound.



## Invicta Jazz

**Sunday 27 October, 11am**  
Spiegeltent  
Tickets £11.50

The Invicta Jazz Orchestra presents their repertoire of jazz standards, big band classics and modern numbers in the amazing surroundings of the Salon Perdu Spiegeltent. With an ensemble featuring approximately 40 multi-generational musicians, the Invicta Jazz Orchestra are guaranteed to get your feet tapping! Led by Director of Music Scott Jenkins (Loose Change, Jive Aces), the orchestra has performed at Hastings Jazz and Blues Festival, Faversham Hop Festival, as well as numerous dates in France and The Netherlands.



## Made In Kent: Track Record Showcase

**Sunday 27 October, 3pm**  
The Ballroom, Orange Street  
Tickets £6.50

Track Record showcases the best up-and-coming bands and solo musicians aged 12-18 in Kent. The competition winners receive rehearsal space, studio time, mentoring from an industry professional and much more. Join us for an afternoon performance featuring this year's shortlisted artists and help support the development of young musicians in Kent.

Sponsored by



Visit **Made In Kent**, page 49, for more info

# Canterbury Choral Society: From the New World and the Old

**Sunday 27 October, 7.30pm**  
Colyer-Fergusson Hall  
Tickets £26.50, Students £16.50

|                       |                  |
|-----------------------|------------------|
| <b>Richard Cooke</b>  | <b>Conductor</b> |
| <b>Robin Bailey</b>   | <b>Tenor</b>     |
| <b>Benjamin Bevan</b> | <b>Bass</b>      |

Canterbury Choral Society steps out in a break with tradition singing Ariel Ramirez *Misa Criolla* and *Navidad Nuestra*, two evocative works from Argentina accompanied by guitars, piano and percussion, full of Spanish dance influence and rhythmic and melodic colours. Other works will include Vaughan Williams' *Five Mystical Songs* and Holst's *Choral Hymns from the Rig Veda*, set to Hindu texts. An evening of diversity which will appeal to audience members who like to hear something 'a bit different', catchy and engaging with music embodying popular style combined with the traditional. Step into our world!

Box Office: 01227 457568 | [canterburyfestival.co.uk](http://canterburyfestival.co.uk)



## Bursary Competition Final

**Monday 28 October, 7.30pm**  
St Gregory's Centre for Music  
Tickets £15, Students £8

Now in its ninth year, the Bursary Competition has launched some of Kent's finest young musicians, supporting them in their performance development. It is fiercely competitive and each year the standards seem higher than ever.

The talent, technical brilliance and poise of the young players is tested as the judges have the challenge of deciding who will win the prize and the role of Festival Ambassador of the year.

Supported by



## Snowdown Colliery Welfare Male Voice Choir

**Tuesday 29 October, 7.30pm**  
St Peter's Methodist Church  
Tickets £12.50

The Snowdown Choir was formed in 1929 by Welshman John Yorath, who was the choir-master of St. Peter's Church Aylesham. The choir has now been based in the village for some 80 years, during which time it has given more than 2,000 concerts at venues as small as Tilmanstone Church and as large as The Albert Hall, in towns and villages in England and Wales, as well as France, Belgium and Holland. During these events, the choir has raised in excess of £1,000,000 for worthy causes.

Although originally a miners' choir, the closure of the coalfield means that members come from all walks of life and from a wide area of Kent.



'One thing we tend to forget... is how sexy this brand of early jazz can be. It's easy to assume that Jelly Roll Morton, Sidney Bechet et al can't speak to a younger generation, but the pianist Andrew Oliver's quartet lays that notion to rest'

(*The Sunday Times*)



## The Dime Notes

**Tuesday 29 October, 8pm**  
Spiegeltent  
Tickets £17.50

Four dudes - David Horniblow on the clarinet, Andrew Oliver on the piano, Dave Kelbie guitar and Tom Wheatley on bass - crack out blues-drenched and clarinet-driven 1920's New Orleans Jazz.

Propelled by Andrew Oliver's quicksilver, quirky piano and soaked in the smooth bluesy clarinet and trumpet sounds of David Horniblow, expect a stylish homage and contemporary recreation of the infectious and unforgettable sound of one of the great eras in jazz history. Book early, you'll love it.

Supported by  
The Festival Friends



## Guitar Conspiracy

**Tuesday 29 October, 7.30pm**  
Great Hall, Kent College  
Tickets £12.50

Sponsored by



A unique line up of six classical guitars and one electric bass conspire to put their stamp on music from many centuries and genres. All soloists in their own right and based in the South East, the players have pooled their talents to deliver a sound that combines the familiar timbre of multiple nylon strung guitars with the sweet and flowing, sometimes funky, sound of a fretless electric bass.

Formed in 2017 the 'conspiracy' began as an informal music reading club that met for the joy of making music together. As the project developed and the potential of the format became more evident, tailored musical arrangements and new compositions were added to the pot.

As their somewhat eclectic repertoire came together, it seemed a natural progression for the group to bring their music to the attention of the world at large - and so the conspiracy was outed!



## Bowjangles: Excalibow

**Wednesday 30 October, 7pm**  
Spiegeltent  
Tickets £15.50



Sponsored by

**Barretts**

We're delighted to welcome the all singing, all dancing string quartet Bowjangles, winners of the 2018 *Spirit of The Fringe* Award.

The intrepid group presents their most magical show so far: a theatrical, musical journey through myths, folklore, legends and a portal in a cello case, in the quest to find the most priceless relic of all, a magical violin bow known as *Excalibow*.

Expect tales of monsters, ancient gods, historical figures and characters of pure fantasy in this action-packed show, all presented in Bowjangles' own inimitable style, full of comedy, energy, panache and almost every musical genre you can imagine.

Warning: may contain traces of Abba.



## BIG Sous L'Arbre Acoustik

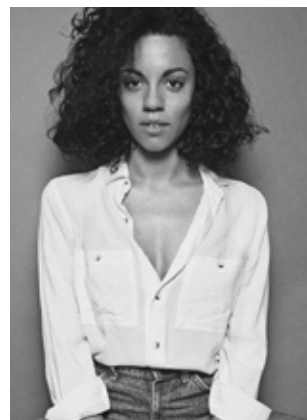
**Thursday 31 October, 8.30pm**  
Spiegeltent  
Tickets £18

Dakar artist BIG visits Canterbury Festival for a special evening at the Spiegeltent. BIG will be joined by his musicians known as *Sous L'Arbre Acoustik* (under the acoustic tree), where a group of friends would meet to drink tea and play music daily under a palaver tree.

BIG's style consists of Afro traditional music, blending many different rhythms with modern styles. He sings in Wolof, Sérère, Pulaar, French and English. BIG has opened for several well-known Senegalese artists, such as Orchestra Baobab, Cheikh Lo, Omar Pene et le Super Diamano, Yoro Ndiaye and more.

Put some African sunshine into your Thursday evening.

Box Office: 01227 457568 | [canterburyfestival.co.uk](http://canterburyfestival.co.uk)



## Anoushka Lucas

**Wednesday 30 October, 9.30pm**  
Spiegeltent  
Tickets £16.50

Influenced by the sounds and writing of Carole King, Zadie Smith, Amy Winehouse and Billie Holiday, Anoushka Lucas has been described as 'an exceptional voice and a great songwriter' by Jamie Cullum. She blew us away supporting Sophie Ellis-Bextor in 2018 and we are very excited to welcome her back for a special Spiegeltent performance.

Sponsored by  
**Barretts**

## A Musical Tapestry

**Friday 1 November, 7.30pm**  
Eastern Crypt, Canterbury Cathedral  
Tickets £25, £20

**David Rees-Williams**    **Piano**  
**Iain Bellamy**        **Tenor Saxophone**  
**Ian Crowther**       **Oboe**  
**With the Festival Chamber Orchestra Ensemble**

Come and hear these stunning musicians perform a wonderful programme of varying musical colours and textures, explored through a combination of jazz and classical styles, reinterpreted in a unique, exciting way. The programme includes works by JS Bach, Marcello and Purcell amongst others, together with improvised pieces for saxophone and piano. Dave and Iain's musical partnership can be encapsulated in a wonderful quote from David Bowie 'I don't know where I'm going from here, but I promise it won't be boring'. Not to be missed!





# Opera-lele: Access All Arias

**Saturday 2 November, 7pm**  
Spiegeltent  
Tickets £13.50

Opera-lele is a unique musical comedy act specialising in singing music from opera and musical theatre accompanied by the emotionally powerful yet understated twang of the ukulele.

Having both trained as singers at the Royal College of Music and Goldsmiths College in London, George & Mandi joined forces to form Opera-lele and in 2016 they burst onto the music scene with a performance on a festival main stage. The audience was stunned, excited and delighted by what they saw and heard and since then, Opera-lele has been counting standing ovations at music festivals, cabaret stages, theatres, churches and castles across the UK and overseas.

Sponsored by



## Big Orange Head

**Friday 1 November, 9.30pm**  
Spiegeltent  
Tickets £16.50

Featuring a collective of musicians with a varied and illustrious history, and fronted by Shane Attwooll, a singer whose film career is becoming as impressive as his comedic prowess, the popular Big Orange Head perform an irresistible blend of old and new classics. With a unique and highly entertaining style, lush vocal harmonies, brass, double bass, guitar, keyboards and whatever instruments are to hand, we can guarantee you will be entertained!

Sponsored by



## The 360 Band featuring Hamish Stuart

**Saturday 2 November, 9.30pm**  
Spiegeltent  
Tickets £22.50

We are thrilled to welcome Glasgow-born Hamish Stuart of the Average White Band to close this year's Spiegeltent in style!

Hamish has worked with a multitude of music legends including Diana Ross, Aretha Franklin and Jeffrey Osbourne, as well as playing a crucial role in Paul McCartney's UK number one album, *Flowers in the Dirt* and his 1989-93 record breaking world tour.

After his stint with Sir Paul, Hamish formed his own band, working with Average White Band pals Malcolm 'Molly' Duncan and Steve Ferrone, creating a plethora of fresh material. Famous for his tenor sax on tracks such as *Pick Up The Pieces*, Molly (and Steve) will be joining Hamish for this special show and the band will even be accompanied by a full horn section. Don't miss out.

Sponsored by



Technical Sponsor

Box Office: 01227 457568 | [canterburyfestival.co.uk](http://canterburyfestival.co.uk)

# Tallis Scholars

**Saturday 2 November, 7.30pm**

Canterbury Cathedral Nave

Tickets £28, £24, £20, £15

Sponsored by

**The John Swire 1989 Charitable Trust**

**Fenwick**  
CANTERBURY

The Festival is brought to a triumphant close by celebrated early music vocal ensemble Tallis Scholars.

Known for their subtle clarity and tone, the Scholars have done more than perhaps any other group to establish sacred vocal music of the Renaissance as the greatest repertoire of Western classical music. They have played on every continent except Antarctica, in venues including the Royal Albert Hall, the Sistine Chapel, the Lincoln Center and Carnegie Hall New York, Saint Mark's Venice, Wigmore Hall, Beijing Concert Hall, Megaron Athens and the Opera House Sydney.

Expect a popular programme with a mix of old and new (Arvo Pärt and Muhly) and some favourite Renaissance pieces (Tallis' *Miserere* and *Lamentations*), as well as a scattering of pieces that you may not have heard before. They are, in short, the superstars of their genre.

**'One of the UK's greatest  
cultural exports'**

*(BBC Radio 3)*



Box Office: 01227 457568 | [canterburyfestival.co.uk](http://canterburyfestival.co.uk)



# Daytime Concerts in the Spiegeltent

Come and support the musicians of the future as they make their debut on the Spiegeltent stage. All schools' concerts are free, no need to book.

## Kent College

Tuesday 29 October, 1pm

Ensemble and solo items performed by Kent College musicians, including the lower school choir - Cantabile.

## Canterbury College

Friday 1 November, 1pm

Music and performing arts students from Canterbury College will be playing, singing, dancing and acting a selection of popular repertoire and extracts.

## Canterbury Academy

Wednesday 30 October, 1pm

Students of all ages will perform a range of classical, popular and musical theatre songs and pieces, led by their elite sixth-form programmes.

## Play Music Primary Showcase

Saturday 2 November, 10.30am

Are you ready to rock? Talented children from primary schools across Kent come together to perform classic rock hits, as well as a few more recent pop favourites. Expect guitar solos, powerful vocals and crashing cymbals. Featuring children from Herne Bay Junior School, Bridge and Patricxbourne C of E Primary and Phoenix Community Primary School.

## Simon Langton Grammar School for Boys

Thursday 31 October, 1pm

Current sixth-form students perform a range of music including popular songs, hits from musicals, jazz and classical music.

Sponsored by



**KENT COLLEGE**  
CANTERBURY

Headline Sponsor

Canterbury Christ Church University presents an exciting series of afternoon concerts. Performances start at 1.10pm, are free and take place in St Gregory's Centre for Music, North Holmes Road, unless otherwise stated. Accompanied children aged five and over are welcome.

## LUNCHTIME CONCERTS

Celebrating 10 years as  
Partner and Principal Sponsor



To ensure your place,  
book your free ticket at  
[canterbury.ac.uk/  
arts-and-culture](http://canterbury.ac.uk/arts-and-culture)



Monday 21 October

### Escapades

Sam Corkin (saxophone)  
David Knotts (piano)

It's a steal! Con tricks and fraud are at the heart of this sparkling lunchtime programme which includes music by John Williams for Spielberg's film, *Catch me if you can*.

Tuesday 22 October

### Chansons D'Amour: Aspects of Love

Michelle Harris (mezzo-soprano)  
Helen Crayford (piano)

A selection of delectable French songs concerning affairs of the heart, from the familiar to rare, including Fauré, *Après un rêve*, Duparc *L'invitation au voyage* and *Chanson triste*, as well as Massenet's *Élégie* and *Nuit D'Espagne*.

Wednesday 23 October

### Commercial Music: Full Flow

Give your lunchtime a lift with an effortless selection performed by a band comprising teaching staff on Christ Church University's Commercial Music programme. **Please note this event will take place at the Daphne Oram Building.**

Thursday 24 October

### Trio 'Manor Manouche'

Nevil Willis & Thomas Abrahams (guitars)  
Jarrod Coombes (double bass)

Spend a laid-back lunch hour in the electrifying company of the acoustic trio that plays gypsy swing in the style of the great Django Reinhardt. This wonderful band has become a Festival fixture, frequently drawing a full house. A treat.

Friday 25 October

### CONTACT and New Music Ensemble

(Dir. Matt Wright)  
A dynamic event colliding the classical with the electronic, the written with the improvised and the screen with the stage. CONTACT and the New Music Ensemble present 45 minutes of new music, sound and visuals by staff and students in this second Canterbury Festival project which brings together classical, contemporary and electronic musical traditions. **Please note this event will take place at Anselm Studio 1.**

Monday 28 October

### Canterbury Festival Maxwell Davies Memorial Prize

A showcase of student competitions from the last academic year, that will culminate in the awarding of the Canterbury Festival Composers' Competition prize, named in honour of the University's long creative association with Sir Peter Maxwell Davies, who died in 2016.

Tuesday 29 October

### Beethoven and the Romantic Spirit

Alistair Bamford (bass-baritone)  
Helen Crayford (piano)  
Dale Savage (reader)

Anticipating 250 years since Beethoven's birth in 1770, and marking the birth of the song cycle, a performance of *An die ferne Geliebte*, alongside other Romantic works for voice and piano culminating in Schoenberg's glorious Op.1, and concluding with Beethoven's settings of Scottish folk songs. The performance will include specially written poems that reimagine in contemporary terms the journeys of the poets, composers and performers.

Wednesday 30 October

### Top Voices

(Dir. Chris Price)

### University Big Band

(Dir. Steve Waterman)  
Two of the University's finest ensembles join forces: expect a blast! Big Band presents jazz and swing classics by the likes of Benny Golson and Dizzy Gillespie, while Top Voices performs beautiful pieces for upper voices from the Renaissance to the present day.

Thursday 31 October

### Ravel, Chansons Madécasses and other works

Heledd Francis Wright (flute)  
Rosie Banks (cello)  
David Knotts (piano)

Tania Holland Williams (voice)  
Four world-class musicians combine to explore works in quartet, trio and duo formation around the stunning centrepiece of the programme, Ravel's *Chansons Madécasses*. Not to be missed.

Friday 1 November

### Dance@Canterbury: RE-MIX

Students studying Dance Education at Canterbury Christ Church University perform a selection of their choreography, including that which combines digital media and film. **Please note that this event will take place at Anselm Studio 1.**





# CREATING EXCELLENCE IN THE ARTS

## KENT COLLEGE

### Proud to sponsor Canterbury Festival

- Music, Drama, Art and Design Scholarships available for Yr 7, Yr 9 and Yr 12
- 600 seat state-of-the-art auditorium for the performing Arts opening in September 2019
- Regular regional and International performance opportunities
- 7 choirs, numerous instrumental groups, including orchestras and chamber ensembles
- Exceptional academic results at IB, A Level and GCSE
- Students continue performance studies beyond school at leading Conservatoires and Drama Schools

**Come and visit us**  
01227 763 231



**Kent College**  
Canterbury  
[KENTCOLLEGE.COM](http://KENTCOLLEGE.COM)

'A luscious  
sweeping  
tale'

★★★★★  
(*The i*)

## Dyad Productions presents **Orlando**

**Monday 21 October, 7.30pm**  
St Mary's Hall Studio Theatre  
Tickets £16.50

*Orlando* tells the life-affirming, comedic tale of an immortal poet, whose gender cannot be pinned down, and whose spirit cannot be caged. Orlando's irreverent, romantic adventures across British history – from the 1500s onwards – explore human identity, nationality and sexuality – all so topical today.

Drawing on a decade's worth of critically-acclaimed theatre-making, Dyad Productions – performer Rebecca Vaughan and writer/director Elton Townend Jones – explore what it means to find our place in the world whilst remaining utterly true to who we are. Based on the satirical 1928 novel by Virginia Woolf.

From the award-winning creators of *I, Elizabeth*, *The Time Machine*, *The Unremarkable Death of Marilyn Monroe* and *Female Gothic*.



## Card Ninja

**Wednesday 23 October, 7pm**  
Spiegeltent  
Tickets £15.50

'In his lethal hands harmless  
playing cards become ninja  
stars of spinning destruction'

(*Broadway Baby*)

First of all, this is not a magic show but a ninja show – with playing cards!

Riotous fun and a sweep of high-flying card tricks can only mean one thing; Javier Jarquin, aka Card Ninja, is back in town. Prepare yourselves for extreme card-flicking stunts using genuine playing cards. Comedian Javier dazzles audiences with displays of decks as weapons. Extreme precision, impeccable timing and astonishing speed/distance – you will not believe your eyes. Expect risky and deadly fun.

Sponsored by

**LILFORD** | GALLERY



'An up, up and away fringe  
hit! Spiffing perfection'  
(*The Daily Telegraph*)

## Those Magnificent Men

**Wednesday 23 October, 7.30pm**  
St Mary's Hall Studio Theatre  
Tickets £16.50

Chocks away! *Those Magnificent Men* marks the centenary of the first nonstop flight across the Atlantic. This nail-biting, side-splitting true story of the daredevil flight by Alcock and Brown, by acclaimed writing duo Mitchell & Nixon, retells how, in the tiny open cockpit of a converted Vickers biplane, they flew from Newfoundland through dense fog, sleet, snow and hail – sometimes upside down – to Ireland and worldwide celebrity.

The Foundry Group revives its highly popular production, starring Radio 4 regular David Mounfield (*Count Arthur Strong's Radio Show*) and writer/performer Brian Mitchell (*The Ministry of Biscuits*), who endeavour to tell the epic tale with cardboard, two stools and some left-over props.





# Casus: Knee Deep

Thursday 24, Friday 25 & Saturday 26 October, 7pm

Spiegel tent

Tickets £18.50, Students / Under 18s £13.50

Australian contemporary circus company Casus returns to headline the first week in the iconic Salon Perdu Spiegel tent with its internationally acclaimed show *Knee Deep*.

One of the world's most exciting leaders in acrobatic-based circus, Casus is in residence for three nights, offering a masterclass in gymnastic skill that will amuse and amaze all ages. Every minute counts as the four performers explore the boundaries of strength and fragility, through acrobatics and aerial stunts. Bodies are pushed and pulled, eggs are weighed, tested and walked on!

Unlikely bonds are forged and acts of intimacy share space with thrilling physical feats. Precision, poise and playfulness are key to this spectacular display of pure talent.

*Knee Deep* won international accolades including *Best Circus & Physical Theatre 2016* Adelaide Fringe and *Best Circus & Physical Theatre* Avignon 2015.

Sponsored by



CLAGUE ARCHITECTS

# Le Gateau Chocolat & Jonny Woo:

## A Night at the Musicals

Friday 25 October, 9.30pm

Spiegel tent

Tickets £18.50

A *Night at the Musicals* is a tortured love letter to the glorious genre of musical theatre. High glamah, intense assholism, divine costumes and raggedy choreography are guaranteed in a night you'll never forget!

Dubbed the 'Ebony and Ivory of drag' by the Australian press, Olivier winning star of *La Clique* & *La Soirée*, Le Gateau Chocolat and Queen of the alternative drag scene, Jonny Woo, visit Canterbury Festival with their award-winning show. Hilarious hijinks and shady shenanigans abound as they 'Les Misérables' all the musicals you know and love.

Le Gateau Chocolat and Jonny Woo will drag you through the back catalogue of fabulous musicals for a raucous night of ballsy ballads, delightful duets and slaughtered show tunes. From *Gypsy* to *Grease*, *Annie* to *Lion King* - no show is safe.

Sponsored by

**Æode**

Box Office: 01227 457568 | [canterburyfestival.co.uk](http://canterburyfestival.co.uk)



Brother Wolf presents

## The Mad Hatter's Tea Party

Saturday 26 October, 7.30pm

St Mary's Hall Studio Theatre

Tickets £16.50

'I want to see it again.  
And again, and again.'

(Audience Member, aged 10)



## Laughing Boy Comedy Club

Sunday 27 October, 7.30pm

Spiegel tent

Tickets £16.25

Take a trip down the proverbial rabbit hole with Brother Wolf's 21st anniversary production - *The Mad Hatter's Tea Party*.

Adapted, produced and directed by award-winning actor/writer/producer, James Hyland, this one-of-a-kind show explores Lewis Carroll's inimitable world of Wonderland from the point of view of two of its most iconic characters: The Hatter and the March Hare. Fantastical and utterly bonkers, *The Mad Hatter's Tea Party* is both ground-breaking and surprising in equal measure.

Both Wolf have collaborated with original anti-brand and fashion design specialists, A Child Of The Jago, who have created stunning concept costumes for the tour. Expect a sea of colour and style, as our dressed-to-impress tour guides compel and confuse in equal measure.

Brother Wolf is renowned for risk-taking and cutting-edge drama - so grab your seat at The Hatter's table and get ready for the weirdest and wildest party this side of Wonderland!

Age recommendation: 7+

Off The Kerb Productions presents the Laughing Boy Comedy Club. Don't miss an unrivaled night of entertainment, featuring comedy sets from a group of leading comedians in the spectacular Spiegel tent.

'Regularly featuring the cream of British stand-up'

(*The Guardian*)





## Made In Kent Poetry

**Friday 4 October**  
Schools' Poetry, 5.30pm  
Poet of the Year, 7.30pm  
Colyer-Fergusson  
Free

Aspiring poets gather to read their work and receive certificates and prizes. Celebrate Made In Kent's Schools' Poetry Competition with readings from this year's published young writers and prizes for each category.

Sponsored  
by  
**University of Kent**

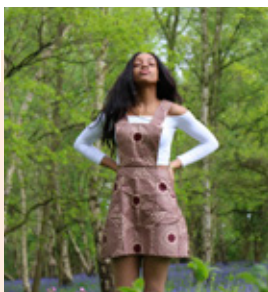
Afterwards don't miss the Festival Friends' Poet of the Year event featuring readings by our shortlisted 2019 poets.



## Made In Kent Comedy

**Tuesday 29 October, 8pm**  
Anselm Theatre  
Tickets £6.50

Our annual hunt for Kent's best new comedic talent continues! Join us for a night of stand-up with this year's shortlisted finalists, as they perform in front of a live audience and face our judges. We welcome back our compere Matt Barnard and last year's winner Dominic Harasiwka, along with challengers for the 2019 title!



## Made In Kent Dance

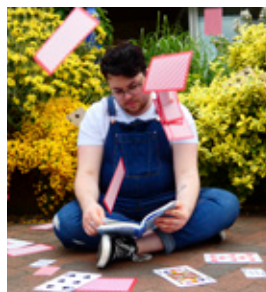
**Wednesday 30 October, 7.30pm**  
Anselm Theatre  
Tickets £6.50

Don't miss a spectacular showcase of contemporary dance created by Kent-based performers and choreographers aged 16-24. We look forward to a performance by Canterbury Christ Church University students followed by this year's winners:

**Cascade Dance: FLUX**  
FLUX explores the theme of electricity, both statically as an accumulation of charge and dynamically as a current.

**Stephanie O Daniels: Afro Flavour**  
Energetic, exciting and packed with the unexpected - prepare for a taste of Africa.

**Instep Dance: A Match to the Heart**  
Inspired by Gretel Ehrlich's memoir of a woman struck twice by lightning, who lived to tell the tale.



## Made In Kent Theatre

**Thursday 31 Oct, 7.30pm**  
Anselm Theatre  
Tickets £6.50

Join us for a performance from this year's Made In Kent: Theatre finalist; Alternate Perspective Theatre Company with *Sense of Wonder* - an immersive and sensory adaptation of Lewis Carroll's *Alice's Adventures in Wonderland*.

Join Alex Liddell as he accidentally finds himself in a wondrous world filled with crazy characters and their astonishing stories.



Supported using public funding by  
**ARTS COUNCIL ENGLAND**



**Celebrating 10 years as Partner and Principal Sponsor**



Visit **Made In Kent**, page 49, for more info. Don't miss **Track Record**, visit page 14.



Degrees of Error & Something for the Weekend presents

## Murder She Didn't Write

Friday 1 November, 7pm  
Spiegeltent  
Tickets £15.50

'Absolutely fantastic... incredibly clever... laugh out loud funny... a truly entertaining and hilarious take on the murder mystery and absolutely not one to miss.'

★★★★★

(Voice Magazine)

A classic murder mystery is created on the spot in this ingenious and hilarious show from Bristol Improv Theatre's resident company.

You become Agatha Christie in this improvised comedy, as an original murder mystery play is created - based entirely on audience suggestions. So, take up your magnifying glass and don your deerstalker for a never-seen-before (and never-to-be-seen-again) evening of murder, mayhem and making it up on the spot.

Miss Crimson poisoned in the parlour? Mr Gold exploded by cannon in Sainsbury's? You decide! But will you guess whodunit?

Sponsored by



Box Office: 01227 457568 | [canterburyfestival.co.uk](http://canterburyfestival.co.uk)

Worcester Repertory Company presents

## Where is Mrs Christie?

### The Mystery of Agatha Christie's Eleven Lost Days

Saturday 2 November, 7.30pm  
St Mary's Hall Studio Theatre  
Tickets £16.50

Dark secrets, mystery and suspicion abound in this stunning new one-woman show performed by Liz Grand. In 1926 Agatha Christie was at the centre of a mystery as perplexing as any of her fiction: a series of events that sparked one of the biggest and most extensive manhunts in history. When she was eventually found at a luxury hotel in Harrogate, the author claimed that she was suffering from amnesia. Neither the press nor the police believed her...

Did she lie? Was it a publicity stunt? Or was there an underlying crisis known only to her? As in all good thrillers, all will be revealed...







## And Can It Be

**Thursday 10 & Friday 11 October, 7pm**  
Great Hall, Kent College  
Tickets £5 available from [kentcollege.com](http://kentcollege.com)



**KENT COLLEGE**  
CANTERBURY

Headline Sponsor

The Canterbury Festival was delighted to welcome Kent College as a Headline Sponsor in 2018. With the relationship came the promise of an exciting new development – the Great Hall – built by the school to showcase activities from its cultural life, to accommodate whole school gatherings, and to become a new Festival venue.

As a curtain-raiser, in early October, the Great Hall hosts the world premiere of a new work in words and music by Paul Glass and David Lamper – scenes from the life of John Wesley. Presented by pupils from the Junior and Senior Schools of Kent College, Canterbury, the production celebrates the opening of the new Great Hall.

The Marlowe and  
Dance Consortium presents

## Dada Masilo's Giselle

**A fearless  
re-imagining of  
the iconic classic**

**Friday 1 & Saturday 2 November, 7.30pm**  
The Marlowe Theatre  
Tickets from £21.50  
Tickets for this event are available from  
The Marlowe Box Office only.

Set in a South African village, Giselle is thrust into a world of betrayal and shame when her lover rejects her. Killed by heartbreak, Giselle returns from the grave as a supernatural being, bent on revenge.

Performing in the title role, Dada Masilo brings her stunning high-speed style to the stage, fusing ballet, contemporary and traditional Tswana dance. Powered by a hauntingly beautiful score combining classical strings with African percussion and voice, this UK premiere is ballet but not as you know it.



Events at The Marlowe:  
Box Office 01227 787787 | [marlowetheatre.com](http://marlowetheatre.com)



State-of-the-art facilities including the new Malthouse Theatre, with an audience capacity of 384, flexible stage and seating configurations, an orchestra pit, as well as superb studios, technical and backstage spaces to allow pupils to create, perform in and contribute to every element of a production







## William Clegg: Under the Wig

**Monday 21 October, 5.45pm**  
Cathedral Lodge  
Tickets £10.50

How do you chat to someone accused of a savage murder? Or prepare a court case? Or sway a jury?

Step into the shoes of criminal barrister William Clegg as he meets clients in prison, works out weaknesses in the other side's case, and confronts witnesses at tense trials.

Clegg revisits some of his most intriguing briefs - from the murder charge facing Colin Stagg to the shooting of Jill Dando, to the first prosecution under the Nazi war crimes act and the burglar jailed for life by an earprint.

All the while he lays bare the secrets of his profession, from the rivalry among barristers to the moments before a verdict is announced, and how the system of justice occasionally gets it wrong.



## James Wong

**Tuesday 22 October, 5.45pm**  
Cathedral Lodge  
Tickets £10.50

We are delighted to welcome back garden designer, TV presenter and ethnobotanist James Wong, who joins the Festival to discuss his new book *10 a Day the Easy Way*.

According to a growing body of international studies, little tweaks to your everyday diet to get you beyond the 5-a-day minimum and towards 10-a-day, could slash your risk of developing the biggest diseases to affect the Western world. In fact, experts agree that simply eating more fruit and veg is the single most important dietary change you can do for your health!

As only 3 out of 10 people are even achieving the minimum amount of fruit and veg, James is on a mission to make getting there easy. No gimmicks, no 'banned' foods, no miserly portion sizes.



## Jack Brown: Inside No.10

**Wednesday 23 October, 5.45pm**  
Cathedral Lodge  
Tickets £10.50

This is an intimate account of the building at the core of British political power. Jack Brown is the first-ever researcher-in-residence of No.10 and has had access to the compelling story of the relationship between the house and its post-war residents.

Over the years No.10 - which was designed in the late 17th century - has undergone constant adaptation to accommodate the changing role and requirements of the premiership. What does each occupant's use and modification of the building reveal about their values and how they sought to govern? Book early as this fascinating Talk is bound to be popular.

Festival Talks in Cathedral Lodge starting at 5.45pm last for approximately 1 hour followed by a Q&A. Those who may need to leave before the end to attend another event are welcome to do so discreetly.

The bar will be open 30 minutes prior to the Talk and Books will be on sale at the venue from Canterbury Christ Church University Bookshop.

## TALKS

Talks series  
sponsored by  
**The Canterbury  
Auction  
Galleries**  
Headline Sponsor



## Christopher Joll: The Drum Horse in the Fountain

Thursday 24 October, 5.45pm  
Cathedral Lodge  
Tickets £10.50

Christopher Joll, regimental historian of the Household Cavalry, gives an entertaining account of the heroes and rogues of the Guards who have served their sovereign since 1660.

In addition to forty-four holders of the Victoria Cross, Guardsmen have headed the Secret Intelligence Service; provided several foreign Heads of State; and a candidate for the throne of Albania. They have also included a Prime Minister and a raft of Cabinet Ministers; a Cardinal who might have been Pope; an Archbishop of Canterbury, a Bishop; championship boxers, footballers and Olympic medallists; best-selling authors, playwrights and composers; international pop, jazz, light and classical musicians; comedians; artists; Oscar winning film stars; spies, traitors, murderers – and some of the most eccentric men ever to have been let loose on the public.



## Fergus Butler-Gallie: A Field Guide to the English Clergy

Friday 25 October, 5.45pm  
Cathedral Lodge  
Tickets £10.50

The Reverend Fergus Butler-Gallie is a young curate in the Church of England who once accidentally appeared on *Only Connect*.

His first book, *A Field Guide to the English Clergy: A Compendium of Diverse Eccentrics, Pirates, Prelates and Adventurers; all Anglican, Some Even Practising*, is a witty set of portraits of the rich and strange collection of God-fearing (and not so God-fearing) Church leaders.

He holds a Bachelor's degree in History from the University of Oxford and a Bachelor's degree in Theology from the University of Cambridge. He is (according to his own taxonomy) a Bon Vivreur first and foremost, with a soupçon of roguishness and prodigality. Fergus will be 'in conversation' with David Parker from The Canterbury Auction Galleries, sponsors of the Talks.



## Bettany Hughes: Istanbul

Monday 28 October, 5.45pm  
Cathedral Lodge  
Tickets £10.50

Istanbul has always been a place where stories and histories collide and crackle, where the idea is as potent as the historical fact. From the Qu'ran to Shakespeare, this city with three names - Byzantium, Constantinople, Istanbul - resonates as an idea and a place, and overflows its boundaries - real and imagined.

Standing as the gateway between the East and West, it has served as the capital of the Roman, Byzantine, Latin and Ottoman Empires. For much of its history it was known simply as The City, but, as historian and broadcaster Bettany Hughes reveals, Istanbul is not just a city, but a story.

**'A passionate retelling of  
Istanbul's history and its  
impact on the world today.'**

*(Financial Times)*





## Peter Hore: Lindell's List – Saving British and American women at Ravensbrück

Tuesday 29 October, 5.45pm  
Cathedral Lodge  
Tickets £10.50

Mary Lindell's remarkable career spanned two world wars. As a nurse on the Western Front she was decorated for bravery and as a resident of 1940s Paris, she took the German occupation as a personal affront. She started an escape line, was arrested, and upon release escaped to London. Volunteering to return to France, she was re-arrested and thrown into the Women's Hell at Ravensbrück. There she saved the lives of many American and British women.

Retired Naval Captain Peter Hore tells the impressive, shocking and compelling story, not only of Mary Lindell but of Women Agents of S.O.E and the resistance that helped pave the way for the D-Day.



## Howard Smith: Rupert – The Anthropomorphic Bear

Wednesday 30 October, 5.45pm  
Cathedral Lodge  
Tickets £10.50

Canterbury is the home of Mary Tourtel (née Caldwell) who created *Rupert, The Little Lost Bear* almost 100 years ago. Discover how it all began in 1920 as the result of a circulation war between the *Daily Express* and the *Daily Mail*, as well as the dark secrets that influenced Rupert's adventures over the decades. Why did he fly so much and who created the origami in the annuals? This is the beautifully illustrated story of why and how from Rupert-specialist and author, Howard Smith on the little bear from Nutwood. Nostalgic, entertaining and a treat to reminisce about magical days.



## Lars Tharp: Five Men Behaving Badly – Hogarth's 1732 Grand Tour of Kent

Thursday 31 October, 5.45pm  
Cathedral Lodge  
Tickets £10.50

A Festival favourite, the popular and hugely engaging Lars Tharp returns with a cracking discussion of Hogarth's progress through Kent. A ceramics and oriental art specialist and broadcaster, Lars works regularly with the BBC: from 1986 to 2018 on *The Antiques Roadshow*, plus dozens of TV and Radio programmes including his own series, *Inside Antiques* (BBC2), *Hidden Treasures* (chairman and writer, Radio 4), and on the *Art of the Baroque* (Radio 2), not to mention the occasional contribution to *Woman's Hour* - on Scandinavian knitwear.



## Andrew Lownie: Dickie & Edwina – The Lives and Loves of the Mountbattens

Friday 1 November, 5.45pm  
Cathedral Lodge  
Tickets £10.50

This fascinating portrait of two of the most glamorous figures of their time closes the Talks series. With the 40th anniversary of the assassination of Earl Mountbatten of Burma, Andrew Lownie reveals the human side of a leading British historical figure.

The last Viceroy and first Governor General of India, member of the Royal Family and mentor of Princes Philip and Charles: his life covers the most important and controversial issues of the past century. His wife Edwina was the richest heiress in the world, whose pre-war life of multiple lovers found new purpose during World War Two and afterwards with her humanitarian work.



## Mig Kimpton: Floral Curiosity



Tuesday 22 October, 8pm  
Cathedral Lodge  
Tickets £10.50

Join renowned floral designer Mig Kimpton, as he delves into the history of flower arranging and his passion for the art.

Winner of 13 medals at the RHS Chelsea Flower Show, he brings his special show full of flowers, scent, stories and theatrical gossip to Canterbury Festival. Learn how to get the most out of your blooms and thrill at the opportunity to take home one of his designs, all made from scratch in front of your very eyes.

He combines his thirty years of working in theatre with his passion for flower arranging – the perfect show for flower lovers, gossipmongers and those that are floral curious!

Sponsored by



**Festival  
Friends**

Box Office: 01227 457568 | [canterburyfestival.co.uk](http://canterburyfestival.co.uk)



## The Kent College Lecture Chris Lintott



Wednesday 30 October, 8pm  
Great Hall, Kent College  
Tickets £10.50

This year's Kent College Lecture takes place in the grand surroundings of Kent College's new Great Hall. With an Observatory in the School's sights for the future, the Festival is delighted to present Chris Lintott from BBC's *Sky at Night* to raise our gaze to the universe and beyond.

Arguing that humans still have unique capabilities to bring to the table even in the era of technological advance and artificial intelligence, Chris's Zooniverse project uses the internet to harness the talents of thousands of enthusiastic volunteer scientists. Discovery is no longer the exclusive remit of scientists in labs or academics in ivory towers – through Zooniverse we can all join in.

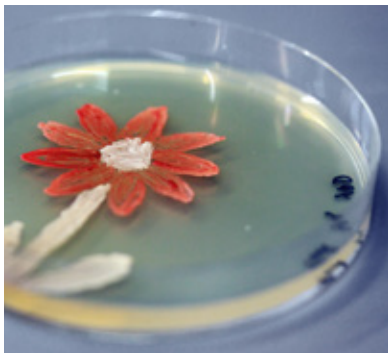
Sponsored by



**KENT COLLEGE  
CANTERBURY**

Headline Sponsor





## Agar Art



**Saturday 19 October, 2pm**

Stacey Building

University of Kent, Canterbury Campus

Tickets £8.50

You are invited to join scientists at the University of Kent for an art project with a difference! Colourful microbes and laboratory equipment replace paint and brushes, as you create your own masterpiece on a Petri dish. After two days of microbial growth your artwork will be photographed and sent to you electronically.

Suitable for all artistic abilities - develop your own artistic practice in a new medium, create your own greetings cards, or just have some fun mixing art and microbiology.

Suitable for ages 11+  
(Under 16s to be accompanied by an adult).



## The Genetics of Superheroes



**Sunday 20 October, 3pm**

St. Mary's Hall Studio Theatre

Tickets £8.50

Television presenter and scientist, Simon Watt, returns to Canterbury after a sell-out show in 2017. This time he explores comic-book mutants - those heroes and villains with superhuman powers. From Wolverine to Magneto, their special abilities are genetic in origin. In this action-packed talk Simon examines what real mutants are like, looking at topics including genetics, mutation, DNA, and mRNA - posing the question: could we one day use genetics to make us superhuman? Perfect for families who love science and superheroes.

For ages 13+

See also

**James Wong**

Full details p.30

TALKS



## The Cocktail Laboratory

**Sunday 20 October, 6.30pm**

The Ballroom, Orange Street

Tickets £27

Mixology meets science as we transform one of Canterbury's most popular nightspots into an informal, interactive laboratory space. The Ballroom mixologists will be shaking up a storm with a range of delicious science-inspired cocktails and tips on cocktail-making. Meanwhile, scientists from the University of Kent will lead the audience in interactive cocktail-themed scientific experiments. Ticket price includes three cocktails.

For ages 18+ only

Working closely with the professors and students of the School of Biosciences under the guidance of Prof Dan Lloyd, this year's programme provides inspiring events for all ages.

SCIENCE

Science events  
sponsored by  
**University of Kent**



Image ©Vanity Studios

## Emma Byrne: The Science of Bad Language

**Monday 21 October, 7.30pm**  
Cathedral Lodge  
Tickets £10.50

'Effing and blinding', it turns out, is an incredibly useful part of our linguistic repertoire. Not only has some form of swearing existed since the earliest humans began to communicate, but it has been shown to reduce physical pain, help stroke victims recover their language and encourage people to work together as a team. Dr Emma Byrne gives a spirited and hilarious defence of our most cherished dirty words from the perspective of evolutionary psychology, outlining the science behind profanities: how it affects us both physically and emotionally, and how it is more natural and beneficial than we are led to believe.



## Outside the Box: A Live Show About Death



**Tuesday 29 October, 7.30pm**  
St Mary's Hall Studio Theatre  
Tickets £10.50

The Festival is delighted to welcome performer and natural burial-ground owner Liz Rothschild, who gives a thought-provoking and unexpectedly jolly show about mortality whilst weaving a coffin.

Liz is full of lively passion about death. Through personal stories, she exposes the taboos in our society, explaining how death has become disconnected from family, community and the wider society in our modern age. Funny, wise and moving, *Outside the Box* confronts the elephant in the room with grace and humour, asking its audience to embrace mortality and look on the bright side of life.

Supported by Pilgrims Hospices



## Chris Lintott

**Wednesday 30 October, 8pm**  
Great Hall, Kent College  
Tickets £10.50

Best-known as co-presenter of BBC's *Sky at Night*, Chris Lintott is Professor of Astrophysics at Oxford University and Principal Investigator for Zooniverse – a web-based project that allows hundreds of thousands of enthusiastic volunteers to contribute to science. Chris argues that humans still have unique capabilities to bring to bear even in the era of technological advance and artificial intelligence delivering data in a constant deluge. Chris describes the exciting revelations that citizens all over the world have made – from galaxies to pulsars, exoplanets to moons and penguin behaviour to old ships' logs – through their involvement in Zooniverse.

Sponsored by



**KENT COLLEGE**  
CANTERBURY  
Headline Sponsor



## Gina Rippon: The Gendered Brain

**Thursday 31 October, 8pm**  
Cathedral Lodge  
Tickets £10.50

For Gina Rippon, gender stereotypes are neither innate nor inevitable. A Professor of Cognitive Neuroimaging, here she demolishes the myth of the 'female brain' and how the subtle messages that children receive – Lego or dolls; sport or chatting – can change the way their brains form. To measure those changes, and then use the results to reinforce gendered play, is not scientific, nor fair.

'A gendered world will produce a gendered brain,' Rippon argues – which is important 'not just for women and girls, but for men and boys, parents and teachers, businesses and universities, and for society as a whole'.



# Opening Day Events

## Saturday 19 October

Whitefriars  
CANTERBURY

Canterbury  
College



### Festival Parade

12-1pm

High St, Canterbury | Free

Bursting with colour and sound, Canterbury Festival takes to the streets for the annual opening day parade. This year's parade celebrates fifty years since the Apollo Moon Landing, so expect a sea of costumes, banners and flags inspired by this historic step into the great unknown. Join in or watch the uplifting parade as it makes its way up the High Street and into Whitefriars, led by Fulston Manor and Northbourne Park school Samba bands and Buckswood Pipe Band.

### Anifest Workshop: Design a Minion

2-4pm

Hospitality Tent, Spiegeltent | Free

How do animators communicate the personalities of their most popular cartoon characters? This workshop will give you the chance to discuss elements of character design, and then put your ideas into practice by designing and drawing your own minion character. The workshops are run by Chris Pallant (Festival Director, Canterbury Anifest) and Christopher Holliday (Kings College University). Suitable for children aged 5-11 years. All children must be accompanied by an adult. Materials are provided.

### Canterbury Through My Eyes – Community Photo Exhibition

We are on the lookout for inspirational and creative photos that depict what Canterbury means to you. How do you see the city? Twenty shortlisted photos will be displayed in shop windows along the King's Mile ([thekingsmile.org.uk](http://thekingsmile.org.uk)) during the Festival and one lucky winner will receive a £150 voucher for the Canterbury Camera Centre and have their photo exhibited in the Lilford Gallery window.

To enter, just email your high-resolution photo to [charlotte@canterburyfestival.co.uk](mailto:charlotte@canterburyfestival.co.uk) by Monday 30 September. Don't forget to tag #canterburyfestcomp when sharing your photos on Facebook, Twitter and Instagram.

### Pop Up Performances – Keep Your Eyes Peeled!

In and around Whitefriars, Longmarket and Rose Square

**1-4pm:** Interact with the *before / die* board from Pilgrims Hospices

**1-4pm:** Watch out for flash mobs from Chestfield's Empire group.

**1-4pm:** Canterbury Christ Church University BA Hons Dance Education students share choreography using different techniques and styles.

**1-4pm:** Canterbury College students will be showcasing their creative skills at the opening event.

**1.40-2pm:** Northbourne Park School Choir sing a mixed repertoire of songs including pop, soul and classical in Rose Square.

**2.15-2.30pm:** Listen to the Bagpipes and Drums of the award-winning Buckswood Pipe Band in Rose Square.

**2.30-3.30pm:** Captain Breadbeard's Pop Up Comedy Show about a sailor with a beard made of bread that you knead to see. Made for adults, suitable for kids, may contain gluten. Canterbury Library, The Beaney.

**3.30-4pm:** Hersden Majorettes perform a baton twirling extravaganza to the latest upbeat songs.

All events taking place at the Spiegeltent are very relaxed with a well-lit auditorium, flexible seating, buggy park area, and plenty of space for smaller siblings to crawl and toddle.

Ticketed shows last 1 hour, unless otherwise specified. Under 1s go free.

## FAMILY FRIENDLY EVENTS

Family  
Programme  
sponsored  
by



2:30pm - Captain Breadbeard

## The Genetics of Superheroes

**Sunday 20 October, 3pm**  
St. Mary's Hall Studio Theatre  
Tickets £8.50



Television presenter and scientist, Simon Watt, returns to Canterbury after a sell-out show in 2017. This time he explores comic-book mutants – those heroes and villains with superhuman powers. From Wolverine to Magneto, their special abilities are genetic in their origin. Simon examines what real mutants are like, looking at topics including genetics, mutation, DNA, and mRNA and poses the question: could we one day use genetics to make us superhuman? Perfect for families who love science and superheroes.

For ages 13+

## Tales of Adriamus

**Tuesday 22 October, 1pm**  
Spiegeltent | Tickets £8.50



Adriamus is a group of professional musicians who specialise in creating musical events for children. Their performances include plenty of audience participation. Their aim is to show how music can touch on your emotions and enhance the telling of stories.

They work in collaboration with the children's author and illustrator Anthony Browne, (former Children's Laureate.) The programme includes some musical versions of his *Willy the Wimp* stories, complete with projected images from the books. Willy is a 'wimpy' chimp who builds himself up to face the world, only to find that he is the same person inside.

Join the Adriamus Ensemble for some musical games and storytelling. See how their music adds to Anthony Browne's *Willy the Wimp* stories. Meet Anthony himself and play some drawing games with him. Come ready to join in with this hour of musical fun.

Followed by a free family workshop for attendees only.  
Booking required due to limited capacity.

## Chicken Licken

**Wednesday 23 October, 1pm**  
Spiegeltent | Tickets £8.50



A baby chick is born and thinks the sky is falling down. On the way to tell the King, she meets Henny Penny, Ducky Lucky and Turkey Lurkey, but there's a shocking surprise! Chicken Licken grows up to be the Little Red Hen and asks her friends to help her make bread, but no one wants to play! Mixed into this recipe of food, puppets and music is the story of Little Red Hen and the sly Foxy Loxy. Will she outwit him and save her stuffing?

This one-person show combines a trilogy of classic tales from the Ladybird books - *Chicken Licken*, *The Little Red Hen* and *The Fox and the Hen* told with shadow and rod puppetry. Starting as a baking demonstration, the show rapidly becomes the adventures of a growing chick and her encounters with a hungry fox.

## Disgusting Songs for Revolting Children

**Thursday 24 October, 1pm**  
Spiegeltent | Tickets £8.50

A devilishly cheeky hour-long show with songs, poems and comedy for children of all ages by award-winning musical comedian Jay Foreman. You may have heard him on *BBC Radio 4*, *Radio 4 Extra*, *The One Show*, *London Live TV* and Dave Gorman's UK/Ireland tour. This family friendly show regularly sells out its entire runs at the Edinburgh Festival Fringe so book early!

Followed by a free family workshop for attendees only. Booking required due to limited capacity.

**'Disturbingly catchy... my daughter was still singing about caterpillar sick right up until bedtime'**

(*One4Review*)





## Captain Cauliflower and Marvin the Mischievous Moose

Friday 25 October, 1pm  
Spiegeltent | Tickets £8.50

Come and join the invincible Captain Cauliflower and his faithful companion Marvin on an unforgettable adventure, filled with extreme silliness and unquestionable danger. Marvin the Mischievous Moose offers Captain Cauliflower a mystical magic hat that gives him superpowers. We then follow his adventures into outer space and deep under the ocean, saving those in peril - but can he beat his arch nemesis, the evil and odorous Onion Man?

Followed by a free family workshop for attendees only. Booking required due to limited capacity.

'Dan and Neil are highly skilled, hilarious and simply two of the best clowns around'

(Manchester Clown Festival)



## Comedy Club for Kids

Saturday 26 October, 2pm  
Spiegeltent | Adults £11.50, Children £8.50

Cracking entertainment for everyone over the age of six, Comedy Club 4 Kids stars the best comedians doing what they do best... but without the rude bits! It's exactly like a normal comedy club, but in daylight hours, and with a higher chance of heckles of 'Why is that your face?'

'A highlight for children at the fringe... fun, rowdy feel of a proper comedy club'

(The Guardian)



## Baby Loves Disco

Sunday 27 October, 2pm  
Spiegeltent | Tickets £8.50

One of the Festival's hottest tickets, Baby Loves Disco returns for its seventh year having sold-out for all of its appearances at Canterbury Festival so far!

This is an opportunity for family members of all ages to get on the dance floor for some shiny, happy toddler-friendly fun. With prizes for best outfits, face painting, a dressing up box and a cheeky pint for dad, what better way is there to spend a Sunday afternoon?



All exhibitions are free and open throughout the Festival unless otherwise stated. Responsibility lies with the organisers of each exhibition and more information can be found on [canterburyfestival.co.uk](http://canterburyfestival.co.uk)

## VISUAL ARTS

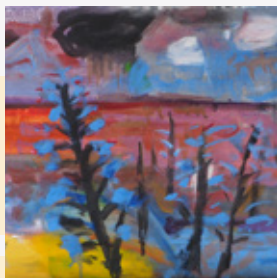


Image: Bower Barn Blue flowers at Seasalter (detail)

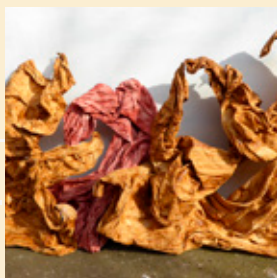


Image: Touch  
© Jacqueline Summer

### Great Bower Exhibition

This show is a unique chance to see a selection of well known artists' work. All the exhibitors have connections with, or live in Kent. It's a mixed show of paintings, ceramics, prints, and sculpture, displayed in a beautiful large space, which is only put together on alternate years.

#### Artists

Linda Clarke, Brian Oxley, Fred Cuming, Anne O'Driscoll, Patrick Crouch, Pete Rhodes, Germaine Dolan, Charlotte Molesworth, John Davis, Dame Zandra Rhodes, Catherine Farr, Rose Wylie, Euphemia McTavish, Lucy Rutter, Gabriel Nestfield, Emily Smith Polyblank, Jane Atkinson, Rose Dickenson, Mr Roberts, Max Rhodes, Maxine Chester, Stephanie Harrison  
**5 October – 2 November,**  
**Thursday – Sunday, 10am – 4pm**  
Great Bower, Shottenden Lane,  
Molash, Canterbury, CT4 8EZ

### Centrepieces Christie Cassisa

Christie studied Fine Art at Canterbury, majoring in sculpture and received a BA (Hons) in 1993. She now paints from home and sells her work in and around London. She has always been interested in art therapy, particularly in regards to mental health issues and currently leads on all Sculptural Workshops at Centrepieces.  
**15 – 27 October, 10am – 4pm daily (closed Mondays)**  
Creek Creative, Upper Gallery,  
1 Abbey Street, Faversham, Kent,  
ME13 7BE  
[creek-creative.org](http://creek-creative.org)

### Steve Bloom: South Africa in the Seventies

Personal and captivating photographs of South Africa in the seventies by renowned photographer Steve Bloom, exploring South Africa during the apartheid years.  
**19 October 2019 – 19 January 2020,**  
**Tuesday – Saturday 10am – 5pm,**  
**Sunday 11am – 4pm**  
The Beaney, 18 High Street,  
Canterbury, CT1 2BD  
[thebeaney.co.uk](http://thebeaney.co.uk)

### Canterbury Photographic Society Annual Exhibition

Members printed and digitally projected images will be on display with some items available to purchase.  
**19 October, 10am – 4pm**  
St Peter's Methodist Church Hall  
St Peter's Street, Canterbury,  
CT1 2BE  
[canterburyphotographicsociety.com](http://canterburyphotographicsociety.com)

### Paintings of the Peace Walk, The Western Front

1915, Alexander Gillespie, a young soldier, wrote home of his dream for A Peace Walk from Switzerland to the Sea.  
**19 October – 1 November,**  
**10am – 5pm**  
St. John The Baptist Church,  
Church Lane, Barham,  
Canterbury, CT4 6PB  
[ingridbax.com](http://ingridbax.com)

### TOUCH.

Jacqueline Summer, BA (Hons) Fine Art, University of Kent is a professional artist and art tutor. The exhibition consists of tactile, textured drawings, paintings and sculptural forms evoking skin, stone, wood and other surfaces.  
**22 October – 3 November,**  
**10am – 4pm daily (closed Mondays)**  
Creek Creative, Lower Gallery,  
1 Abbey Street, Faversham,  
Kent, ME13 7BE  
[creek-creative.org](http://creek-creative.org)

### Canterbury Three Cities Exhibition

70 prints from Canterbury and its two sister cities, Vladimir (Russia) and Bloomington-Normal, Illinois (USA) by local photographers.  
**24 October, 1pm – 6pm,**  
**25 & 26 October, 9.30am – 6pm**  
The Harbour Church,  
10 Harbour St, Whitstable,  
CT5 1AQ  
[canterbury3ca.org.uk/](http://canterbury3ca.org.uk/)

### Music in the Cathedral Archives and Library collections

This exhibition will showcase examples from the Cathedral's historic music collection. It will focus on the 'part books' which date from the 17th century onwards and contain the music for the Cathedral Choir.  
**Monday 28 October –**  
**Saturday 2 November, 2pm – 4pm,**  
**(2 Nov 10am – 12pm)**  
Howley-Harrison Library,  
Canterbury Cathedral  
Entrance to the exhibition is free, however the usual precincts charges apply



## David & Cathy Harvey, Janie Grout

David and Cathy Harvey are joined by their daughter Janie Grout in an exhibition showcasing three very different styles of work. David presents acrylic and oil paintings inspired by life on the Kent Coast, Cathy displays rich textiles, prints and embroidery and Janie shows her heavily collaged, mixed media paintings.

**29 October – 3 November,**  
**10am – 4pm daily**  
 (closed Mondays)  
**Creek Creative, Upper Gallery,**  
**1 Abbey Street, Faversham,**  
**Kent, ME13 7BE**  
[creek-creative.org](http://creek-creative.org)

## Festival! at The Fishslab

An art exhibition exploring and celebrating festivals and the emotions they evoke: shown through vibrant colour, interaction and different media.

**30 October – 4 November,**  
**10am – 4pm daily (10am – 8pm on**  
**31 October for Lantern Event)**  
**The Fishslab Gallery, 11 Oxford St,**  
**Whitstable, Kent, CT5 1DB**  
[fishslabgallery.co.uk](http://fishslabgallery.co.uk)

## Stories from Stelling Minnis

Stelling Minnis Art Group present paintings and crafts by local artists with teas, coffees, cakes and lunches.

**1 – 2 November, 10am – 5pm**  
**Stelling Minnis Village Hall,**  
**Bossingham Road, Canterbury,**  
**Kent, CT4 6AG**  
[facebook.com/pg/StellingMinnisArt](https://facebook.com/pg/StellingMinnisArt)

## October Opening:

**Sat 12 – Sun 13**  
**Sat 19 – Sun 20**  
**Sat 26 – Sun 27**

**11am – 5pm**

# EAST KENT ARTISTS' OPEN HOUSES



Image © Gill Wilson

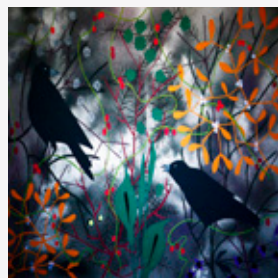


Image © Sue Sullivan

East Kent is home to an abundance of creative talent. Throughout the Festival local artists will be opening their houses and studios to the general public, **free of charge**. This is a great chance to see and buy unique artworks and meet the artists within their creative environment.

For up to date information and full trail listings, please visit [ekoh.org.uk](http://ekoh.org.uk)

**f** East-Kent-Open-Houses | **🐦** @ArtistsOpenHous

## Canterbury Trail

Maps & Leaflets: Canterbury Visitor Information Centre at The Beaney and Canterbury Festival Office

**Enquires: Lindsay West**  
[Lindsay.west.soord@live.co.uk](mailto:Lindsay.west.soord@live.co.uk)

## Faversham Trail

Maps & Leaflets: Fleur de Lis Tourist Information Centre on Preston Street and Creek Creative

**Enquiries: Anne MacLaren**  
[anne@creek-creative.org](mailto:anne@creek-creative.org)  
**01795 535 515**

## Whitstable Trail

Maps & Leaflets: Horsebridge Arts and Community Centre, The Library, Keams Yard Gallery and Whitstable Trust

**Enquiries: Sue Cavanagh**  
[openhousewhitart@outlook.com](mailto:openhousewhitart@outlook.com)

## Herne Bay Trail

Maps & Leaflets: Beach Creative on Beach Street, Herne Bay Seaside Museum and Herne Bay Library on the High Street.

**Enquiries: Mandy Troughton**  
[mctrout@hotmail.com](mailto:mctrout@hotmail.com)  
**07890 065 046**

## Margate & Cliftonville Trail

Maps & leaflets: Margate Visitor Information Centre, the Droit House, Stone Pier, Margate and all participating venues.

**Enquiries: Kim Conway**  
[kim.e.conway@gmail.com](mailto:kim.e.conway@gmail.com)

## Ramsgate & Broadstairs Trail

Maps & leaflets: Ramsgate Information Centre in Ramsgate Harbour, Nice things, Harbour Street and York Street Gallery, AiR, 18 Harbour Street in Ramsgate, Broadstairs Information Kiosk in Viking Bay, New Kent Art Gallery on Albion Street and all participating venues.

**Enquiries: Sarah Stokes**  
[sarahstokes37@gmail.com](mailto:sarahstokes37@gmail.com)

## Deal Trail

Brochures: The Astor Theatre In Stanhope Road, Deal Library off Queen Street and The Landmark In Trinity Road, Hope and Lane cafe and The Lane, 15 South Court, plus all participating venues.

**Enquiries: Kate Baker**  
[katebakermosaicmuse@icloud.com](mailto:katebakermosaicmuse@icloud.com)

Responsibility lies with the individual house organisers.

# Canterbury Festival is here all year!



Image © Dave Walsh

Canterbury Festival, the Festival Foundation and the Festival Friends programme a number of exciting events and activities throughout the year. Not only that, we also help other organisations deliver events including Shakespeare's Globe on Tour at Chilham Castle and Canterbury's Medieval Pageant.

You can keep up to date with our latest events, opportunities and workshops by joining our mailing list at [canterburyfestival.co.uk](http://canterburyfestival.co.uk); follow us on Facebook, Twitter and Instagram; or by joining the Festival Friends for just £25 a year.

Visit [canterburyfestival.co.uk](http://canterburyfestival.co.uk) for more information.

## Exclusive Tour of Chilham Castle

**Wednesday 18 September, 6pm**  
Chilham Castle, CT4 8DB  
Tickets £50

We unlock the doors to some of Chilham's secret rooms with local expert Michael Peters. Canapes and champagne will be served with thanks to Stuart Wheeler.

## Turner Contemporary on Turner Prize 2019

Canterbury Auction Galleries Talk

**Thursday 26 September, 6pm**  
Canterbury Auction Galleries, CT2 8AN  
Tickets £15

Find out more about Turner Prize 2019, the shortlisted artists and the impact the Prize is going to have on our communities.

## Poet of the Year Awards Evening

**Friday 4 October, 7.30pm**  
Colyer-Fergusson Hall, CT2 7NB  
Free

Join us in celebrating this year's Poet of the Year Competition with readings by this year's shortlisted poets and the prizegiving.

## The Hugo Maciejewski Memorial Lecture

Canterbury Auction Galleries Talk

**Thursday 21 November, 6pm**  
Canterbury Auction Galleries, CT2 8AN  
Tickets £15

Join the Festival Friends for the annual Hugo Maciejewski Memorial Lecture delivered by Dave Parker.

## Candlelit Tour of Canterbury Cathedral

**Thursday 21 November, 5.15pm**  
Canterbury Cathedral, CT1 2EH  
Tickets £75

An exclusive tour of Canterbury Cathedral and reception with the Dean of Canterbury.

## Lady Bracknell's Confinement

**Sunday 1 December, 3pm**  
Charlton Park, CT4 5JA  
Tickets £15

The extraordinary revelations of one of theatre's most pulverising snobs – and perhaps Oscar Wilde's most triumphant creation. Using all Wilde's words, this solo performance is funny, poignant and very (very) surprising!





**ST EDMUND'S  
SCHOOL**  
CANTERBURY

Pre-Prep | Junior | Senior | Sixth Form

# Be **all** you can be

Creativity is at the heart of all that we do



Proud to support the Canterbury Festival

[www.stedmunds.org.uk](http://www.stedmunds.org.uk)

Tickets for all walks are  
£9.50

Numbers are limited so  
please book early

Tickets are available  
from Festival Box Office,  
8 Orange St, Canterbury  
canterburyfestival.co.uk  
01227 457568

All durations are  
approximate

## WALKS



Dogs on leads welcome



May be muddy. Suitable  
footwear & clothing  
required



Some hills on route



Some stiles on route



Some steps on route



Uneven ground

### Friday 18 October

#### St. Mildred's Area of Canterbury - Saints, gardens, industry & historic buildings

St. Mildred's - one of the lesser known areas of Canterbury. Hear about saints, warfare, gardens, industry and pubs.

**Meet:** 2pm, Canterbury East Station (outside)

**Leader:** Jenny Watson-Bore

**Duration:** 1.5 - 2 hours (1.25 miles approx)

Canterbury Tourist Guides Ltd



### Saturday 19 October

#### Houses and Churches of the Nailbourne Valley from Bridge to Bekesbourne

Within easy reach of the City discover the delights of the Nailbourne Valley and walk some of the Via Francigena.

**Meet:** 10am, near The White Horse Inn, Bridge CT4 5LA

(grid ref: TR183544)

**Leader:** Cliff Huggett

**Duration:** 3 hours (5.5miles)

Canterbury Ramblers



### The Village of Bridge

Roman soldiers, Canterbury pilgrims, race-course visitors, stage-coach travellers - the ancient Watling Street brought them all through Bridge.

**Meet:** 2pm, Bridge Parish Church, CT4 5AR

**Leader:** Pauline Pritchard

**Duration:** Up to 2 hours (under a mile)

Friends of Canterbury  
Archaeological Trust



### Gruesome Canterbury Tales Walk

Hear stories and gruesome details from the darker side of Canterbury's ancient history. Not for the faint-hearted!

**Meet:** 2pm, Westgate Towers (outside Jaguar showroom)

**Leader:** Lenny Clark

**Duration:** 1.5 - 2 hours (1.25 miles approx)

Canterbury Tourist Guides Ltd



### Sunday 20 October

#### An Armchair Tour of Historic Tankerton and Whitstable

A virtual excursion, enabling those of limited mobility (and others) to see images of places they can't reach. Wheelchair accessible.

**Meet:** 2pm, Friends Meeting House, 6 The Friars, Canterbury, CT1 2AS

**Leader:** David Birmingham

**Duration:** 1.25 hours (within the building)

Friends of Canterbury Archaeological Trust

### Monday 21 October

#### St Martin's and Beyond

Visit St Martin's before walking through a historical, varied landscape to Fordwich, returning after a pause at the pub.

**Meet:** 9.45am, St Martin's Church CT1 1PW

(grid ref: TR158577)

**Leader:** Cliff Huggett

**Duration:** 3 hours (5 miles)

Canterbury Ramblers





### Explore St Dunstan's

The final steps of the Pilgrim Way, an ancient church, site of the world's first passenger railway – and much more.

**Meet:** 10am, St Dunstan's Church, CT2 8LS

**Leader:** Peter Berg

**Duration:** Up to 2 hours (under a mile)

Friends of Canterbury Archaeological Trust

### A Day in the Life of a Monk

An introduction to medieval monastic life in the Benedictine Priory of Canterbury

**Meet:** 2pm, The Buttermarket, CT1 2HW

**Leader:** Geoff Downer

**Duration:** Up to 2 hours

(within the cathedral precincts)

Friends of Canterbury Archaeological Trust

## Tuesday 22 October

### Blitzed Bits

A tour focusing on Canterbury's areas affected by the Second World War and the resulting changes of building and landscape. One slight incline (city wall).

**Meet:** 10am, Beaney House of Art & Knowledge, 18 High Street, CT1 2BD

**Leader:** Bob Collins

**Duration:** 1.5 hours (1.5 miles)

Blue Badge Tourist Guide

### The Roof Lines of Canterbury

What's above the shops? An invitation to look up at the varied rooflines, facades, and brickwork of Canterbury buildings.

**Meet:** 10am, The Buttermarket, CT1 2HW

**Leader:** Hubert Pragnell

**Duration:** Up to 2 hours (under a mile)

Friends of Canterbury Archaeological Trust

### Exploring King's School

Find out about the history and buildings of the King's School on a walk around the Cathedral Precincts.

**Meet:** 2pm, The Mint Yard Gate, The Borough, CT1 2EZ

**Leader:** Peter Henderson

**Duration:** Up to 2 hours

(within King's School Grounds)

Friends of Canterbury Archaeological Trust

## Wednesday 23 October

### Goodnestone and Chillenden Walk in the Steps of Jane Austen

Through woods and fields around Goodnestone and Chillenden, including the Serpentine path walked by Jane Austen on her visits here.

**Meet:** 10am, St Bartholomew's Church, The Street, Goodnestone, CT3 1PL (grid ref: TR255546)

**Leader:** Jenny Keaveney

**Duration:** 3 hours (6 miles)

Canterbury Ramblers



### Canterbury's Medieval Friaries

Canterbury was home to three orders of friars, but little now remains. We will explore where they lived.

**Meet:** 10am, outside The Marlowe Theatre, The Friars, CT1 2AS

**Leader:** Sheila Sweetinburgh

**Duration:** Up to 2 hours (Under a mile)

Friends of Canterbury Archaeological Trust



### The Old Dover Road and the Cricket Ground

Discover Roman Watling Street, Jerusalem's millwrights, the Holy Maid of Kent, medieval leprosy, Kent's cricket history and much more.

**Meet:** 2pm, Outside Fire Station, Upper Bridge St, CT1 2NH, by Riding Gate roundabout

**Leader:** Michael Steed

**Duration:** Up to 2 hours (about a mile)

Friends of Canterbury Archaeological Trust

## Thursday 24 October

### Women of Canterbury

From Queen Bertha to Catherine Williamson, Canterbury's first female mayor: see places associated with famous, infamous, and forgotten local women.

**Meet:** 10am, Lady Wootton's Green (off Broad Street), CT1 1NG

**Leader:** Doreen Rosman

**Duration:** Up to 2 hours (under a mile)

Friends of Canterbury Archaeological Trust

### The Stones of Reculver

Learn about the history, construction, and building materials of the Roman fort and medieval church – and see a dinosaur's footprint.

**Meet:** 2pm, Millennium cross outside King Ethelbert PH, Reculver, CT6 6SU (grid ref: TR226692)

**Leader:** Geoff Downer

**Duration:** Up to 2 hours (under a mile)

Friends of Canterbury Archaeological Trust

## Friday 25 October

### A Walk in and about St Augustine's College

A tour of the buildings of the former St Augustine's College, now part of the King's School.

**Meet:** 10am, Lady Wootton's Green

(off Broad Street), CT1 1NG

**Leader:** Peter Henderson

**Duration:** Up to 2 hours

(In and around College site)

Friends of Canterbury Archaeological Trust



### Canterbury's Medieval Hospitals

Some ancient almshouses still fulfil the functions envisaged by their medieval founders: an opportunity to visit and learn about them.

**Meet:** 2pm, outside Eastbridge Hospital, High Street, CT1 2BD

**Leader:** Sheila Sweetinburgh

**Duration:** Up to 2 hours (about a mile)

Friends of Canterbury Archaeological Trust



## Saturday 26 October

### Chilham Area of Outstanding Natural Beauty

Views of the Stour Valley from the North Downs Way, passing through Godmersham Park, returning via lovely old Chilham Mill.

**Meet:** 10am, Chilham Car Park off the A252. CT4 8DD (grid ref: TR066536)

**Leader:** Andrew Brooks

**Duration:** 3 hours

Canterbury Ramblers



## Sunday 27 October

### Victorian City: Splendour and Squalor

Pigs in backyards, sewage in the Stour, elegant shops and grandiose banks: find out about life in Victorian Canterbury

**Meet:** 2pm, Gas Street entrance to Canterbury Castle, CT1 2PR

**Leader:** Doreen Rosman

**Duration:** Up to 2 hours (under a mile)

Friends of Canterbury

Archaeological Trust

## Monday 28 October

### A Walk around Jewish Canterbury

Explore the lives of Canterbury's medieval Jews. See where their 18th and 19th century successors worked, worshipped and were buried.

**Meet:** 10am, Gas Street entrance to

Canterbury Castle, CT1 2PR

**Leader:** Kerstin Müller

**Duration:** Up to 2 hours

(a mile and a half)

Friends of Canterbury

Archaeological Trust

### The River Bridges, Mills and Waterways of Canterbury

There are at least 36 bridges in Canterbury. Try to visit them all and the sites of ancient mills.

**Meet:** 10am Dane John Gardens, Canterbury CT1 2RN

(grid ref: TR148574)

**Leader:** Cliff Huggett

**Duration:** 3 hours (5 miles)

Canterbury Ramblers

### A Literary Tour of the King's School

An opportunity to see the Maugham Library and Hugh Walpole's outstanding collection of English literary manuscripts.

**Meet:** 2pm, The Mint Yard Gate, The Borough, CT1 2EZ

**Leader:** Peter Henderson

**Duration:** Up to 2 hours

(within King's School Grounds)

Friends of Canterbury

Archaeological Trust



## Tuesday 29 October

### Frontline Folkestone

On the frontline of trade and of war, threatened by invasions, explore how over the centuries Folkestone reacted and survived.

**Meet:** 10am, The Station House, Folkestone Harbour, CT20 1QH

**Leader:** Liz Minter

**Duration:** Up to 2 hours (1.5 miles)

Friends of Canterbury Archaeological Trust



## Wednesday 30 October

### The Director's Walk

The Director of the Archaeological Trust can evoke the ancient city of Canterbury in a way that no-one else can.

**Meet:** 10am, The Buttermarket, CT1 2HW

**Leader:** Paul Bennett

**Duration:** Up to 2 hours (under a mile)

Friends of Canterbury Archaeological Trust

### Country, Churches and Creeks around Faversham

From the historic centre of Faversham, explore the countryside around Goodnestone and Graveney churches. Return via Nagden and Faversham creeks.

**Meet:** 10am, Faversham Guildhall, ME13 7AE

(grid ref: TR016613)

**Leader:** Ray Cordell

**Duration:** 3 hours (5.5 miles)

Canterbury Ramblers



## Thursday 31 October

### War Memorials of Canterbury

An exploration of memorials to the fallen of 19th and 20th century wars, in buildings as well as public spaces.

**Meet:** 10am, The Buttermarket, CT1 2HW

**Leader:** Cressida Williams

**Duration:** Up to 2 hours (under a mile)

Friends of Canterbury Archaeological Trust

## Friday 1 November

### Introductory Tour of the Dover Western Heights

Explore some of the most interesting parts of Dover's Western fortifications, including a short low passageway, with an experienced archaeologist. Moderately strenuous.

**Meet:** 10am, Public car park adjacent to St Martin's Battery off South Military Road, Dover.

(grid ref: TR313407)

**Leader:** Keith Parfitt

**Duration:** Up to 2 hours (1 mile)

Friends of Canterbury

Archaeological Trust



## Saturday 2 November

### 'Strangers' in Canterbury

Walloons, Flemings and Huguenots sought sanctuary in Tudor and Stuart Canterbury. Find out about them, their descendants, and their new home.

**Meet:** 10am, Entrance to St Augustine's Abbey, Longport, CT1 1PF

**Leader:** Doreen Rosman

**Duration:** Up to 2 hours

(under a mile)

Friends of Canterbury

Archaeological Trust

### Canterbury Rings Walk - An Introduction to the Middle Ring

Discover interesting buildings and countryside, with fine views of the Cathedral from the footpaths through and around the fringes of the City.

**Meet:** 10am, Marlowe Theatre, river side, CT1 2AS

**Leader:** Alan Robertson

**Duration:** 3 hours (6 miles)

Canterbury Ramblers







The Umbrella showcases a wide range of additional events happening during the Festival.

Responsibility for events in the Umbrella lies with the organisers of each event.

Information correct at time of printing.

## UMBRELLA

### Wednesday 16 October

#### Sweet Love and Tears:

##### The World of John Dowland

Quodlibet's five voices sing some of Elizabethan/Jacobean England's greatest hits, and explore the eventful and troubled life of their composer.

7.30pm, Chilham Castle, Chilham, CT4 8DB

Tickets: £20, including wine

Book: [jane.hr.farrell@gmail.com](mailto:jane.hr.farrell@gmail.com) / 07809 221 376

### Saturday 19 October

#### South Pacific

Rodgers and Hammerstein's classic and timeless musical set in an island paradise during World War II.

2.30pm & 7.30pm, Theatre Royal Margate, Addington Street, Margate, CT9 1PW

Tickets: £12 - £14

Book: 01843 292 795 / [theatreroyalmargate.com](http://theatreroyalmargate.com)

#### Literary Canterbury

Costumed actors present famous Canterbury authors' letters, diaries and poems through readings, songs, dances and playlets in this lively performance.

7.30pm, St Paul's Church, Church Street (St Paul's), Canterbury, CT1 1NH

Tickets: £8, concs £6

Book: [office@martinpaul.org](mailto:office@martinpaul.org) / 01227 768 072 / on the door

#### Diwali - Festival of Lights

Celebrate Diwali (Festival of Lights), welcome drinks, curry buffet and Bollywood entertainment.

7.30pm, Westgate Community Hall, Canterbury CT1 2BT

Tickets: Adults £15, Children between 8-12 £6, under 8s free

Book: [info@paulbabra.co.uk](mailto:info@paulbabra.co.uk)

#### Dad's Army Radio Show

Two actors play 25 characters in this brilliant staging of the classic TV comedy series.

7.30pm, Sarah Thorne Theatre Company, Broadstairs, CT10 2BN

Tickets: £15 advance, £17 on the door

Book: 01843 863 701 (10am to 12 noon daily) or [sarahthornetheatre.co.uk](http://sarahthornetheatre.co.uk)

### Saturday 19 - Sunday 20 October

#### Hobson's Choice

Matthew Townshend Productions presents a sparkling revival of one of the great classics of British Theatre, Harold Brighouse's immortal Lancashire comedy Hobson's Choice.

Sat 7.30pm, Sun 2.30pm,

The Malthouse Theatre, Malthouse Road, Canterbury, CT2 7JA

Tickets: £19.25 / Concessions £13.25

Book: [malthousetheatre.co.uk/](http://malthousetheatre.co.uk/)

### Saturday 19 - Sunday 27 October

#### Fright at the Museum: Witches and Wizards

Join the Beaney for a spooktacular event of Halloween fun including a range of themed activities especially for families.

For event times visit [thebeaney.co.uk](http://thebeaney.co.uk)

The Beaney, 18 High St, Canterbury CT1 2BD

Tickets: Free admission, donations welcomed. Additional paid activities available.

Please see

[canterburyfestival.co.uk](http://canterburyfestival.co.uk)

for up-to-date information

## Sunday 20 October

### Open Wide!

Dead Hoarse Writers and SaveAs Writers present an evening for lovers of the spoken word, celebrating poetry, prose and beyond!

7pm, The Pilgrims Hotel, 8 The Friars, Canterbury CT1 2AS  
Tickets: £5 on the door

### Ionian Chamber Music of Kent in Concert

An afternoon of French chamber music by Poulenc, Françaix and Saint-Saëns.

3pm, Sarah Thorne Theatre Company, Broadstairs, CT10 2BN

Tickets: £10 advance, £12 on the door  
Book: 01843 863 701 (10am to 12 noon daily) or sarahthornetheatre.co.uk

### Classic Album Sundays

#### Canterbury presents

#### Kate Bush: The Sensual World

With special guest Jade Like The Stone. A high quality playback on vinyl and a discussion of this classic Kate Bush album with singer songwriter Jade Williams of *The Voice* 2018.

3.30pm, Vinylstore Jr, 20 Castle Street, Canterbury CT1 2QJ

Tickets: £6 in advance  
(booking fees apply), £9 on the door  
Book: <http://tiny.cc/ug835y>

### Sketches from Kent

Rosie Johnston, Luigi Marchini, Derek Sellen, Fiona Sinclair and Mary Anne Smith will perform poems about Kent. Ticket includes a raffle ticket to win a bundle of signed books by the poets.

3pm, The Pilgrims Hotel, 8 The Friars, Canterbury CT1 2AS  
Tickets: £3 on the door

### Fungi Foray

Ever seen *Witches jelly?*, *Inkcap?* *Fairy-ring champignon?* A talk on toadstools, tea & cake, followed by foraging with a 'funguy'  
2.30pm, Charlton Place, Charlton Park, Bishopsbourne, Canterbury CT4 5JA  
Tickets: £15, conc £12  
Book: Reserve via [info@charlton-park.org](mailto:info@charlton-park.org) or 01227 831 355

## Thursday 24 October

### Exploring Art Philosophically – An Introduction

An introduction to Plato, de Beauvoir and a delicious meal. We will be considering the purpose and nature of art and the artist.

7pm, Grain Store Studio, Brenley Farm, Boughton-under-Blean, Faversham ME13 9LY  
Tickets: £17.50, concs £14  
Book: [bookwhen.com/sundancingarts](http://bookwhen.com/sundancingarts)

### Leonore Boulanger

Avant-folk French singer brings her trio to Free Range again. Beautiful, unsettling, ritualistic and joyous in equal measure.

8pm, Garage Coffee, 1-2 Jewry Lane, CT1 2NP  
Tickets: Free entry

## Friday 25 October

### Paul Zerdin's Puppet Party

Winner of *America's Got Talent* and 'The best ventriloquist Britain has discovered for many years...' *The Stage*.

7.30pm, Theatre Royal Margate, Addington Street, Margate, CT9 1PW

Tickets: £20 (plus booking fee)  
Book: 01843 292 795 or [theatreroyalmargate.com](http://theatreroyalmargate.com)

### An English Wine Challenge

A great opportunity to taste some of Kent's finest wines in a quiz tformat, led by Clive Barlow, local Master of Wine.

7pm, Westgate Hall, Westgate Hall Road, CT1 2BT  
Tickets: £30  
Book: [bit.ly/EWC251019](http://bit.ly/EWC251019)

## Friday 25 – Sunday 27 October

### After Electra - a black comedy by April De Angelis

Virgie is an acclaimed artist who on her 81st birthday insists she wants to die.

An emotional tug of war occurs!

Friday & Saturday 7.30pm, Sunday 2.30pm, Sarah Thorne Theatre Company, Broadstairs, CT10 2BN

Tickets: £11 advance, £13 on door  
Book: 01843 863 701 (10am to 12 noon daily) or [sarahthornetheatre.co.uk](http://sarahthornetheatre.co.uk)

## Saturday 26 October

### Philosophy and Comedy: A Panel Discussion on How to Do Things with Jokes

A free public event featuring philosophers including Julian Baggini and comedians including Andy White talking about philosophy, comedy and the connections between the two.

7.30pm, Aphra Theatre, University of Kent, Canterbury [research.kent.ac.uk/philosophy-and-comedy](http://research.kent.ac.uk/philosophy-and-comedy)

### Othello

Critically-acclaimed Pantaloons relocate Shakespeare's tragedy of jealousy and deception to a jazz-age setting, with music, intense drama and their inimitable brand of theatrical mischief.

7.30pm, The Malthouse Theatre, Malthouse Road, Canterbury, CT2 7JA

Tickets: £19.25, concs £13.25 (includes booking fee)  
Book: [malthousetheatre.co.uk/](http://malthousetheatre.co.uk/)

### There Was an Old Lady Who Swallowed a Fly

This magical show is the perfect treat for anyone aged 2 to 102!  
2.30pm, Theatre Royal Margate, Addington Street, Margate, CT9 1PW

Tickets: £10, concs £8, family of 4 £30 (plus booking fee)  
Book: 01843 292 795 or [theatreroyalmargate.com](http://theatreroyalmargate.com)

### An evening of poetry with Maggie Harris and Neelam Saredia-Brayley

SaveAs Writers present two outstanding poets in an evening of exhilarating performance along with an equally exciting open mic.  
6.30pm, St Mary Bredin Church, 59 Nunnery Fields, Old Dover Road  
Tickets: £4 on the door

### Midrash: Bible Stories as Inspiration for our Creative Writing

One-day workshop exploring five essential aspects of story devising.

9.30am – 3.30pm, 35 Pound Lane, Canterbury  
Tickets: £47  
Book: <https://bit.ly/2Zoj12X>

### Expand your Creative Writing with SaveAS Writers

5 different creative writing workshops covering many aspects of the art.

9.30am – 6.15pm, St Mary Bredin Church, 59 Nunnery Fields, Old Dover Road  
Tickets: £9 for each workshop, £40 for the day  
Book: Places are limited so booking is essential  
[Saveas@hotmail.co.uk](mailto:Saveas@hotmail.co.uk)

### The Gospel of Trickster

A poetry telling of tricks and delights from Nancy's latest book. Plus an open mic for your own tricksterish poems.

7.30pm, Quaker Meeting House, 6 The Friars, Canterbury, CT1 2AS  
Tickets: £5 on the Door or reserve tickets by emailing [nancycharley@hotmail.com](mailto:nancycharley@hotmail.com)

### Newarke Canterbury Tales

A complete remake of Chaucer's *Canterbury Tales*; multi-aged pilgrims walk from Newark to Canterbury in a musical comedy of verse.  
7pm, St Peter's Methodist Church, St Peter's Street, Canterbury CT1 2BE  
Tickets: £10, concs £7  
Book: [www.nidotherapy.com](http://www.nidotherapy.com)



## Monday 28 October

### Ancient Connections

In a beautiful church, enjoy a selection of a cappella sacred and secular harmonies, heralding the oncoming winter.

7pm, St Martin's Church, Canterbury

Tickets: By donation on the door

## Monday 28 October – Saturday 2 November

### Music in the Cathedral Archives and Library collections

This exhibition will showcase examples from the Cathedral's historic music collection. It will focus on the 'part books' which date from the 17th century onwards and contain the music for the Cathedral Choir.

2pm – 4pm, (2 Nov 10am – 12pm),

Howley-Harrison Library,

Canterbury Cathedral

Entrance to the exhibition is free, however the usual precincts charges apply

## Wednesday 30 October

### Institute of Heraldic and Genealogical Studies Open Day

Visit the School of Family History to see what courses we have to offer, use our library and talk to staff.

10am, IHGS, 79-82 Northgate,

Canterbury, CT1 1BA

Free Entry

## Thursday 31 October

### Bauhaus Now with Free Range Orchestra and University of the Creative Arts

The Bauhaus helped post-war Germany to imagine a new future for itself.

This multi-disciplinary performance celebrates this radical creativity.

8pm, Garage Coffee, 1-2 Jewry Lane, CT1 2NP

Free entry

## Friday 1 November

### Land and Sea – Artists' Journeys in East Kent

Exploring artists' work (from medieval images to Van Gogh) inspired by East Kent's diverse environments – accompanied by a delicious meal.

7pm, Grain Store Studio,

Brenley Farm,

Boughton-under-Blean,

Faversham, ME13 9LY

Tickets: £17.50, concs £14

Book: [bookwhen.com/sundancingarts](http://bookwhen.com/sundancingarts)

### No Man's Land by Harold Pinter

A chance meeting between two writers in a London pub leads to an alcohol-fuelled night of verbal sparring.

Ages 16+

7.30pm, Theatre Royal

Margate, Addington Street, Margate, CT9 1PW

Tickets: £16, concs £12,

restricted schools / students £6

(plus booking fee)

Book: 01843 292 795 or [theatreroyalmargate.com/](http://theatreroyalmargate.com/)

### Uniquely Pilgrims Fashion Exhibition in partnership with Canterbury College

Pilgrims Hospices and students from Canterbury College have created an exciting range of upcycled clothing and accessories called 'Uniquely Pilgrims'.

These items will be exhibited alongside vintage stock, available to purchase.

7.30pm – 9.30pm, Pilgrims Hospices, 56 London Road, Canterbury

Tickets: £5 suggested donation on the door

## Saturday 2 November

### Recreating the Past – A Creative Writing Workshop with Lunch included

Historical fiction writing at The Parrot's atmospheric 14th century upper room. Includes delicious lunch and a drink.

12pm, The Parrot,

1-9 Church Lane, St Radigans, Canterbury, Kent, CT1 2AG

Tickets: £48

Book: [bit.ly/2Pixn0e](http://bit.ly/2Pixn0e)

### Expand your Creative Writing with SaveAs Writers

Five different creative writing workshops covering many aspects of the art.

9.30am – 6.15pm,

St Mary Bredin Church,

59 Nunnery Fields,

Old Dover Road

Tickets: £9 for each workshop,

£40 for the day

Book: Places are limited so booking is essential [Saveas@hotmail.co.uk](mailto:Saveas@hotmail.co.uk)

### SaveAs Writers International Writing Competition 2019 Awards evening

Readings from shortlisted prose and poetry entries with special commissioned poems from Trevor Breedon, Jane Lovell, Mary Anne Smith.

6.30pm, St Mary Bredin Church,

59 Nunnery Fields,

Old Dover Road

Tickets: £4 on the door

### Edgar Allen Poe's

#### The Masque of the Red Death

At midnight during a lavish ball a mysterious, uninvited guest wreaks a terrifying revenge!

7.30pm, Sarah Thorne Theatre Company, Broadstairs, CT10 2BN

Tickets: £15 advance,

£17 on the door

Book: 01843 863 701

(10am to 12 noon daily) or

[sarahthornetheatre.co.uk](http://sarahthornetheatre.co.uk)





Supported using public funding by

**ARTS COUNCIL  
ENGLAND**

**Celebrating 10 years as  
Partner and Principal Sponsor**



## Made In Kent

Made In Kent is Canterbury Festival's framework supporting children, young people and early-career stage performers based in Kent.

Made in Kent runs six competitions with four live finals (Bursary Award, Schools Poetry, Comedy and Track Record) and two performances (Dance and Theatre) as part of the Festival programme. These competitions and live events are supported by Arts Council England and Kent County Council.

This year we have extended our development strand to include industry professional feedback and professional workshops from artists such as Lea Anderson MBE (The Cholmondeleys), Ash Mukherjee (Ash Dance Theatre) and Joel Magill (Bassist, Syd Arthur). In addition, we will be running free development days for young people interested in the arts during the school holidays, supported by the Kent Community Foundation.

We are delighted to welcome Canterbury Cathedral's Director of Music, David Flood, who will be chairing this year's Bursary judging panel. We are also very excited to team up with Canterbury Christ Church University, who are supporting us beyond their partner and principal sponsorship with performance and rehearsal space on their campus.

Our work with children and young people extends further, with poetry and arts workshops in primary and secondary schools - where we also deliver arts awards supported by **Forest of Bleas Rotary Club**. In addition we also offer training programmes for stage managers, young critic opportunities, university lectures, tickets and Q&A opportunities.

To find out more about Made In Kent and our learning and participation programme, visit [canterburyfestival.co.uk](http://canterburyfestival.co.uk)

For Made In Kent's Dance, Theatre, Comedy and Schools' Poetry events, visit p26.

For Made In Kent's Track Record showcase, visit p14.



# Birchington Orthodontic Practice



## Specialist Orthodontics for Musicians by Riccarda Kane

“ Riccarda can improve your confidence  
as a player as well as your smile!  
I highly recommend her! ”

Jess Gillam, Star Saxophonist

The Birchington Orthodontic Practice

[www.birchingtonortho.co.uk](http://www.birchingtonortho.co.uk)

7 Surrey Gardens, Birchington, Kent CT7 9SA

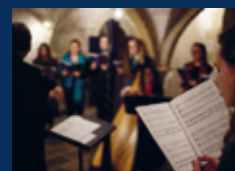
Telephone 01843 844600

GDC Registration Number: 64202

University of  
**Kent**

## Whatever you do... Make Music!

The University of Kent has a thriving programme of music-making for all students, together with staff and the local community – including a chorus, chamber choir, concert and big bands, symphony orchestra, jazz groups and music theatre. There is a whole range of concerts, both on the University campuses and also in the spectacular surroundings of Canterbury Cathedral. Workshops are held with internationally-acclaimed visiting musicians.



### Colyer-Fergusson Music Building, Canterbury

The award-winning Colyer-Fergusson Building was opened in December 2012. With its state-of-the-art facilities and flexible acoustics and seating, it is the venue for many of the University's major concerts and events and student music societies' rehearsals and activities.



### Music Scholarships Patron: Dame Anne Evans

Music Scholarships, usually between £1,000-£2,000 a year, are awarded to talented singers and instrumentalists studying for any degree at the University.

### For further information

Susan Wanless  
Director of University Music  
E: [S.J.Wanless@kent.ac.uk](mailto:S.J.Wanless@kent.ac.uk)  
T: 01227 823305  
[www.kent.ac.uk/music](http://www.kent.ac.uk/music)



## Big Eat Out

Whether you are looking for a long lunch or quick pre-show bite, this is the perfect opportunity to celebrate the city's delicious cuisine. For more information including bookings and opening times, please contact the restaurants directly. Just mention Canterbury Festival and The Big Eat Out to enjoy one of the meal deals listed.

### The Thomas Becket Pub

21 Best Lane  
Canterbury, CT2 8AF  
facebook.com/  
TheThomasBecketPubRestaurant  
Quote The Big Eat Out to  
receive 2 courses for £12

### The Red Lion Inn

75 High Street, Bridge  
Canterbury, CT4 5LB  
Tel: 01227 832213  
redlionbridge.co.uk

### Posillipo

16 The Borough  
Canterbury, CT1 2DR  
Tel: 01227 761471  
posillipo.squarespace.com

### Boho

27 High St, Canterbury  
CT1 2AZ  
Tel: 01227 458931  
bohocanterbury.co.uk  
Quote The Big Eat Out  
on arrival to receive 15%  
discount on all food.

### Wagamama

7-11 Longport  
Canterbury, CT1 2JS  
Tel: 01227 454307  
wagamama.com/  
restaurants/canterbury  
canterbury@wagamama.com

## Big Day Out

Whether you are visiting during the Festival or any other time of the year, there is so much to do in and around Canterbury. Take the opportunity to discover the hidden spaces and untold stories of this historic city, arrange a group trip or plan an adventure with friends. We can guarantee that these highlights will complement your cultural itinerary this October.

For more info visit [canterburyfestival.co.uk](http://canterburyfestival.co.uk)



### Canterbury Tourist Guides

Christ Church Gate  
The Precincts  
Canterbury CT1 2EE  
Tel: 01227 459779

[canterburyguidedtours.co.uk](http://canterburyguidedtours.co.uk)  
[guides@canterburytouristguides.co.uk](mailto:guides@canterburytouristguides.co.uk)

The heart of Canterbury can only be explored on foot. Canterbury Guided Tours provide entertaining 90-minute walking tours for visitors to the historic city. Join the daily tour to experience its charming character and the stories behind the famous city. Prices and group discounts can be found on the website.



### Godinton House & Gardens

Godinton Lane  
Ashford  
TN23 3BP  
Tel: 01233 643854

[godintonhouse.co.uk](http://godintonhouse.co.uk)  
[info@godintonhouse.co.uk](mailto:info@godintonhouse.co.uk)

Enjoy a tour of this delightful Jacobean house. Explore the 12 acres of beautiful gardens and parkland complete with tearoom serving homemade cakes. Free parking. Events throughout the year.



### The Kent Museum of Freemasonry

St Peter's Place  
Canterbury,  
CT1 2DA  
Tel: 01227 785625

[kentmuseumoffreemasonry.org.uk](http://kentmuseumoffreemasonry.org.uk)  
[masonicmuseum@btinternet.com](mailto:masonicmuseum@btinternet.com)

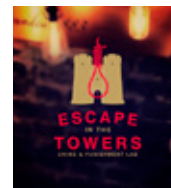
A rare and educational collection of exhibits of both national and international importance, this is one of the finest collections of Masonic material in the UK.



### Lewis Coaches

145 Nathan Way  
London SE28 OAB  
Tel: 0208 858 0031  
[lewiscoaches.co.uk](http://lewiscoaches.co.uk)  
[keith@gwffacilities.co.uk](mailto:keith@gwffacilities.co.uk)

For coach hire in South London and Kent call us. We have 16-49 and 70-seater education coaches. Company Established 1919.



### Escape in the Towers

The Pound and  
Westgate Towers  
Canterbury CT1 2TG  
Tel: 01227 458629

[escapeinthetowers.co.uk](http://escapeinthetowers.co.uk)  
[escape@onepoundlane.co.uk](mailto:escape@onepoundlane.co.uk)

Packed full of fun and adrenaline, you and your cohorts have just 60 minutes to escape Dr Wellington's Crime & Punishment Lab by solving clues and puzzles. Based in Canterbury's former city gaol.



# Big Sleepover

The Garden of England's idyllic views are a welcome bonus for those visiting Canterbury Festival. The Big Sleepover lists some of the best hotels, guest houses and holiday lets – check in and enjoy some excellent Kentish hospitality.

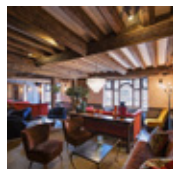
For more info visit [canterburyfestival.co.uk](http://canterburyfestival.co.uk)



## Holiday Inn Express

Upper Harbledown  
Canterbury, CT2 9HX  
Tel: 01227 865000  
[hiexpresscanterbury.co.uk](http://hiexpresscanterbury.co.uk)  
[gm@hiexpresscanterbury.co.uk](mailto:gm@hiexpresscanterbury.co.uk)

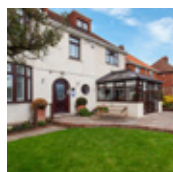
Holiday Inn Express Canterbury is ideal for your accommodation needs. Our hotel offers brand new, modern rooms equipped with Smart TVs, Wi-Fi and telephones. Breakfast is included.



## The Falstaff

8-10 St Dunstan's Street  
Canterbury, CT2 8AF  
Tel: 01227 462138  
[thefalstaffincanterbury.com](http://thefalstaffincanterbury.com)  
[stay@thefalstaffincanterbury.com](mailto:stay@thefalstaffincanterbury.com)

A few minutes' walk from the City Centre, the hotel offers 45 en-suite rooms, free Wi-Fi and residents' parking. Or just pop in to try the great cocktails in one of Canterbury's leading bars.



## Harriet House

Luxury Bed and Breakfast  
Market Way  
Canterbury, CT2 7JH  
Tel: 01227 457363  
[harriethouse.co.uk](http://harriethouse.co.uk)  
[enquiries@harriethouse.co.uk](mailto:enquiries@harriethouse.co.uk)

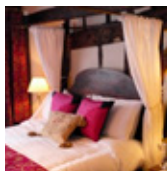
A friendly welcome awaits you at Harriet House, a 4-star B&B in the historic City of Canterbury. There is free secure onsite parking.



## Canterbury Cathedral Lodge

The Precincts, Canterbury, CT1 2EH  
Tel: 01227 865350  
[canterburycathedralodge.org](http://canterburycathedralodge.org)  
[stay@canterburycathedralodge.org](mailto:stay@canterburycathedralodge.org)

Set in beautiful, private grounds, guests benefit from stunning Cathedral views from their bedroom windows as well as free entrance to Canterbury's most famous landmark.



## House of Agnes

71 St Dunstan's Street  
Canterbury, CT2 8BN  
Tel: 01227 472185  
[houseofagnes.co.uk](http://houseofagnes.co.uk)  
[reception@houseofagnes.co.uk](mailto:reception@houseofagnes.co.uk)

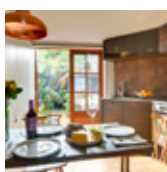
Award-winning 15th Century B&B with 16 beautiful en-suite rooms, cosy lounges, bar and large, peaceful garden. Based in the City Centre with free parking and Wi-Fi.



## Best Western Abbots Barton Hotel

36 New Dover Road  
Canterbury, CT1 3DU  
Tel: 01227 760341  
[abbotsbartonhotel.com](http://abbotsbartonhotel.com)

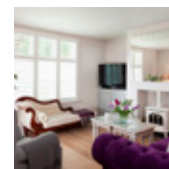
Set in the heart of Canterbury, ten minutes walk from the City Centre, this 3-star Gothic hotel has 53 well-appointed bedrooms, free Wi-Fi, onsite parking and a popular bar and restaurant. With two acres of lawned gardens, Best Western Abbots Barton Hotel is an idyllic setting for your visit to Canterbury.



## Kent and Sussex Holiday Cottages

12 King Street, Sandwich, CT13 9BT  
Tel: 01580 720770  
[kentandsussexcottages.co.uk](http://kentandsussexcottages.co.uk)  
[info@kentandsussexcottages.co.uk](mailto:info@kentandsussexcottages.co.uk)

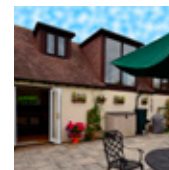
With a choice of over 300 gorgeous properties across Kent and Sussex, we have something to suit every taste and budget. Save £50 on 2019 stays when using code [bigsleepover50](http://bigsleepover50) online and over the phone.



## Bramley and Teal

Travel Chapter House  
Gammaton Road, Bideford  
Devon, EX39 4DF  
Tel: 01580 232255  
[bramleyandteal.co.uk/kent-cottages](http://bramleyandteal.co.uk/kent-cottages)  
[info@bramleyandteal.co.uk](mailto:info@bramleyandteal.co.uk)

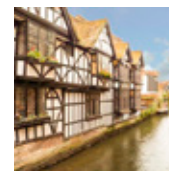
With over 100 properties across Kent and Sussex, Bramley & Teal offer the perfect self-catering getaway on the south coast.



## Holiday Cottages

Travel Chapter House  
Gammaton Road  
Bideford, Devon, EX39 4DF  
Tel: 01237 459888  
[holidaycottages.co.uk/kent](http://holidaycottages.co.uk/kent)  
[info@holidaycottages.co.uk](mailto:info@holidaycottages.co.uk)

[Holidaycottages.co.uk](http://Holidaycottages.co.uk) offers a beautiful selection of properties across Kent, perfect for families, large groups and couples. Dog-friendly cottages available.



## Sykes Holiday Cottages

1 City Place, Queens Road  
Chester, CH1 3BQ  
Tel: 01244 356666  
[sykescottages.co.uk](http://sykescottages.co.uk)

A great collection of self-catering cottages in Canterbury and across the wider Kent region. Your perfect place awaits.



## Canterbury Reach Lodge Retreat

Stone Street  
Canterbury, CT4 5PL  
Tel: 01227 701110  
[darwinescapes.co.uk/parks/canterbury-reach-lodge-retreat](http://darwinescapes.co.uk/parks/canterbury-reach-lodge-retreat)

With opulent lodge accommodation surrounded by stunning Kent countryside, Canterbury Reach is the perfect relaxing sanctuary in which to escape the stresses of everyday life.

# MALTHOUSE

COMING IN OCTOBER  
TO THE MALTHOUSE THEATRE



**SATURDAY**  
**19<sup>th</sup> October. 7.30<sup>PM</sup>**

**&**

**SUNDAY**  
**20<sup>th</sup> October. 2.30<sup>PM</sup>**

**SATURDAY**  
**26<sup>th</sup> October. 7.30<sup>PM</sup>**



STUNNING NEW  
VENUE OPENS  
IN THE CITY

DAPHNE ORAM  
CREATIVE ARTS  
BUILDING

Canterbury Christ Church University's  
new city venue with inspiring new spaces  
and facilities for arts audiences to enjoy.



for more information and box office please visit:  
**[www.malthousetheatre.co.uk](http://www.malthousetheatre.co.uk)**  
Malthouse Theatre, Malthouse Road, Canterbury, CT2 7JA

**[www.canterbury.ac.uk/](http://www.canterbury.ac.uk/)**  
**arts-and-culture**

Celebrating 10 years as  
Partner and Principal Sponsor  
of Canterbury Festival



## Acknowledgements

### Patron

The Very Revd Dr Robert Willis,  
Dean of Canterbury

### President

Peter Williams MBE

### Vice Presidents

Anonymous  
Brigadier and Mrs Maurice Atherton  
Professor Stephen Bann  
Mr and Mrs Mike and Sandy Baxter  
Mrs James Bird  
Mr Timothy Brett  
Mr and Mrs Graham & Maggie Brown  
Mr and Mrs Martin & Virginia Conybeare  
Dr Kate Neales and Mr Peter Cox  
Cllr and Mrs Nick and Monica Eden-Green  
Mrs Jane Edred Wright  
Mr and Mrs Alan and Diana Forrest  
David and Cilla Freud  
Mr and Mrs Charles and Diane Gaskain  
Mr and Mrs Philip and Patti Havers  
Mr and Mrs Peter and Sally Hawkes  
Tom Head and Kylie Sanderson  
Mr Andrew Ironside  
Mr and Mrs George and Christine Kennedy  
Mr and Mrs Roddy and Caroline Loder-Symonds  
Mr and Mrs James and Jane Loudon  
Mr and Mrs David and Mimi Macfarlane  
Prof Keith Mander  
Mr and Mrs Ian and Juliet Odgers  
Mr Richard Oldfield  
Mr and Mrs David and Alicia Pentin  
Jane Plumptre  
Mr and Mrs John and Julia Plumptre  
Mr and Mrs David and Anne Spencer  
David Starkey CBE, FSA, FRHistS  
Mr Peter Stevens  
Mr Richard Sturt OBE  
Mrs Fiona Sunley  
Lady Swire  
Mrs Camilla Swire  
Lady Juliet Tadgell  
Mrs Jo Taylor Williams  
Mrs Loba Van der Bilj  
Mr and Mrs Charles and Sally Villiers  
Mr Stuart Wheeler  
Sir Robert and Lady Worcester KBE

### Trustees

Chairman Prof Keith Mander  
Treasurer Hugh Summerfield  
Co Secretary Dr Kate Neales  
Cdre Martin Atherton OBE  
Hugo Barton  
Colin Carmichael  
Celia Glynn-Williams  
Peter Hermitage QPM  
Andrew Ironside  
Prof Dan Lloyd  
Air Mshl Chris Nickols CB CBE DL  
Anthony Pratt  
Camilla Swire  
Tony Walder  
Dr Gillian Youngs

### Hon Solicitor

Tim Townsend, Gardner & Croft

### Festival Administration

|                       |                   |
|-----------------------|-------------------|
| Festival Director     | Rosie Turner      |
| Deputy Director       | Amanda McKean     |
| Marketing Manager     | Rob Smith         |
| Participation Manager | Charlotte Chapman |
| Administrator         | Tina Austen       |
| Business Manager      | Alison Mannering  |
| Programme Coordinator | Lauren Woodrow    |
| Production            | Mark Stampe       |

### With thanks to

Kylie Sanderson, Abi Fiddler and Alan Payne

Cover &  
Brochure Design

nebulodesign.com



Please consider  
the environment  
and recycle your  
brochure after use.



Canterbury Festival (Trading name of  
Canterbury Theatre and Festival Trust)  
Registered in England No. 1480595  
Registered Charity No. 279714



Image © Tim Stubbings



## Festival Foundation

The Festival is indebted to the Foundation Board and Friends Committee for their on-going dedication to fundraising.

The Canterbury Festival Foundation supports the long-term development of the Festival and awards Bursaries to young musicians in Kent.

If you value the Arts in Kent and are thinking of making or amending your Will, please consider leaving a legacy to the Foundation (charity no. 1097824).

## Become a Friend today and help make Canterbury Festival happen!

By becoming a Festival Friend, you will be able to skip the queue! Friends receive their brochure in advance and benefit from a two week priority booking period, allowing them to plan and book their Festival experience before the masses. Not only that, Friends also receive last-minute deals, special offers, invitations to exclusive events and help support the Festival's learning and participation programme; engaging children, young people and adults from a wide spectrum of backgrounds in creativity activity.

Membership costs just £25 for single, £35 for a couple and £40 for a family. Join the Friends by contacting Tina at [tina@canterburyfestival.co.uk](mailto:tina@canterburyfestival.co.uk) or by calling 01227 452853.

## Volunteers

We are incredibly grateful to our wonderful and dedicated team of volunteers who work as stewards, programme sellers and bar staff during the Festival period. Without them, it would be impossible for us to produce the annual Festival.

If you would like to join the volunteering team, contact Tina at [tina@canterburyfestival.co.uk](mailto:tina@canterburyfestival.co.uk)



Image © Peter Cook



Festival  
Foundation

# The Canterbury Festival Foundation

## Securing the Future of Canterbury Festival

The work of the Foundation is crucial to securing the future of the Festival. With government funding for the Arts disappearing, the Foundation has undertaken to contribute to the Festival's annual running costs to help redress the gap between what the Festival actually costs, and the amount that can be raised through ticket sales.

Together with the Festival Friends, the Foundation organises fundraising events throughout the year – some of which are detailed on p41. These are open to anyone to enjoy and are a great way to meet like-minded others and become part of the 'Festival Family'.

The Foundation is dedicated to the future not only of the Festival – but to helping develop the talents of the next generation of performers. The annual Bursary Competition (detailed on p15) awards a prize of £2000 – to be spent on tuition, a new instrument or even a smart outfit for the concert platform! Previous winners have told us it's a really helpful gift for young, ambitious musicians.

## How can you help?

### Join the Friends

For a minimum subscription of £25 a year you can enjoy Priority Booking for Festival events, special discounts and regular updates from the team at Festival House. There are opportunities to give a little bit more and become an even better Friend!

### Make a Gift

Any donation – large or small – will go towards events in the annual Festival or our work in the community. It's easy to donate via the website [canterburyfestival.co.uk](http://canterburyfestival.co.uk) or call Tina on 01227 452853 to discuss. Remember that – thanks to Gift Aid – an additional 25% value is added to your donation if you are a UK taxpayer. Please ensure we have your details to claim this benefit.

### Become a Vice President

Vice Presidents are a group of philanthropic supporters who are very close to the Festival's heart. They lend their advice, their connections, their ideas and their loyal friendship to the charity for a period of four years or more. Many have been involved for decades; others have joined recently to assist with our funding challenges. To learn more about this very special circle please contact Amanda McKean [amanda@canterburyfestival.co.uk](mailto:amanda@canterburyfestival.co.uk)

### Leave a Legacy

If you are enjoying the Canterbury Festival and would like its work to continue into the future, please consider leaving a legacy gift of cash, property or shares to the Festival Foundation. Charitable gifts are free from Inheritance Tax and may also reduce other taxes. Thank you for helping the Festival today, and into the future.

Canterbury Festival Foundation Charity no 1097824.



# CANTERBURY

200 metres

## Key

--- Pedestrian routes

## By Bus



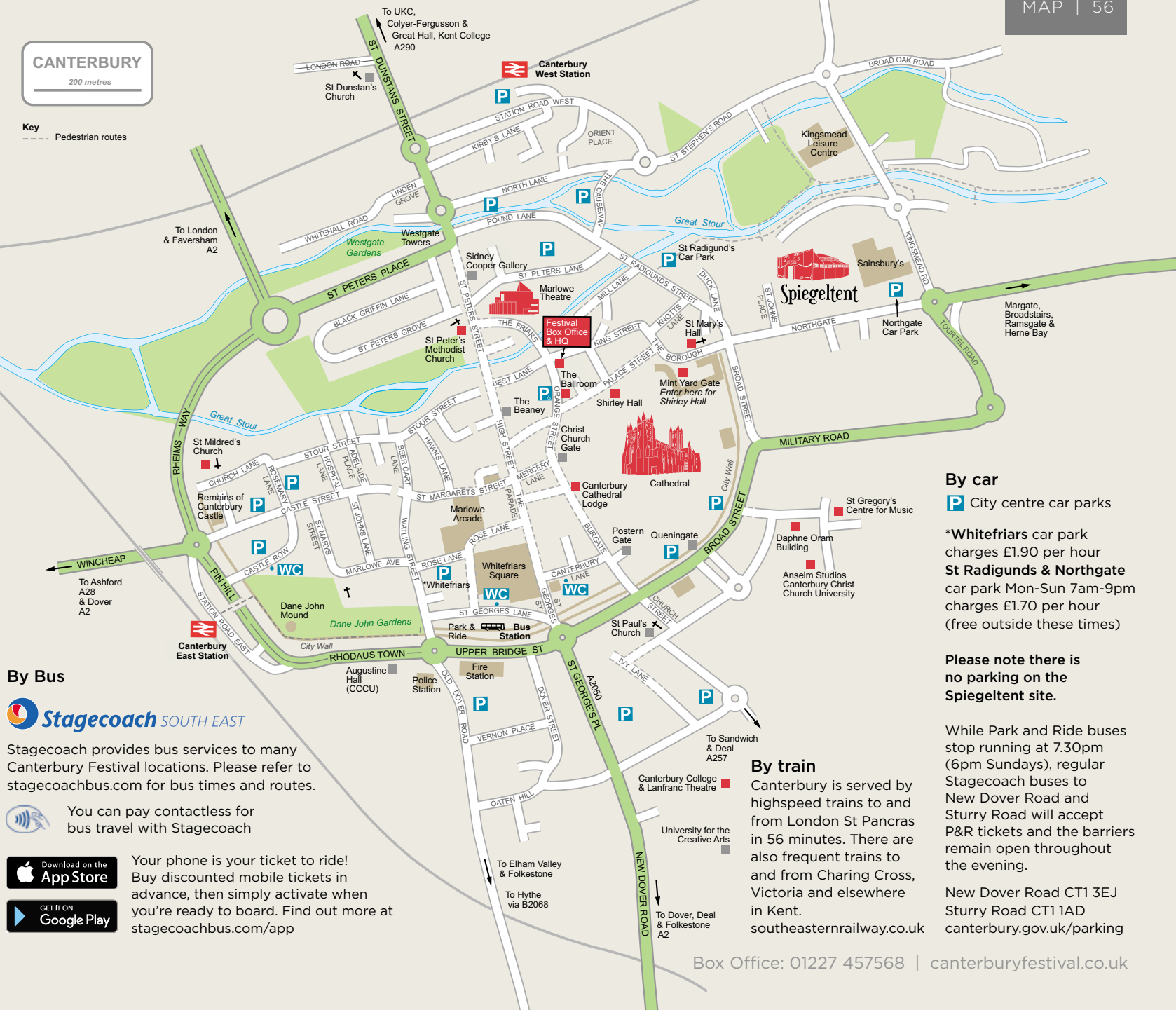
Stagecoach provides bus services to many Canterbury Festival locations. Please refer to [stagecoachbus.com](http://stagecoachbus.com) for bus times and routes.



You can pay contactless for bus travel with Stagecoach



Your phone is your ticket to ride! Buy discounted mobile tickets in advance, then simply activate when you're ready to board. Find out more at [stagecoachbus.com/app](http://stagecoachbus.com/app)



## By car

**P** City centre car parks

**\*Whitefriars car park** charges £1.90 per hour  
**St Radigunds & Northgate** car park Mon-Sun 7am-9pm charges £1.70 per hour (free outside these times)

Please note there is **no parking on the Spiegel tent site.**

While Park and Ride buses stop running at 7.30pm (6pm Sundays), regular Stagecoach buses to New Dover Road and Sturry Road will accept P&R tickets and the barriers remain open throughout the evening.

New Dover Road CT1 3EJ  
 Sturry Road CT1 1AD  
[canterbury.gov.uk/parking](http://canterbury.gov.uk/parking)

## By train

Canterbury is served by highspeed trains to and from London St Pancras in 56 minutes. There are also frequent trains to and from Charing Cross, Victoria and elsewhere in Kent.  
[southeasternrailway.co.uk](http://southeasternrailway.co.uk)

Priority booking  
for Festival Friends

**Opens**  
**Monday 15 July, 11am**

General booking

**Opens**  
**Monday 29 July, 11am**

## HOW TO BOOK TICKETS

This year we are delighted to launch our own Box Office with an online, in-person and over the phone service available. The Box Office is situated at Festival House.

The majority of events will now be bookable through the Canterbury Festival Box Office.

Tickets for events taking place at The Marlowe must be purchased from The Marlowe Box Office.

Ticketed Umbrella events should be booked via each individual organiser.



Keep up to date by liking and following @canterburyfest

# Canterbury Festival Box Office

## ONLINE

canterburyfestival.co.uk  
Secure online booking for Canterbury Festival events, available 24 hours a day.

## BY PHONE

01227 457568

## IN PERSON

Canterbury Festival Box Office  
Festival House  
8 Orange Street  
Canterbury, Kent CT1 2JA

## OPENING TIMES

The Canterbury Festival Box Office is open for in-person and phone bookings:  
15 July – 13 September: Monday – Friday, 11am – 4pm  
16 September – 18 October: Monday – Friday, 11am – 4pm / Saturdays 10am – 2pm  
19 October – 2 November: Monday – Sunday, 11am – 4pm with tickets available on the door of each event where available.

## PAYMENT METHODS

Card payments can be made online, by phone or at our Box Office. Cash payments can be made at the Box Office. Cheques payable to Canterbury Festival.

## TICKET COLLECTION AND POSTAGE

Tickets can be collected from the Box Office during opening hours up to 24 hours prior to the event. On the day of the event, tickets will be available for collection from the venue a minimum of 30 minutes beforehand.

Please note that there is an additional charge of £1 to receive your tickets by post. Please check your tickets on receipt.

## Canterbury Festival Ticket Information

### CONCESSIONS

Concessions, where applicable, are detailed in the ticket price sections of each listing. Proof of status may be required.

### ACCESS

The Festival aims to provide excellent access for our visitors. We are however, restricted by the design of the some of the older buildings, meaning that our venues have varying levels of accessibility. An access overview can be found on p.58 and a full access guide can be downloaded at [canterburyfestival.co.uk](http://canterburyfestival.co.uk). Alternatively, contact the Box Office to discuss your access needs. The Festival cannot accept responsibility for accessibility of Exhibitions, Artists' Open Houses Trails and Umbrella events.

### REFUND POLICY

In unavoidable circumstances, Canterbury Festival reserves the right to alter artists or programme content. We regret that tickets cannot be exchanged or money refunded unless an event is cancelled. To view the full terms and conditions visit [canterburyfestival.co.uk](http://canterburyfestival.co.uk)

## Box Office for Events at The Marlowe

The Marlowe Theatre  
The Friars  
Canterbury  
Kent CT1 2AS

Tel: 01227 787787  
Opening times:  
Mon, 9am – 6pm  
Tue, 10am – 6pm  
Wed – Sat, 9am – 6pm

[marlowetheatre.com](http://marlowetheatre.com)

## Your Visit to the Festival

**Venue Map:** See page p.56  
For venue locations and transport links.

Train travel with Southeastern:  
[southeasternrailway.co.uk](http://southeasternrailway.co.uk)

Bus travel with Stagecoach:  
[stagecoachbus.com](http://stagecoachbus.com)

**The Big Day Out:** Between Festival events, there's plenty to keep you busy, see p51

**The Big Eat Out:** Take a moment to explore the Festival's restaurant guide on p51

**The Big Sleepover:** For Festival recommendations on places to stay, visit p52








# Access & Venue Information

The Festival aims to provide excellent access for our visitors. We are however, restricted by the design of some of the older buildings meaning that our venues have varying levels of accessibility.

A full access guide can be downloaded from [canterburyfestival.co.uk](http://canterburyfestival.co.uk).

A paper copy can be requested from the Box Office on 01227 457568.

| VENUE                                                                             |  |  |  |  |  | NOTES                                                                                     |
|-----------------------------------------------------------------------------------|-----------------------------------------------------------------------------------|-----------------------------------------------------------------------------------|-----------------------------------------------------------------------------------|-----------------------------------------------------------------------------------|-------------------------------------------------------------------------------------|-------------------------------------------------------------------------------------------|
| <b>The Ballroom</b><br>15 Orange Street, CT1 2JA                                  |                                                                                   |                                                                                   |                                                                                   |                                                                                   |                                                                                     | Not suitable for wheelchair users. Bar on site.                                           |
| <b>Canterbury Cathedral</b><br>The Precincts, CT1 2EH                             | ✓                                                                                 | ✓                                                                                 | ✓                                                                                 | ✓                                                                                 |                                                                                     | No Blue Badge Parking available, closest drop off point The Buttermarket.                 |
| <b>Canterbury Cathedral Lodge</b><br>The Precincts, CT1 2EH                       | ✓                                                                                 | ✓                                                                                 | ✓                                                                                 | ✓                                                                                 |                                                                                     | Bar on site. No Blue Badge Parking available, closest drop off point The Buttermarket.    |
| <b>Colyer-Fergusson Hall</b><br>University of Kent, CT1 7NB                       | ✓                                                                                 | ✓                                                                                 | ✓                                                                                 | ✓                                                                                 | ✓                                                                                   | Free parking after 5pm weekdays and all weekend. Bar & restaurant on site.                |
| <b>The Great Hall</b><br>Kent College, Whitstable Road, CT2 9DT                   |                                                                                   | ✓                                                                                 | ✓                                                                                 | ✓                                                                                 | ✓                                                                                   | Wheelchair seating.                                                                       |
| <b>St Gregory's Centre for Music</b><br>North Holmes Road, CT1 2EH                | ✓                                                                                 | ✓                                                                                 | ✓                                                                                 | ✓                                                                                 | ✓                                                                                   | Free car park.                                                                            |
| <b>Marlowe Theatre</b><br>The Friars, CT1 2AS                                     | ✓                                                                                 | ✓                                                                                 | ✓                                                                                 | ✓                                                                                 | ✓                                                                                   | Bar & restaurant on site.                                                                 |
| <b>St Mary's Studio Theatre</b><br>The Borough, CT1 2EZ                           |                                                                                   | ✓                                                                                 |                                                                                   |                                                                                   |                                                                                     | No late admittance after the show has started.                                            |
| <b>St Mildred's Church</b><br>2 Church Lane, CT1 2PP                              | ✓                                                                                 | ✓                                                                                 | ✓                                                                                 |                                                                                   |                                                                                     |                                                                                           |
| <b>St Peter's Methodist Church</b><br>St Peter's Street, CT1 2BE                  |                                                                                   | ✓                                                                                 | ✓                                                                                 | ✓                                                                                 |                                                                                     | Limited on street blue badge parking on Tower Way and at Orange Street Disabled Car Park. |
| <b>Shirley Hall, The King's School</b><br>Through Mint Yard, The Borough, CT1 2EZ | ✓                                                                                 | ✓                                                                                 | ✓                                                                                 | ✓                                                                                 | ✓                                                                                   | Limited parking for Blue Badge holders only. Communal wheelchair available. Bar on site.  |
| <b>Spiegeltent</b><br>Canterbury Coach Park, Kingsmead Road, CT1 1BW              |                                                                                   | ✓                                                                                 |                                                                                   | ✓                                                                                 |                                                                                     | No parking on site. Bar & food stalls on site. Food may be consumed in Hospitality Tent.  |
| <b>Stacey Building, University of Kent</b><br>CT2 1NJ                             | ✓                                                                                 |                                                                                   |                                                                                   | ✓                                                                                 | ✓                                                                                   | Free parking after 5pm weekdays and all weekend.                                          |

| WEEK 1                                      | Saturday<br>19 Oct                                                                                                                                                         | Sunday<br>20 Oct                                                  | Monday<br>21 Oct                                                                                                          | Tuesday<br>22 Oct                                                                                                   | Wednesday<br>23 Oct                                                                                                                                                             | Thursday<br>24 Oct                                                                                                                                          | Friday<br>25 Oct                                                                                                                               | Saturday<br>26 Oct                                                                                      |
|---------------------------------------------|----------------------------------------------------------------------------------------------------------------------------------------------------------------------------|-------------------------------------------------------------------|---------------------------------------------------------------------------------------------------------------------------|---------------------------------------------------------------------------------------------------------------------|---------------------------------------------------------------------------------------------------------------------------------------------------------------------------------|-------------------------------------------------------------------------------------------------------------------------------------------------------------|------------------------------------------------------------------------------------------------------------------------------------------------|---------------------------------------------------------------------------------------------------------|
| The Marlowe Theatre                         |                                                                                                                                                                            |                                                                   |                                                                                                                           |                                                                                                                     | Laura Mvula<br>7.30pm - p.6                                                                                                                                                     | Afro-Cuban All Stars<br>7.30pm - p.7                                                                                                                        | Ward Thomas<br>7.30pm - p.10                                                                                                                   | Jack Savoretti<br>7.30pm - p.12                                                                         |
| Canterbury Cathedral                        | The Sixteen:<br>Monteverdi Vespers of 1610<br>(Nave) 7.30pm - p.2                                                                                                          | Festival Evensong<br>(Quire)<br>3.15pm - p.3                      |                                                                                                                           |                                                                                                                     |                                                                                                                                                                                 |                                                                                                                                                             |                                                                                                                                                | The Keys of Canterbury<br>(Nave)<br>7.30pm - p.13                                                       |
| Festival Spiegeltent, Canterbury Coach Park | Anifest:<br>Design a Minion<br>2-4pm - p.36<br>Los Pacaminos with Paul Young<br>8.30pm - p.3                                                                               | Rock Choir<br>11am - p.3<br>FB Pocket Orchestra<br>7.30pm - p.3   |                                                                                                                           | Tales of Adramus<br>1pm - p.37<br>The Jazz of Judy Garland<br>8pm - p.5                                             | Chicken Licken<br>1pm - p.37<br>Card Ninja<br>7pm - p.23<br>Dom Martin<br>9.30pm - p.5                                                                                          | Disgusting Songs for Revolting Children<br>1pm - p.38<br>Casus: Knee Deep<br>7pm - p.24<br>Le Gateau & Jonny Woo<br>9.30pm - p.25<br>Sardam<br>9.30pm - p.8 | Captain Cauliflower & Marvin Moose<br>1pm - p.38<br>Casus: Knee Deep<br>7pm - p.24<br>Orphan Colours<br>9.30pm - p.14                          | Comedy Club for Kids<br>2pm - p.38<br>Casus: Knee Deep<br>7pm - p.24<br>Orphan Colours<br>9.30pm - p.14 |
| Shirley Hall, The King's School             |                                                                                                                                                                            | I, Clara<br>7.30pm - p.4                                          |                                                                                                                           | Finghin Collins<br>7.30pm - p.4                                                                                     |                                                                                                                                                                                 |                                                                                                                                                             |                                                                                                                                                |                                                                                                         |
| St Mary's Hall Studio Theatre               |                                                                                                                                                                            | The Genetics of Superheroes<br>3pm - p.34                         | Orlando<br>7.30pm - p.23                                                                                                  |                                                                                                                     | Those Magnificent Men<br>7.30pm - p.23                                                                                                                                          |                                                                                                                                                             |                                                                                                                                                | Mad Hatter's Tea Party<br>7.30pm - p.25                                                                 |
| St Gregory's Centre for Music               |                                                                                                                                                                            |                                                                   | Escapades<br>1.10pm - p.21                                                                                                | Chansons D'Amour: Aspects of Love<br>1.10pm - p.21                                                                  |                                                                                                                                                                                 | Trio 'Manor Manouche'<br>1.10pm - p.21                                                                                                                      |                                                                                                                                                |                                                                                                         |
| Cathedral Lodge                             |                                                                                                                                                                            |                                                                   | William Clegg: Under the Wig<br>5.45pm - p.30<br>Emma Byrne: The Science of Bad Language<br>8pm - p.35                    | James Wong<br>5.45pm - p.30<br>Mig Kimpton: Floral Curiosity<br>8pm - p.33                                          | Jack Brown: Inside No. 10<br>5.45pm - p.30                                                                                                                                      | Christopher Joll: The Drum Horse in the Fountain<br>5:45pm - p.31                                                                                           | Fergus Butler-Gallie: A Field Guide to the English Clergy<br>5:45pm - p.31                                                                     |                                                                                                         |
| Other venues                                | City Centre from midday<br>Opening Day Celebration p. 36<br>Stacey Building University of Kent<br>Agar Art 2pm - p.34                                                      | The Ballroom<br>Cocktail Laboratory<br>6.30pm<br>p.34             |                                                                                                                           |                                                                                                                     | Daphne Oram Building<br>CCCU<br>Commercial Music:<br>Full Flow<br>1.10pm - p.21                                                                                                 | Great Hall, Kent College<br>Sacconi Quartet<br>7.30pm - p.8                                                                                                 | Anselm Studio 1<br>CONTACT and New Music Ensemble<br>1.10pm - p.21<br>Great Hall, Kent College - Classico Latino with Omar Puente 7.30pm - p.9 | St Mildred's Church<br>Canterbury Gregorian Music Society<br>1pm - p.9                                  |
| Walks                                       | Houses and Churches of the Nailbourne Valley from Bridge to Bekesbourne<br>10am - p.43<br>The Village of Bridge<br>2pm - p.43<br>Gruesome Canterbury Tales Walk 2pm - p.43 | An Armchair Tour of Historic Tankerton & Whitstable<br>2pm - p.43 | St Martin's & Beyond<br>9.45am - p.43<br>Explore St Dunstan's<br>10am - p.44<br>A Day in the Life of a Monk<br>2pm - p.44 | Blitzed Bits<br>10am - p.44<br>The Roof Lines of Canterbury<br>10am - p.44<br>Exploring King's School<br>2pm - p.44 | Goodnestone & Chillenden-Walk in the Steps of Jane Austen<br>10am - p.44<br>Canterbury's Medieval Friaries 10am - p.44<br>The Old Dover Road & the Cricket Ground<br>2pm - p.44 | Women of Canterbury<br>10am - p.44<br>The Stones of Reculver<br>2pm - p.44                                                                                  | A Walk in and about St Augustine's College<br>10am - p.44<br>Canterbury's Medieval Hospitals<br>2pm - p.44                                     | Chilham Area of Outstanding Natural Beauty<br>10am - p.44                                               |
|                                             | Key Music Performance Family Friendly Talks Science Walks                                                                                                                  |                                                                   |                                                                                                                           |                                                                                                                     |                                                                                                                                                                                 |                                                                                                                                                             |                                                                                                                                                |                                                                                                         |



| WEEK 2                                               | Sunday<br>27 Oct                                                                                                                                  | Monday<br>28 Oct                                                                                                                                                                                                   | Tuesday<br>29 Oct                                                                                                                                                                                                                           | Wednesday<br>30 Oct                                                                                                                           | Thursday<br>31 Oct                                                                                                                 | Friday<br>1 Nov                                                                                                                                                 | Saturday<br>2 Nov                                                                                                                                          |
|------------------------------------------------------|---------------------------------------------------------------------------------------------------------------------------------------------------|--------------------------------------------------------------------------------------------------------------------------------------------------------------------------------------------------------------------|---------------------------------------------------------------------------------------------------------------------------------------------------------------------------------------------------------------------------------------------|-----------------------------------------------------------------------------------------------------------------------------------------------|------------------------------------------------------------------------------------------------------------------------------------|-----------------------------------------------------------------------------------------------------------------------------------------------------------------|------------------------------------------------------------------------------------------------------------------------------------------------------------|
| Canterbury Cathedral                                 |                                                                                                                                                   |                                                                                                                                                                                                                    |                                                                                                                                                                                                                                             |                                                                                                                                               |                                                                                                                                    | <b>A Musical Tapestry</b><br>(Eastern Crypt)<br>7.30pm - p.17                                                                                                   | Tallis Scholars<br>(Nave) 7.30pm - p.19                                                                                                                    |
| Festival<br>Spiegeltent,<br>Canterbury<br>Coach Park | <b>Invicta Jazz</b><br>11am - p.14<br><b>Baby Loves Disco</b><br>2pm - p.38<br><b>Laughing Boy<br/>Comedy Club</b><br>7.30pm - p.25               |                                                                                                                                                                                                                    | <b>Kent College School<br/>Concert</b><br>1pm - p.20<br><b>The Dime Notes</b><br>8pm - p.16                                                                                                                                                 | <b>Canterbury<br/>Academy Concert</b><br>1pm - p.20<br><b>Bowjangles</b><br>Excalibow<br>7pm - p.16<br><b>Anoushka Lucas</b><br>9.30pm - p.17 | <b>Simon Langton<br/>Grammar School<br/>for Boys Concert</b><br>1pm - p.20<br><b>BIG Sous L'Arbre</b><br>Acoustik<br>8.30pm - p.17 | <b>Canterbury College<br/>Concert</b><br>1pm - p.20<br><b>Murder She<br/>Didn't Write</b><br>7pm - p.27<br><b>Big Orange Head</b><br>9.30pm - p.18              | <b>Play Music Primary<br/>Showcase</b><br>10.30am - p.20<br><b>Opera-lele</b><br>7pm - p.18<br><b>The 360 Band<br/>with Hamish Stuart</b><br>9.30pm - p.18 |
| St Mary's<br>Hall Studio<br>Theatre                  |                                                                                                                                                   |                                                                                                                                                                                                                    | <b>Outside the Box: A Live<br/>Show About Death</b><br>7.30pm - p.35                                                                                                                                                                        |                                                                                                                                               |                                                                                                                                    |                                                                                                                                                                 | <b>Where is Mrs<br/>Christie?</b><br>7.30pm - p.27                                                                                                         |
| St Gregory's<br>Centre for<br>Music                  |                                                                                                                                                   | <b>Canterbury Festival<br/>Maxwell Davies<br/>Memorial Prize</b><br>1.10pm - p.21<br><b>Bursary<br/>Competition Final</b><br>7.30pm - p.15                                                                         | <b>Beethoven and the<br/>Romantic Spirit</b><br>1.10pm - p.21                                                                                                                                                                               | <b>Top Voices &amp;<br/>University<br/>Big Band</b><br>1.10pm - p.21                                                                          | <b>Ravel, Chansons<br/>Madécasses &amp;<br/>other works</b><br>1.10pm - p.21                                                       |                                                                                                                                                                 |                                                                                                                                                            |
| Cathedral<br>Lodge                                   |                                                                                                                                                   | <b>Bettany Hughes:<br/>Istanbul</b><br>5.45pm - p.31                                                                                                                                                               | <b>Peter Hore: Lindell's List</b><br>5.45pm - p.32                                                                                                                                                                                          | <b>Howard Smith:<br/>Rupert The<br/>Anthropomorphic<br/>Bear</b><br>5.45pm - p.32                                                             | <b>Lars Tharp:<br/>Five Men<br/>Behaving Badly</b><br>5.45pm - p.32<br><b>Gina Rippon: The<br/>Gendered Brain</b><br>8pm - p.35    | <b>Andrew Lownie:<br/>The Mountbattens</b><br>5.45pm - p.32                                                                                                     |                                                                                                                                                            |
| Other venues                                         | <b>The Ballroom<br/>MIK Track Record<br/>Showcase</b><br>3pm - p.14<br><b>Colyer-Fergusson<br/>Canterbury Choral<br/>Society</b><br>7.30pm - p.15 |                                                                                                                                                                                                                    | <b>St Peters' Methodist<br/>Church - Snowdown<br/>Colliery Welfare Male<br/>Voice Choir</b> 7.30pm - p.15<br><b>Anselm Theatre<br/>MIK Comedy</b><br>8pm - p.26<br><b>Great Hall, Kent College -<br/>Guitar Conspiracy</b><br>7.30pm - p.16 | <b>Anselm Theatre<br/>MIK Dance</b><br>7.30pm - p.26<br>Great Hall,<br>Kent College<br><b>Chris Lintott</b><br>8pm - p.33                     | <b>Anselm Theatre<br/>MIK Theatre</b><br>7.30pm - p.26                                                                             | <b>Anselm Studio 1<br/>Dance @<br/>Canterbury: RE-MIX</b><br>1.10pm - p.21<br><br><b>The Marlowe<br/>Theatre<br/>Dada Masilo's<br/>Giselle</b><br>7.30pm - p.28 | <b>The Marlowe<br/>Theatre<br/>Dada Masilo's<br/>Giselle</b><br>7.30pm - p.28                                                                              |
| Walks                                                | <b>Victorian City:<br/>Splendour &amp;<br/>Squalor</b><br>2pm - p.44                                                                              | <b>A Walk Around<br/>Jewish Canterbury</b><br>10am - p.44<br><b>The River Bridges,<br/>Mills &amp; Waterways<br/>of Canterbury</b><br>10am - p.44<br><b>A Literary Tour of<br/>the King's School</b><br>2pm - p.44 | <b>Frontline Folkestone</b><br>10am - p.45                                                                                                                                                                                                  | <b>The Director's<br/>Walk</b><br>10am - p.45<br><b>Country,<br/>Churches &amp;<br/>Creeks around<br/>Faversham</b><br>10am - p.45            | <b>War Memorials<br/>of Canterbury</b><br>10am - p.45                                                                              | <b>Introductory<br/>Tour of the Dover<br/>Western Heights</b><br>10am - p.45                                                                                    | <b>'Strangers' in<br/>Canterbury</b><br>10am - p.45<br><b>Canterbury<br/>Rings Walk - An<br/>Introduction to<br/>the Middle Ring</b><br>10am - p.45        |
|                                                      | Key Music Performance Family Friendly Talks Science Walks                                                                                         |                                                                                                                                                                                                                    |                                                                                                                                                                                                                                             |                                                                                                                                               |                                                                                                                                    |                                                                                                                                                                 |                                                                                                                                                            |

# The Canterbury Auction Galleries

FINE ART AUCTIONEERS SINCE 1911

## YOUR LOCAL AUCTION HOUSE WITH A WORLDWIDE REPUTATION

PROUD TO BE HEADLINE SPONSORS OF CANTERBURY FESTIVAL  
AS PART OF OUR LARGER COMMITMENT TO THE ARTS IN KENT  
AND BEYOND OVER THE PAST TWENTY FIVE YEARS



GALLÉ FAIENCE HARE  
Sold for £2,000



JAPANESE CLOISONNÉ VASE  
Sold for £29,000



ARCHAIC CHINESE BRONZE 'YING'  
Sold for £410,000



VICTORIAN SILVER FROG BOX  
Sold for £7,200



EMPRESS JOSEPHINE PLAQUE  
Sold for £7,200

### DISCOVER HOW WE CAN HELP

**FREE** Valuation Mornings held every **Friday 10am to 1pm**

Home Visits for larger Collections across the County

Bi-Monthly Two Day Specialist Auctions of Fine  
Art & Antiques, Silver & Jewellery, Coins & Medals  
Objet d'Art, Clocks & Antique Furniture

**[thecanterburyauctiongalleries.com](http://thecanterburyauctiongalleries.com)**

### FOR A FULLY PROFESSIONAL, YET DISCREET SERVICE

Please contact one of our Directors  
**Tony Pratt** ASFAV, **Cliona Kilroy** MRICS  
or **David Parker** BSc (Hons)

40 Station Road West  
Canterbury  
Kent, CT2 8AN

Telephone: **01227 763337** email: [general@tcag.co.uk](mailto:general@tcag.co.uk)